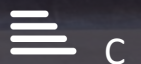




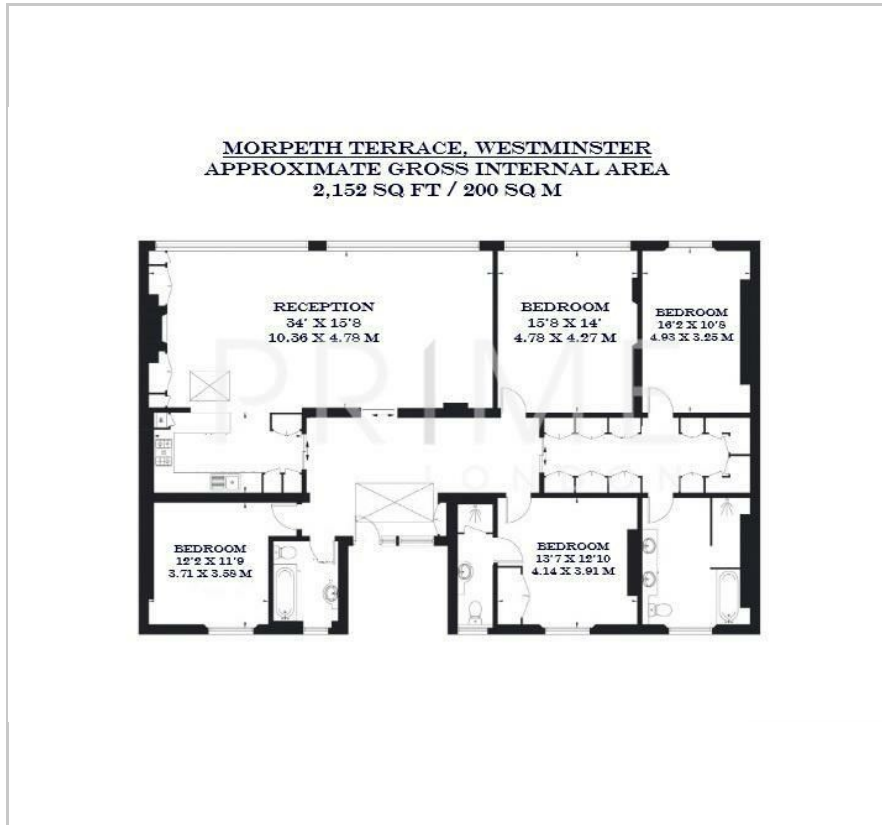
Morpeth Terrace

Westminster, London, SW1P 1EW

£2,650 Per Week



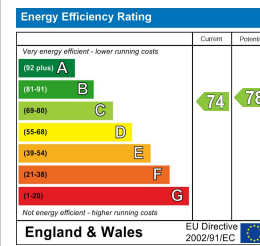
Floor Plan



Area Map



Energy Efficiency Graph



Viewing

By appointment. Contact us on 0207 052 1075 if you wish to arrange a viewing appointment for this property, or require further information.

- Four bedroom apartment
- 2,152 sq ft (200 sqm)
- Overlooking Westminster Cathedral
- Spacious walk-in wardrobe
- Underfloor heating and a cozy gas fireplace
- Few minutes' walk to Victoria station



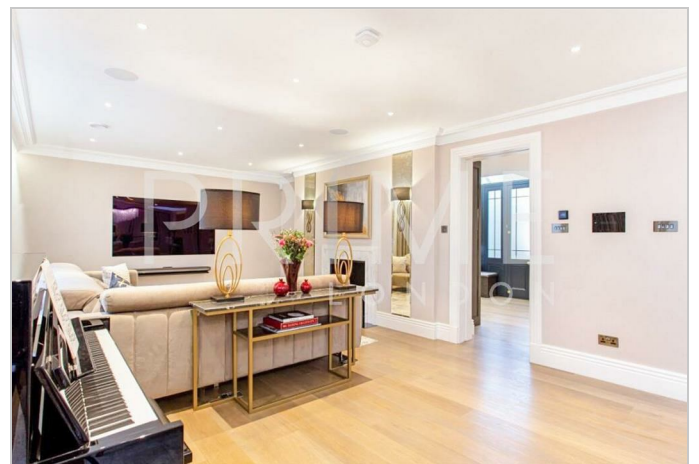
AVAILABLE NOW- This exquisite four bedroom apartment, situated in the heart of Westminster and overlooking the iconic Westminster Cathedral, is available for lease through Prime London.

Spanning approximately 2,152 sq ft (200 sqm), the property is designed for both comfort and grandeur. The expansive reception area features underfloor heating and a cozy gas fireplace to create an inviting ambiance. The open-plan kitchen is equipped with bespoke cabinetry and high-end Miele appliances, providing a seamless flow into the dining area for an effortless dining experience.

The property boasts four spacious bedrooms, each thoughtfully designed with ample storage and elegant finishes. The primary bedroom features a walk-in wardrobe and an en-suite bathroom, while the additional three bedrooms offer flexibility for guests, family, or a home office setup. Three beautifully appointed bathrooms add to the home's luxurious feel.

Perfectly located, this property offers unrivaled access to some of London's most famous landmarks, including Buckingham Palace, St. James's Park, and the Houses of Parliament, all within a short walking distance.

Victoria Station is just minutes away, providing easy access across London and beyond. The area is well-served by an array of fine dining, boutique shopping, and cultural experiences.



These particulars, whilst believed to be accurate are set out as a general outline only for guidance and do not constitute any part of an offer or contract. Intending purchasers should not rely on them as statements of representation of fact, but must satisfy themselves by inspection or otherwise as to their accuracy. No person in this firm's employment has the authority to make or give any representation or warranty in respect of the property.