



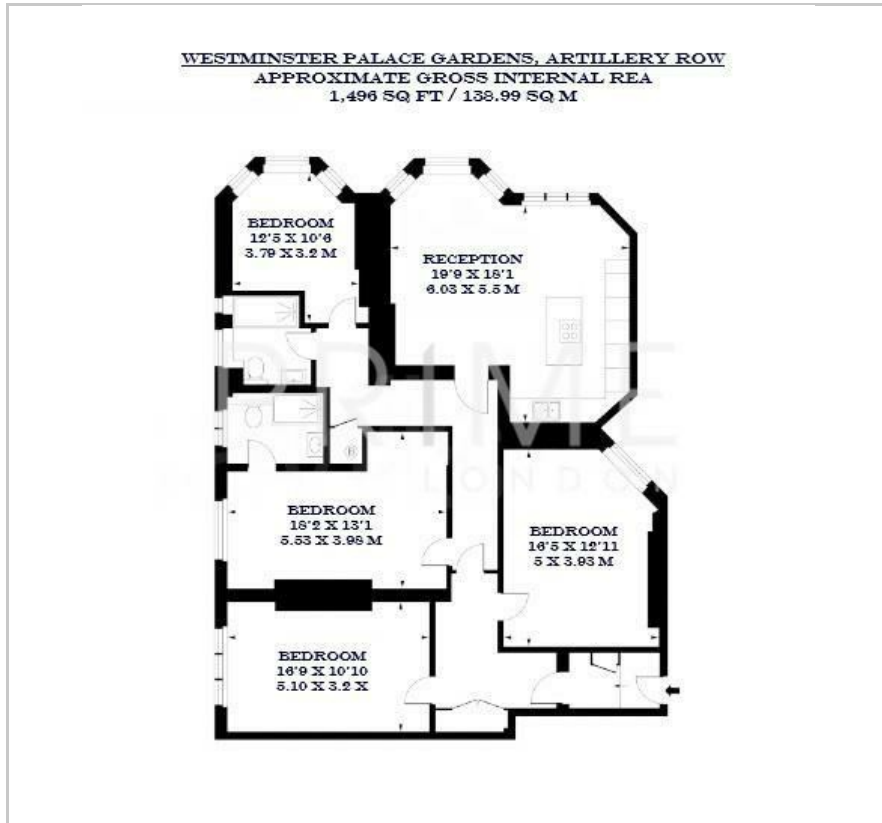
## Westminster Palace Gardens

Artillery Row, Westminster, SW1P 1RR

£1,269 Per Week



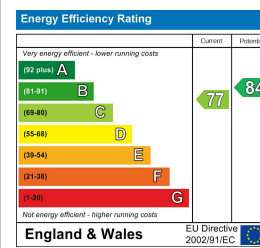
## Floor Plan



## Area Map



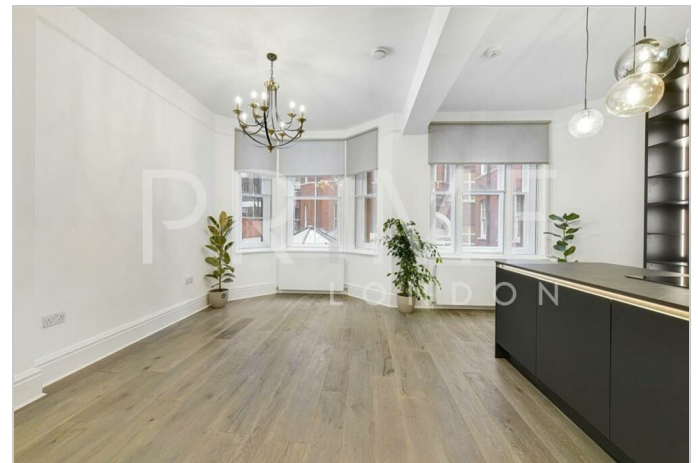
## Energy Efficiency Graph



## Viewing

By appointment. Contact us on 0207 052 1075 if you wish to arrange a viewing appointment for this property, or require further information.

- Four bedroom apartment
- Newly refurbished
- Close to the amenities of Victoria Street
- 1,496 sq ft (138.99 sqm)
- Spacious open plan reception area
- Great transportation connectivity

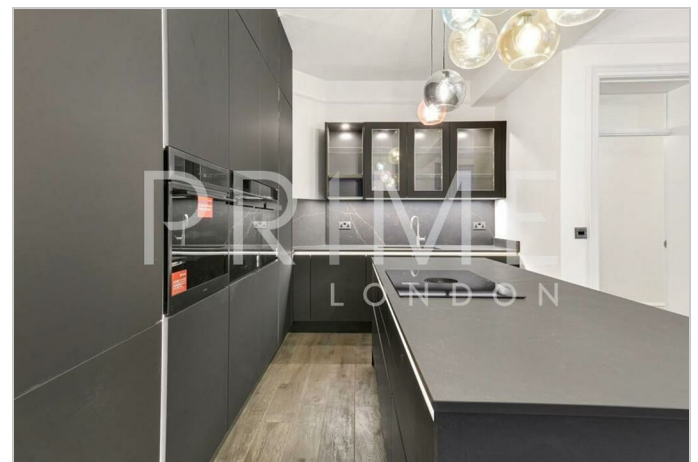


This exquisite four bedroom, newly refurbished apartment, located in the heart of Westminster, is available for lease through Prime London.

Totalling 1,496 sq ft (138.99 sqm), this property comprises four spacious double bedrooms, two luxurious bathrooms, and a brand-new, fully fitted kitchen flowing into an open-plan reception area. Alternatively, the layout can be comfortably reconfigured to feature three bedrooms and two reception rooms, offering flexibility to suit your lifestyle.

Westminster Palace Gardens is a striking period building set in the heart of Westminster, surrounded by some of London's most iconic landmarks. This prime location offers unrivaled access to the vibrant amenities, restaurants, and shops of Victoria, Westminster, St James's, and Mayfair.

For transportation, St. James's Park, Victoria and Westminster Stations are all under 0.5 miles away, offering abundant connectivity to the rest of London.



These particulars, whilst believed to be accurate are set out as a general outline only for guidance and do not constitute any part of an offer or contract. Intending purchasers should not rely on them as statements of representation of fact, but must satisfy themselves by inspection or otherwise as to their accuracy. No person in this firm's employment has the authority to make or give any representation or warranty in respect of the property.