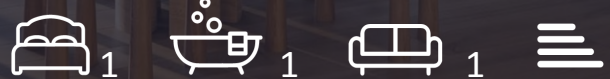


The Edit

Bear Lane, Southwark, SE1 0UH

Offers Over £917,500



Floor Plan



Area Map



Energy Efficiency Graph

Energy Efficiency Rating		Current	Potential
Very energy efficient - lower running costs			
(92 plus) A			
(81-91) B			
(69-80) C			
(55-68) D			
(39-54) E			
(21-38) F			
(1-20) G			
Not energy efficient - higher running costs			
England & Wales		EU Directive 2002/91/EC	

Viewing

By appointment. Contact us on 0207 928 6663 if you wish to arrange a viewing appointment for this property, or require further information.

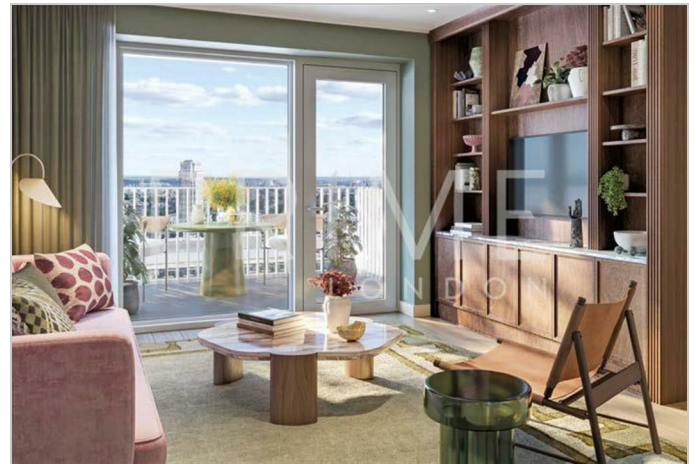
- Brand new One bedroom ▪ 568 sqft / 53 sqm apartment
- Private Balcony
- 24 hour concierge
- Residents' gym, sauna and ice bath
- Underfloor heating and comfort cooling
- No 9 Private Residents' Club and lounge
- Zone 1 travel links

Prime London is pleased to offer this brand new off-plan one-bedroom apartment in The Edit, featuring south-facing views.

This thoughtfully designed apartment maximizes space and natural light, providing a seamless flow throughout. The open-plan living and dining area is perfect for entertaining or relaxing, with direct access to a spacious private balcony that offers picturesque views of the city skyline to the south. The modern kitchen is equipped with premium V-ZUG Swiss appliances, sleek cabinetry, and ample storage, catering to both functionality and style.

The bedroom is generously sized, featuring built-in wardrobes and access to a luxurious ensuite bathroom with contemporary finishes. Additional storage options are provided throughout the apartment, including a utility area for convenience.

Experience the best of London living at The Edit, a boutique development of just 95 exclusive residences in the vibrant South Bank, SE1. This prime location places you within walking distance of cultural landmarks such as the Tate Modern, Borough Market, and the River Thames, while also offering easy access to major transport links like Southwark and London Waterloo stations.



These particulars, whilst believed to be accurate are set out as a general outline only for guidance and do not constitute any part of an offer or contract. Intending purchasers should not rely on them as statements of representation of fact, but must satisfy themselves by inspection or otherwise as to their accuracy. No person in this firm's employment has the authority to make or give any representation or warranty in respect of the property.