



Chantrey House

4 Eccleston Street, Belgravia, SW1W 9LN

£900 Per Week



1



1

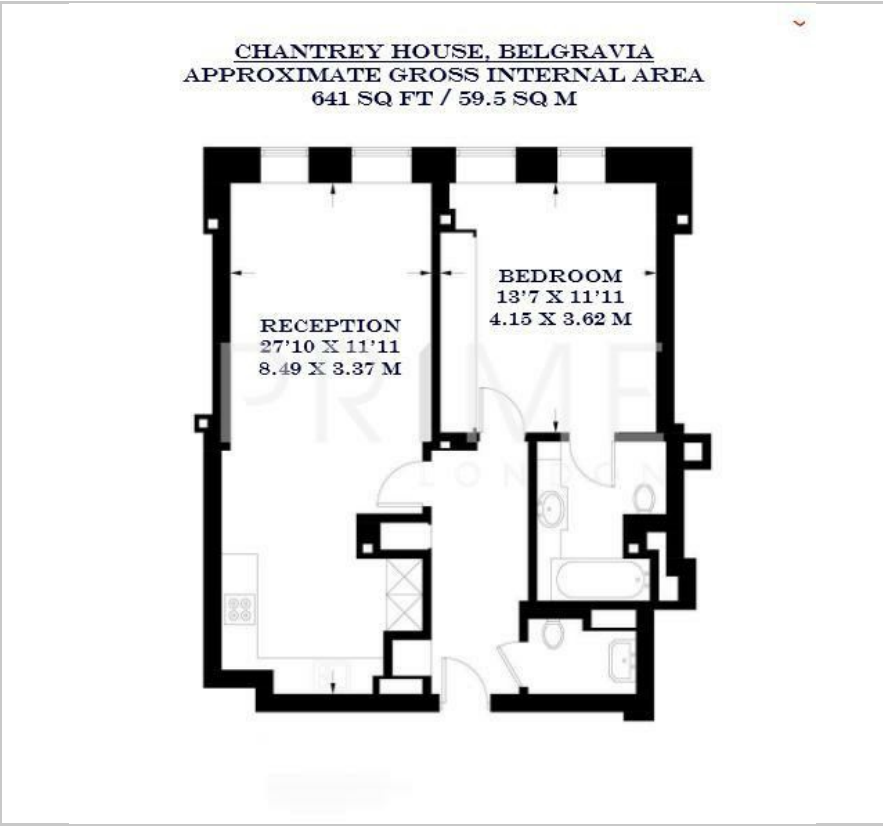


1



C

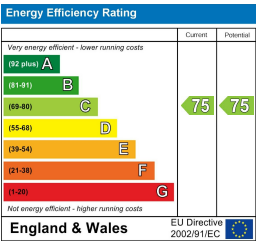
Floor Plan



Area Map



Energy Efficiency Graph



Viewing

By appointment. Contact us on 0207 052 1075 if you wish to arrange a viewing appointment for this property, or require further information.

- One bedroom apartment
- 641 sq ft (59.5 sqm)
- Heating and cooling systems
- Close to Belgravia's amenities
- Just 2 minutes to Victoria
- 24 hour concierge Station



This beautifully bright and spacious one-bedroom apartment, positioned within the refined, Grade II-listed Edwardian building of Chantrey House, is available for lease through Prime London.

Offering a generous 641 sq ft (59.5 sqm) of living space, the apartment is thoughtfully designed for both comfort and style. The full kitchen and dining area are equipped to a high standard, seamlessly flowing into a large reception room. The bedroom is generously sized and features an en-suite bathroom complete with both a bath and shower.

Further enhancing this luxurious residence is a bespoke Crestron control system, heating and cooling, lighting, and automated blinds—all accessible via touch panels, elegant cameo keypads, or an iPad interface for added convenience.

Residents of Chantrey House benefit from a 24 hour concierge service.

Positioned approximately 0.2 miles from Victoria Station, the property enjoys excellent transport links, adding to its prime central London appeal.



These particulars, whilst believed to be accurate are set out as a general outline only for guidance and do not constitute any part of an offer or contract. Intending purchasers should not rely on them as statements of representation of fact, but must satisfy themselves by inspection or otherwise as to their accuracy. No person in this firm's employment has the authority to make or give any representation or warranty in respect of the property.