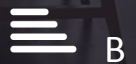
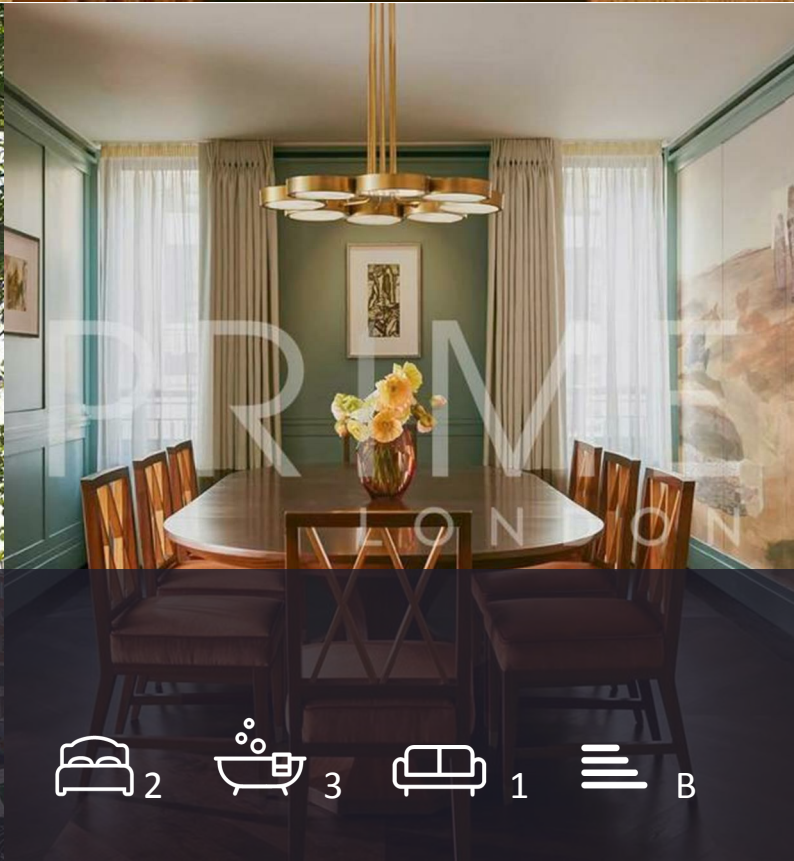




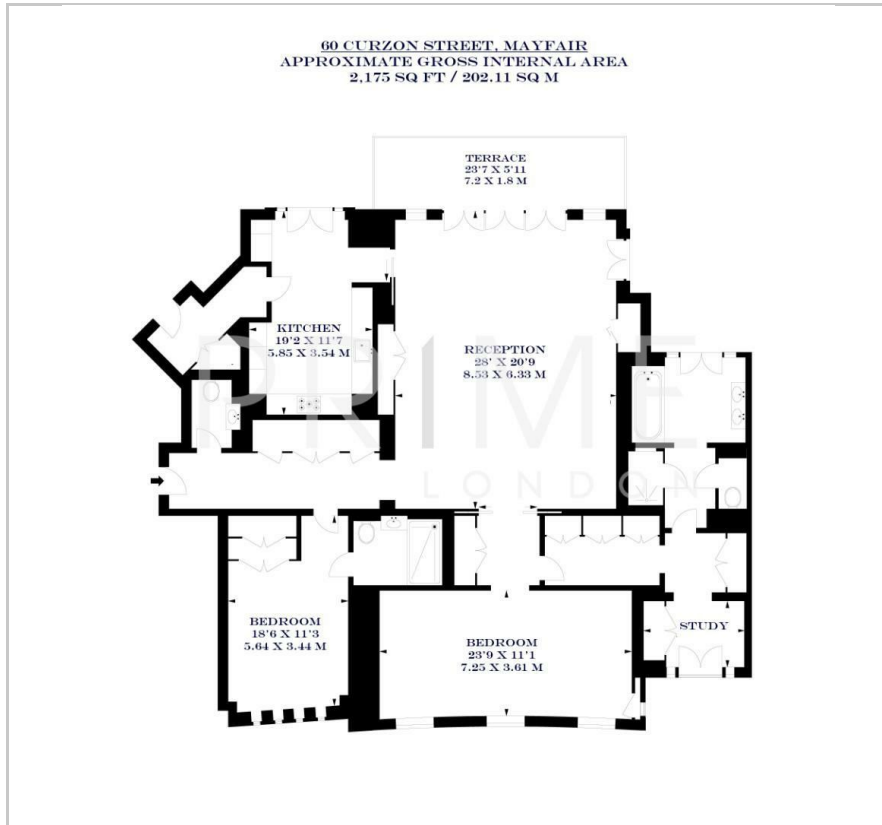
Curzon Street

Mayfair, London, W1J 8PG

Guide Price £15,000,000



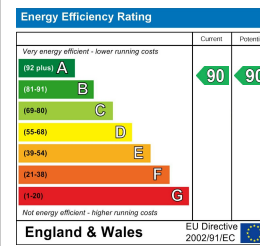
Floor Plan



Area Map



Energy Efficiency Graph



Viewing

By appointment. Contact us on 0207 052 1075 if you wish to arrange a viewing appointment for this property, or require further information.

- Limited collection of 32 boutique residences
- Beautiful courtyard gardens
- An exceptional range of world-class facilities
- 1, 2 and 3 bedroom apartments
- Short walk to Green Park and Hyde Park
- 24 hour concierge and security presence

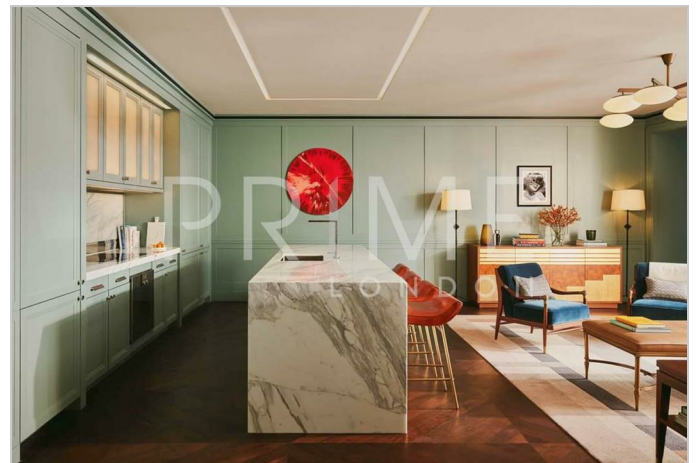
Presenting 60 Curzon – a limited collection of 1, 2 and 3 bedroom, 32 boutique residences that set a new standard for luxury living in the heart of Mayfair, available for sale through Prime London.

These prestigious homes result from an extraordinary collaboration between acclaimed architect Lee Polisano of PLP Architecture and the renowned design team at The Office of Thierry W. Despont.

Spanning 2,175 square feet, this residence offers a chic living area or enjoy intimate dinners in the refined dining room. The highlight of this exquisite home is the expansive 700 sq. ft. private roof terrace offering a serene space for al fresco dining and sunlit lounging, with views over the peaceful communal courtyard below. Featuring two spacious bedrooms and three opulent bathrooms, this home is crafted for both relaxation and entertainment.

Offering an exceptional range of facilities, this development includes a 24-hour concierge service and security presence. For wellness and relaxation, residents have access to a state-of-the-art gym, luxurious sauna, steam room, and an impressive 20-metre swimming pool alongside a vitality pool and private treatment rooms. Beautiful courtyard gardens provide a serene escape, while the exclusive club lounge offers an elegant space for socializing.

Located at the heart of Mayfair this address offers an unrivaled combination of privacy and prime access to the city's most desirable destinations. Just a brief walk away are the expansive Green Park and Hyde Park, two of London's celebrated Royal Parks, allowing for tranquil escapes in nature.



These particulars, whilst believed to be accurate are set out as a general outline only for guidance and do not constitute any part of an offer or contract. Intending purchasers should not rely on them as statements of representation of fact, but must satisfy themselves by inspection or otherwise as to their accuracy. No person in this firm's employment has the authority to make or give any representation or warranty in respect of the property.