

Four Riverlight Quay

Nine Elms, SW8 5AU

£2,000 Per Week



3



3

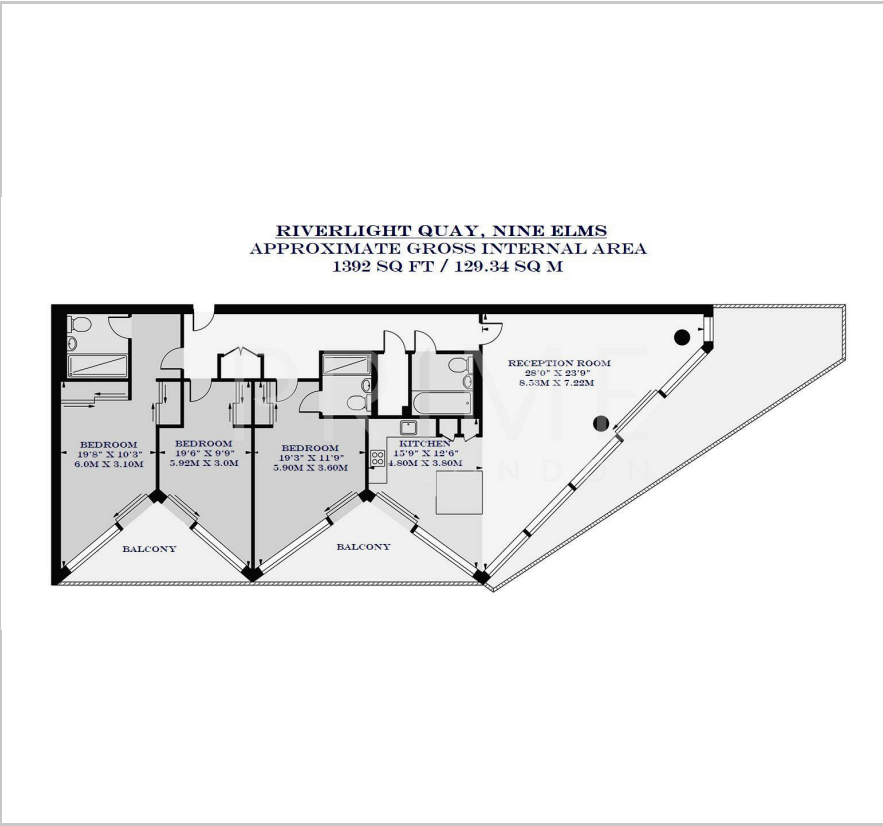


1



B

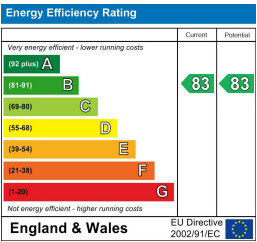
Floor Plan



Area Map



Energy Efficiency Graph



Viewing

By appointment. Contact us on 0207 928 6663 if you wish to arrange a viewing appointment for this property, or require further information.

- Penthouse - three bedroom ■ Secure underground parking apartment
- Views of the River Thames ■ 1,392 sq ft / 129.34 sq m
- On-site leisure and resident's ■ 24 hour concierge facilities



Penthouse apartment. This extremely generous three bedroom apartment of 1,392 sq ft / 129.34 sq m with three balconies within Three Riverlight Quay, is available to rent through Prime London. The property also comes with a secure underground parking space.

This spacious lateral property offers sizeable reception with open-plan kitchen and double height ceiling, three double bedrooms (two with en suite), secure parking, high specification level throughout, comfort cooling and under floor heating. The property also offers great views of the River Thames and Battersea Powerstation, offering a truely great outlook during both the day and night.

An exclusive on-site residents Clubhouse offers a unique third space between home and work which to socialise, exercise and be entertained, from a private screening room to virtual golf facilities; a residents club lounge and library and a 15m swimming pool, state-of-the-art gymnasium and spa. Riverlight offers a vibrant mix of leisure and retail facilities at street level, including cafés, bar and restaurant and a crèche.



These particulars, whilst believed to be accurate are set out as a general outline only for guidance and do not constitute any part of an offer or contract. Intending purchasers should not rely on them as statements of representation of fact, but must satisfy themselves by inspection or otherwise as to their accuracy. No person in this firms employment has the authority to make or give any representation or warranty in respect of the property.