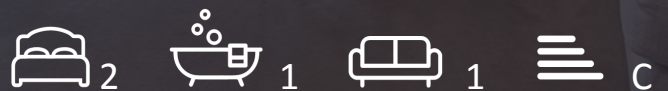


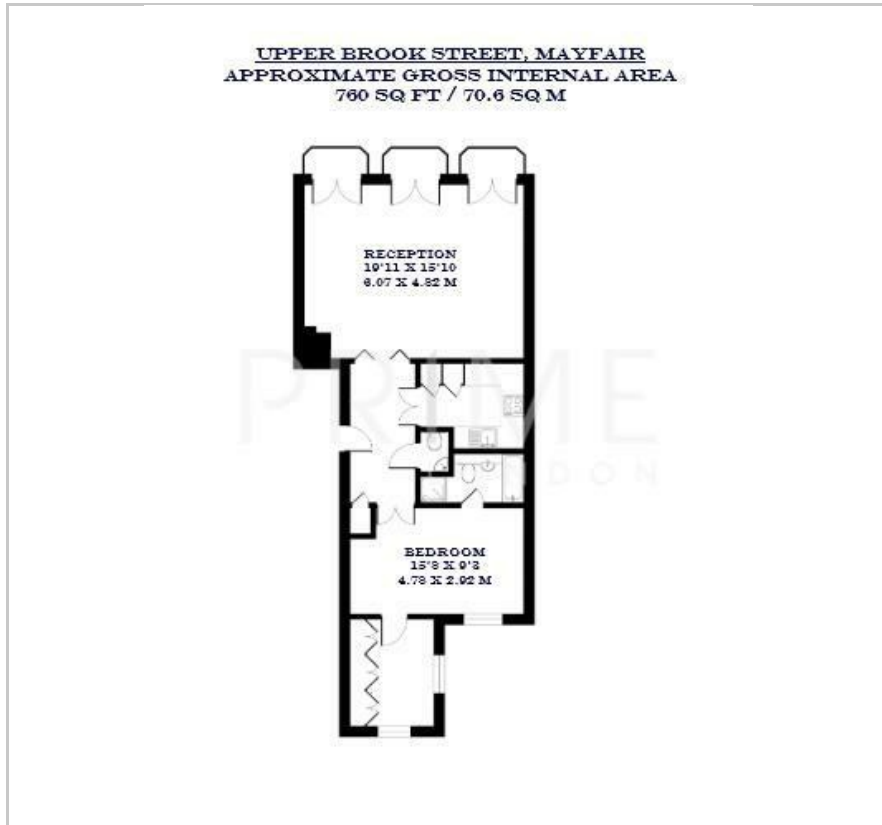
16 Upper Brook Street

Mayfair, London, W1K 7PT

£1,700 Per Week



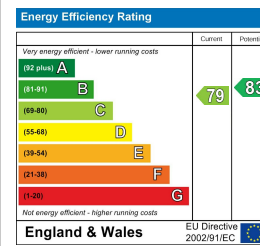
## Floor Plan



## Area Map



## Energy Efficiency Graph



## Viewing

By appointment. Contact us on 0207 052 1075 if you wish to arrange a viewing appointment for this property, or require further information.

- One bedroom apartment
- 760 sq ft (70.6 sqm)
- Located in the luxurious Mayfair district
- Juliette balcony
- Walk-in wardrobe and en-suite bathroom
- Walking distance to Marble Arch and Bond Street

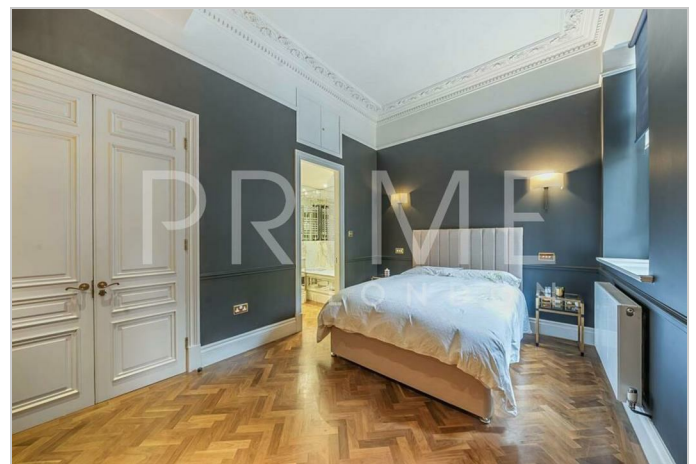
This stunning one bedroom apartment, located just off Park Lane, is available for lease through Prime London.

Totalling 760 sq ft (70.6 sqm), the property boasts a spacious and well-proportioned interior. The open-plan living area provides a bright and inviting atmosphere, with large windows that flood the space with natural light.

The property features one bedroom with an en-suite bathroom, as well as a separate W/C. The highlight of this flat is the luxurious walk-in wardrobe, offering ample storage space and adding an extra touch of convenience and comfort to the home.

Located on Brook Street, the flat is ideally positioned within close proximity to an array of world-class amenities, including high-end boutiques, restaurants, and cafes. Oxford Street is just moments away, while the West End, with its renowned theatres, is also within easy reach.

For transport, Marble Arch and Bond Street stations both within walking distance, providing access to the Central and Jubilee lines.



These particulars, whilst believed to be accurate are set out as a general outline only for guidance and do not constitute any part of an offer or contract. Intending purchasers should not rely on them as statements of representation of fact, but must satisfy themselves by inspection or otherwise as to their accuracy. No person in this firm's employment has the authority to make or give any representation or warranty in respect of the property.