



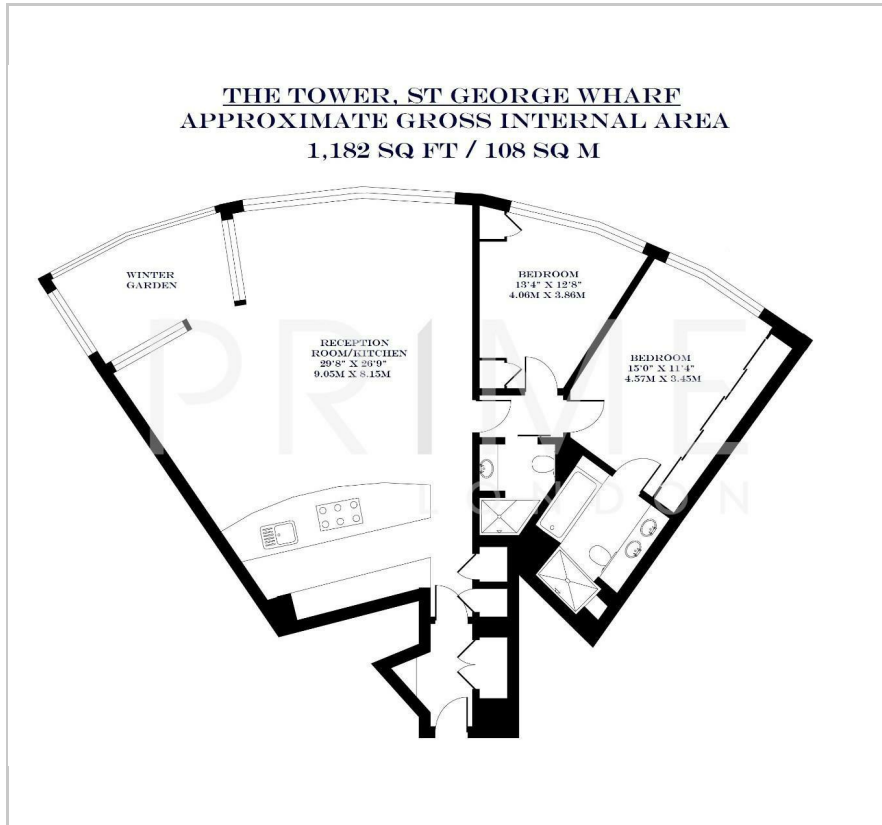
The Tower

St George Wharf, SW8 2DA

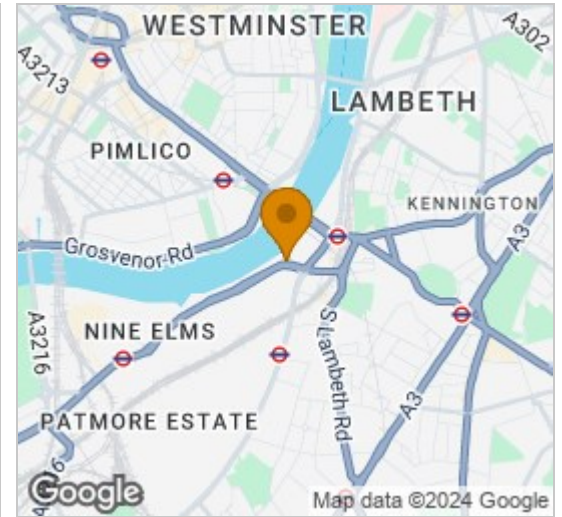
Asking Price £1,500,000



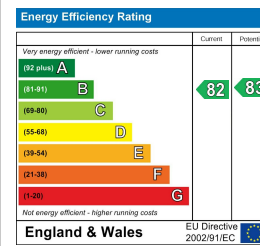
Floor Plan



Area Map



Energy Efficiency Graph



Viewing

By appointment. Contact us on 0207 928 6663 if you wish to arrange a viewing appointment for this property, or require further information.

- Modern two bedroom ▪ 1,182 sq ft (108 sqm) apartment
- Upgraded and well kept ▪ Huge floor to ceiling windows
- Front door concierge service ▪ Gym, Pool and Sauna with valet parking

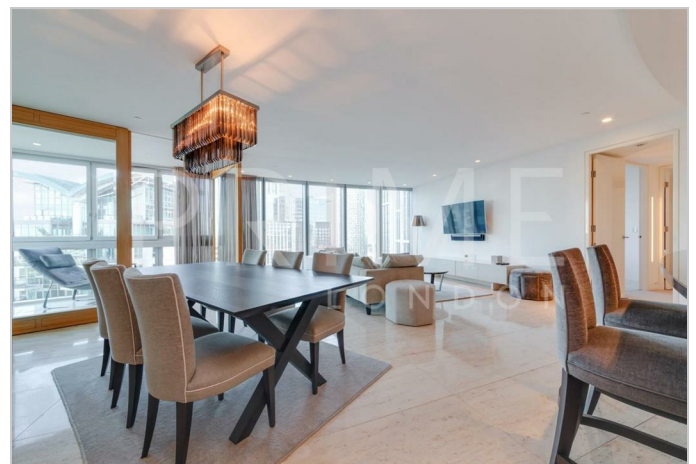
With an excellent panorama and extensive lateral space totalling some 1,182 sq ft (108 sqm), this upgraded and luxurious two bedroom apartment is available for chain free sale through Prime London.

The hand picked furniture is also available through separate negotiation.

The apartment offers a fully integrated and updated kitchen with Miele appliances, high specification bathrooms with exquisite tiling and fittings, comfort cooling, touch panel controls, recessed lighting and automated winter garden.

Amenities at The Tower include front door concierge service with valet parking, first floor gym, pool and sauna facilities as well as a private cinema.

St George Wharf offers on site riverside bars and restaurants such as Waterfront London, The Riverside, Four Degree and Pop Art Sushi. For additional convenience other on site outlets include Tesco Express, Pret a Manger, Hudson's Dry Cleaners, Riverside Medical Centre, Dental Spa and more.



These particulars, whilst believed to be accurate are set out as a general outline only for guidance and do not constitute any part of an offer or contract. Intending purchasers should not rely on them as statements of representation of fact, but must satisfy themselves by inspection or otherwise as to their accuracy. No person in this firm's employment has the authority to make or give any representation or warranty in respect of the property.