



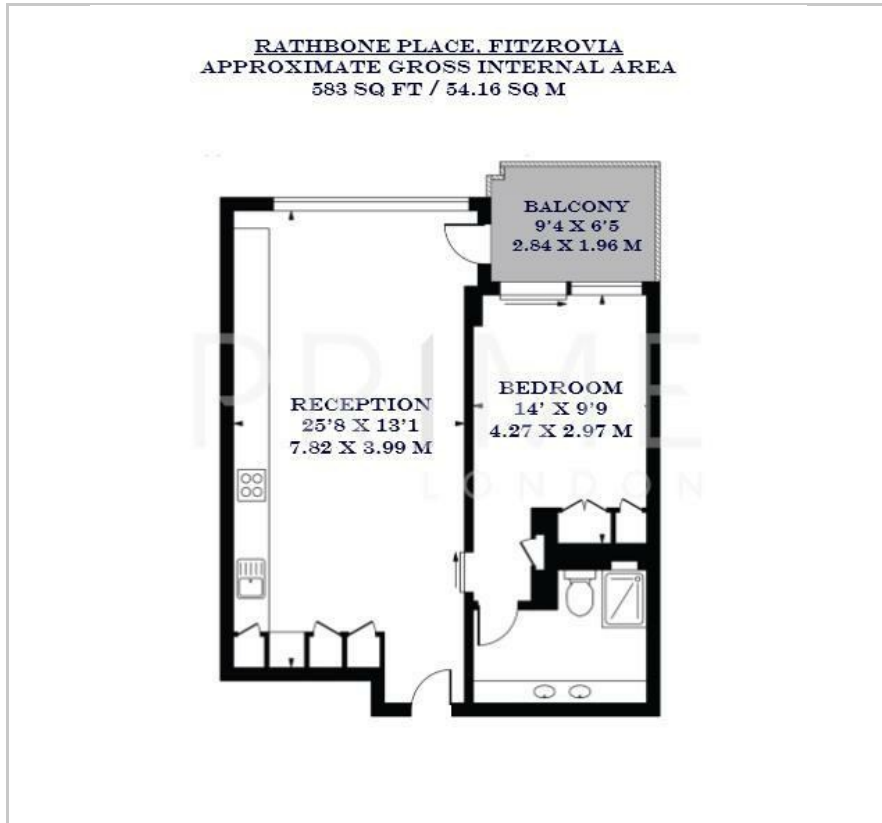
37 Rathbone Place

Rathbone Square, Fitzrovia, W1T 1JN

£1,100 Per Week



Floor Plan



Area Map



Energy Efficiency Graph



Viewing

By appointment. Contact us on 0207 052 1075 if you wish to arrange a viewing appointment for this property, or require further information.

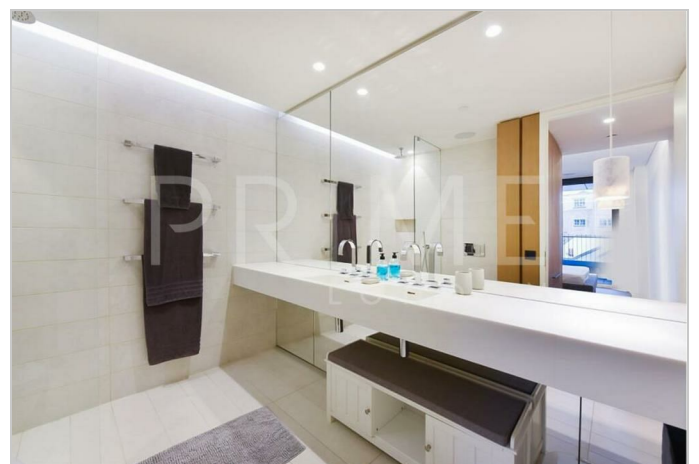
- One bedroom apartment
- 583 sq ft (54.16 sqm)
- Private balcony
- Centrally located in Fitzrovia
- Residents' pool, spa, gym and cinema room
- 24 hour concierge

This exceptional one bedroom apartment in the prestigious Rathbone Place, Soho, is offered for lease through Prime London.

Spanning 583 sq ft (54.16 sqm), the property boasts a spacious open-plan reception room with a fully fitted kitchen opening onto a private balcony. The large double bedroom features its' own en-suite bathroom, as well as built-in wardrobes.

Residents of Rathbone Place enjoy exclusive access to a wealth of premium amenities, including a 24-hour concierge, beautifully landscaped gardens, a state-of-the-art gym, a swimming pool, sauna, steam room, screening room, lounge, and a wine storage and tasting room. Rathbone Square offers a peaceful retreat while being just steps away from the bustling Oxford Street.

Situated in the heart of London's West End, this apartment provides unmatched connectivity with transport links across the city. Both the City and West London are just 10 minutes away via the underground, making it an ideal location for work and leisure alike.



These particulars, whilst believed to be accurate are set out as a general outline only for guidance and do not constitute any part of an offer or contract. Intending purchasers should not rely on them as statements of representation of fact, but must satisfy themselves by inspection or otherwise as to their accuracy. No person in this firm's employment has the authority to make or give any representation or warranty in respect of the property.