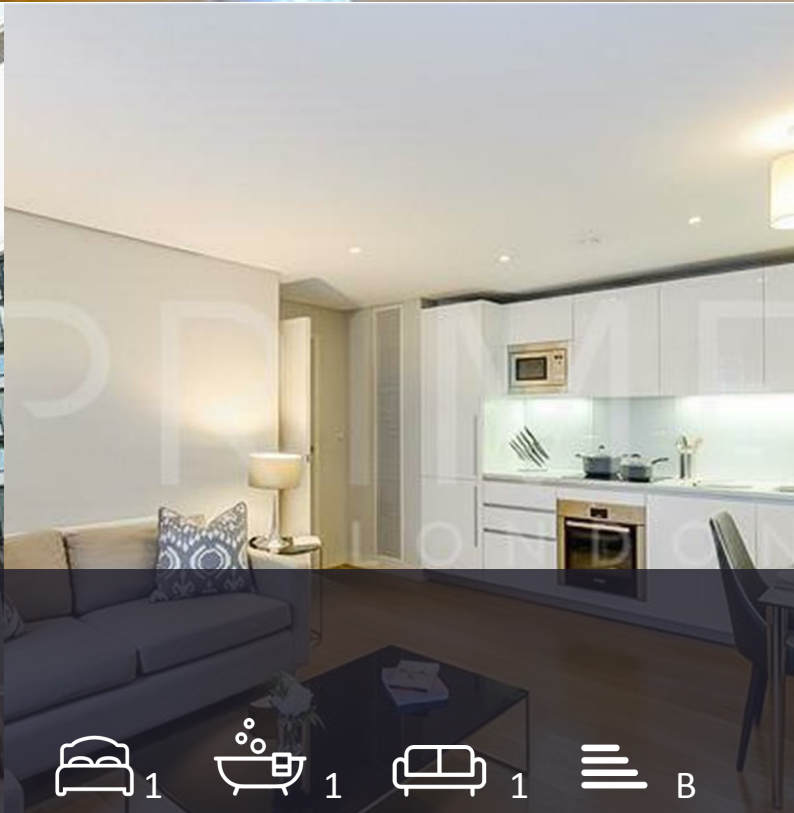




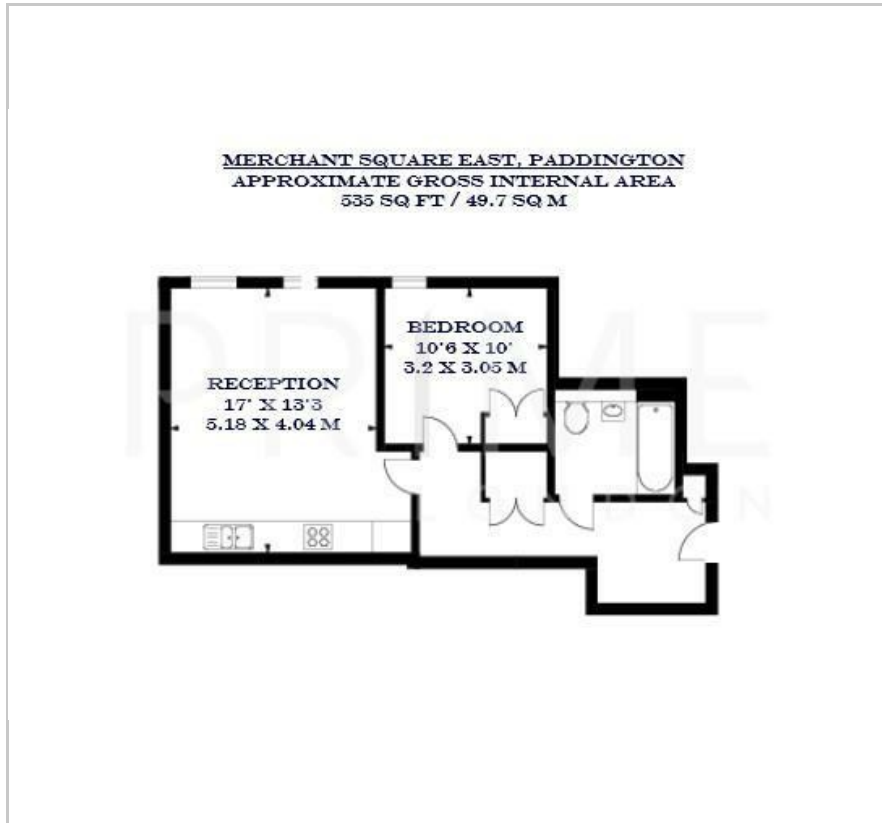
4 Merchant Square East

Paddington, London, W2 1AN

£760 Per Week



Floor Plan



Area Map



Energy Efficiency Graph



Viewing

By appointment. Contact us on 0207 052 1075 if you wish to arrange a viewing appointment for this property, or require further information.

- One bedroom apartment
- Fully furnished
- Central Paddington location
- 535 sq ft (49.7 sqm)
- Sleek and modern kitchen
- 24 hour concierge



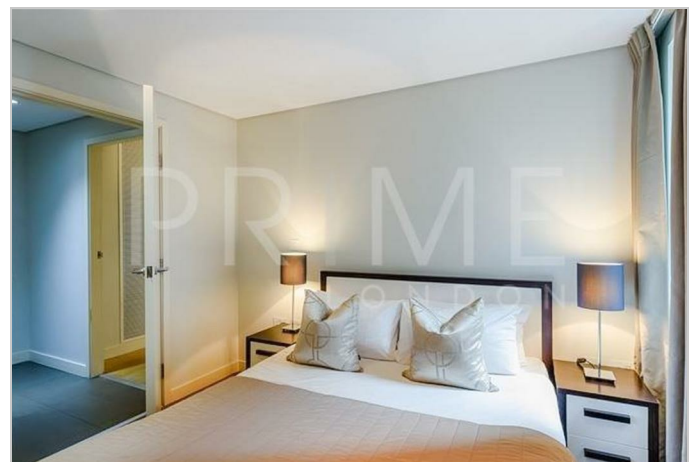
This beautifully presented one bedroom apartment, located in the popular Merchant Square development, is available for lease through Prime London.

Offering 535 sq ft (49.7 sqm) of living space, the property boasts spacious interiors with elegant wooden flooring and high-specification fixtures and furnishings throughout.

The apartment features a bright and contemporary open-plan reception and dining area, complemented by a sleek modern kitchen with integrated appliances. The principal bedroom is well proportioned and offers generous storage.

Nestled in a stunning waterside location in Paddington, Merchant Square provides the perfect balance of tranquility and accessibility in the heart of Central London. Residents also benefit from a concierge.

Residents can enjoy world-class shopping, theaters, and restaurants of the West End just moments away. The property is ideally positioned for excellent transport links, including Paddington Mainline and Underground Station. For international travel, Heathrow Airport is a mere 20 minutes away via the convenient Heathrow Express.



These particulars, whilst believed to be accurate are set out as a general outline only for guidance and do not constitute any part of an offer or contract. Intending purchasers should not rely on them as statements of representation of fact, but must satisfy themselves by inspection or otherwise as to their accuracy. No person in this firm's employment has the authority to make or give any representation or warranty in respect of the property.