



Lincoln Apartments

Fountain Park Way, White City Living, W12 7LF

£3,392 Per Week



4



4

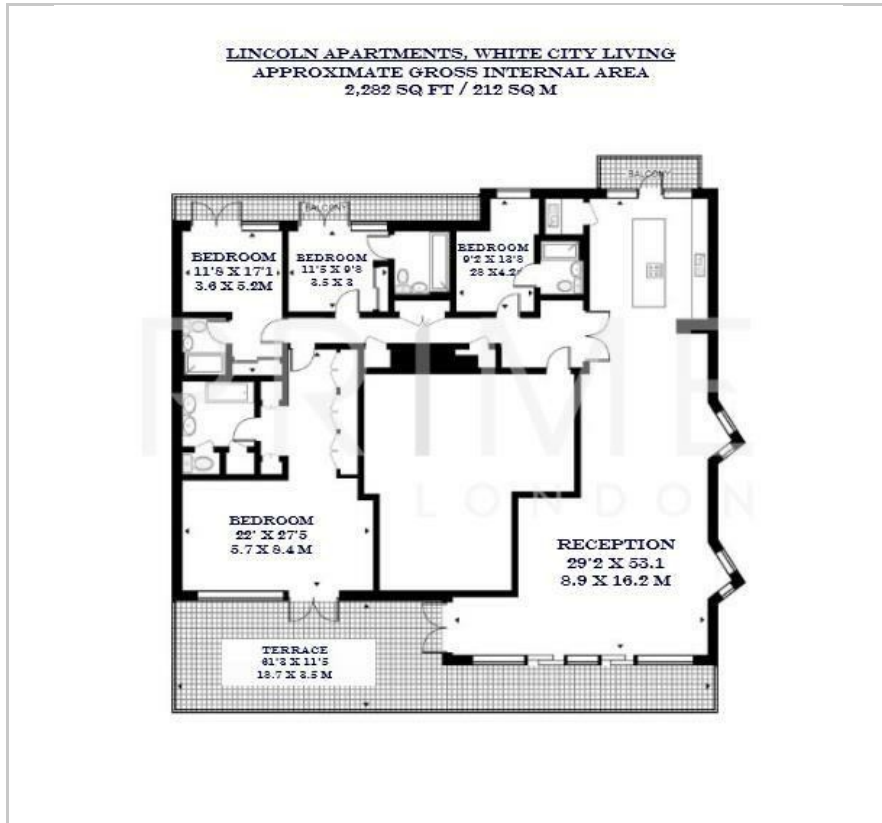


1



B

Floor Plan



Area Map



Energy Efficiency Graph



Viewing

By appointment. Contact us on 0207 052 1075 if you wish to arrange a viewing appointment for this property, or require further information.

- Four bedroom penthouse ■ 2,282 sq ft (212 sq m) apartment
- Private 705 sq. ft. south-facing terrace ■ Residents' gym, pool, cinema, and landscaped gardens
- Located moments away from Westfield London ■ 24 hour concierge

This stunning four-bedroom penthouse apartment, located in the popular White City Living in the heart of West London, is available for lease through Prime London.

Spanning across 2,282 sq ft and offering breathtaking dual-aspect views of London, the property offers an open-plan living and dining area, seamlessly integrated with a sleek contemporary kitchen, featuring a stylish island and premium integrated appliances.

Each of the four generously sized bedrooms boasts its own luxurious en-suite bathroom, ensuring privacy and comfort. Bedrooms 2 and 3 enjoy direct access to a balcony, offering personal spaces with stunning views. The standout feature of the penthouse is the private 705 sq. ft. south-facing terrace, perfect for relaxation or entertainment.

The property also includes two dedicated parking spaces.

Residents of White City Living benefit from exclusive amenities, including a private gym, swimming pool, cinema, and beautifully landscaped gardens.

The property benefits from excellent transport links, including just a 12-minute journey to Bond Street, and being next to Westfield London—Europe's largest shopping centre—this development offers unparalleled access to luxury shopping and exceptional dining.



These particulars, whilst believed to be accurate are set out as a general outline only for guidance and do not constitute any part of an offer or contract. Intending purchasers should not rely on them as statements of representation of fact, but must satisfy themselves by inspection or otherwise as to their accuracy. No person in this firm's employment has the authority to make or give any representation or warranty in respect of the property.