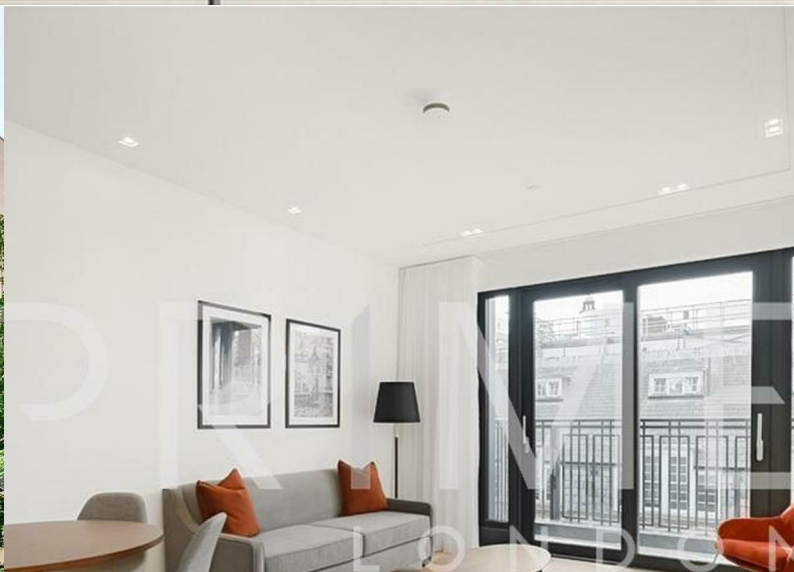


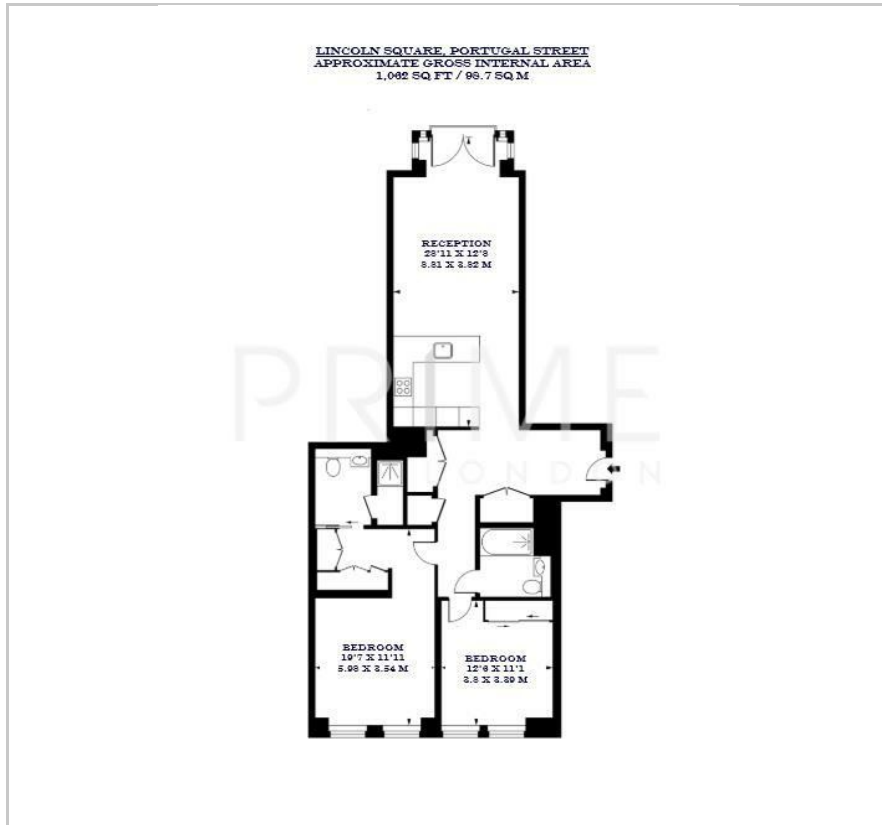
## Lincoln Square

18 Portugal Street, London, WC2A 2AT

£1,300 Per Week



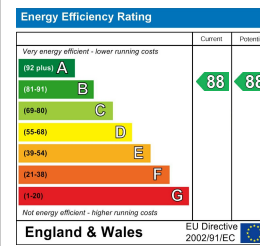
## Floor Plan



## Area Map



## Energy Efficiency Graph



## Viewing

By appointment. Contact us on 0207 052 1075 if you wish to arrange a viewing appointment for this property, or require further information.

- Exceptional two bedroom ▪ 1,062 sq ft (96.7 sqm) apartment
- Master bedroom featuring ▪ Residents' pool, gym and walk-in wardrobe  
▪ cinema room
- Within walking distance to ▪ 24 hour concierge  
Covent Garden

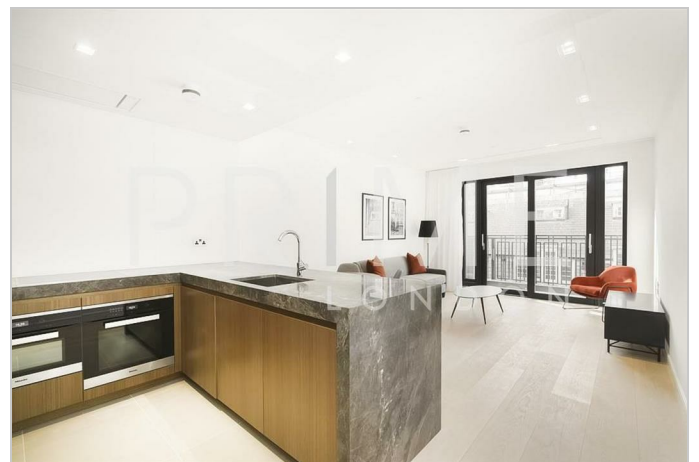
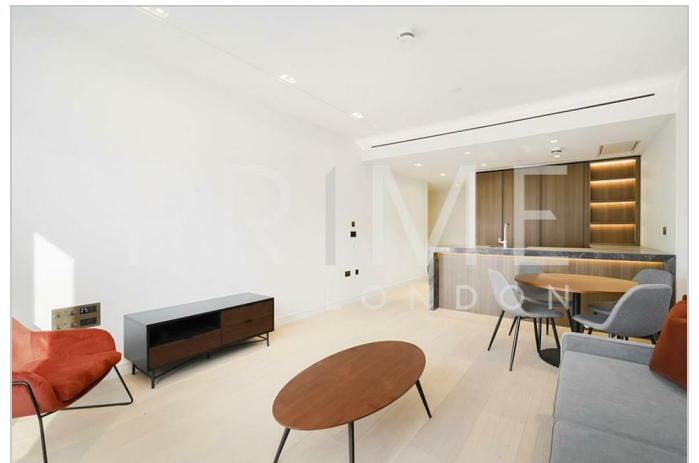
This exceptional two-bedroom apartment, located within the prestigious Lincoln Square development, is available for lease through Prime London.

The property spans across 1,062 sq ft (96.7 sqm) and features an open-plan living and dining area enhanced by high ceilings, expansive windows, and premium finishes, creating a bright and inviting atmosphere. The state-of-the-art kitchen is equipped with top-of-the-line appliances, sleek cabinetry, and ample counter space.

Both bedrooms are generously proportioned and include built-in wardrobes for seamless storage. The master suite benefits from a beautifully designed en-suite bathroom featuring luxurious fixtures and finishes.

Residents of Lincoln Square enjoy an array of exceptional amenities, including a 24-hour concierge, top-level security, and beautifully landscaped gardens. In addition, the development boasts 17,000 square feet of exclusive facilities including a gym, pool and cinema room.

Perfectly positioned, the apartment is just a short stroll from some of London's most iconic landmarks and cultural attractions. Lincoln's Inn Fields is only moments away, while Holborn Tube Station provides excellent transport links within minutes. Covent Garden, with its vibrant atmosphere and world-class dining, is within easy reach. \*\*Photos of a similar property for illustration purposes only\*\*



These particulars, whilst believed to be accurate are set out as a general outline only for guidance and do not constitute any part of an offer or contract. Intending purchasers should not rely on them as statements of representation of fact, but must satisfy themselves by inspection or otherwise as to their accuracy. No person in this firm's employment has the authority to make or give any representation or warranty in respect of the property.