



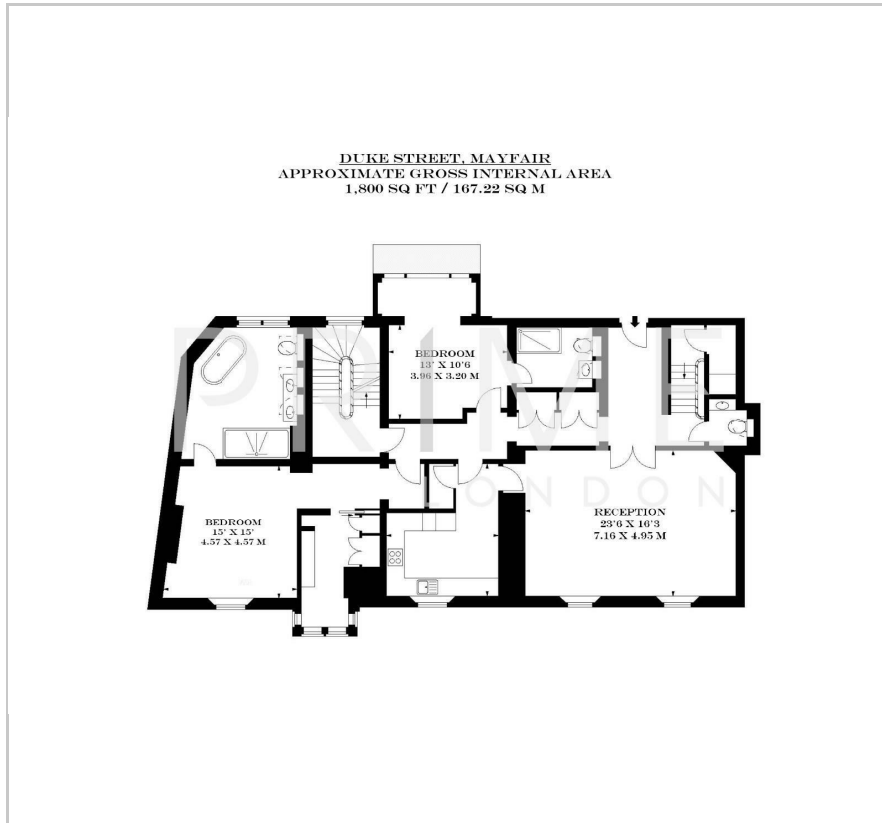
65 Duke Street

Mayfair, London, W1K 5NX

£3,700 Per Week



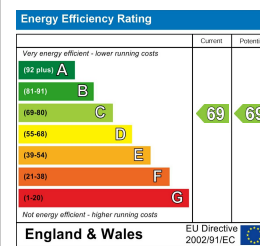
Floor Plan



Area Map



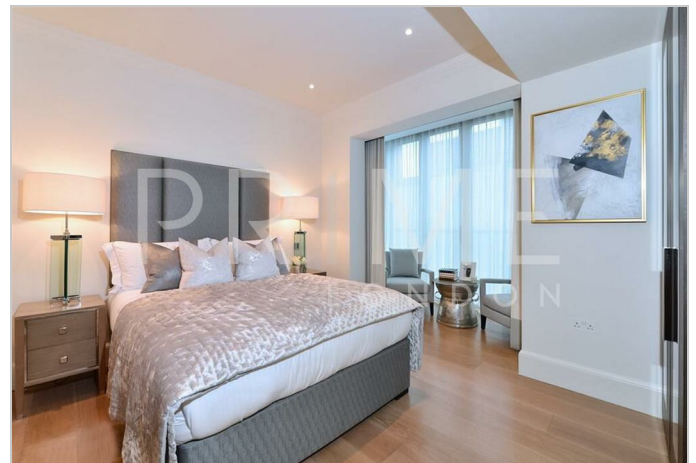
Energy Efficiency Graph



Viewing

By appointment. Contact us on 0207 052 1075 if you wish to arrange a viewing appointment for this property, or require further information.

- Two bedroom apartment
- Located in the heart of Mayfair
- Moments away from Hyde Park
- 1,800 sq ft (167.22 sqm)
- Exceptional furniture throughout
- Short walk to Bond Street and Marble Arch stations

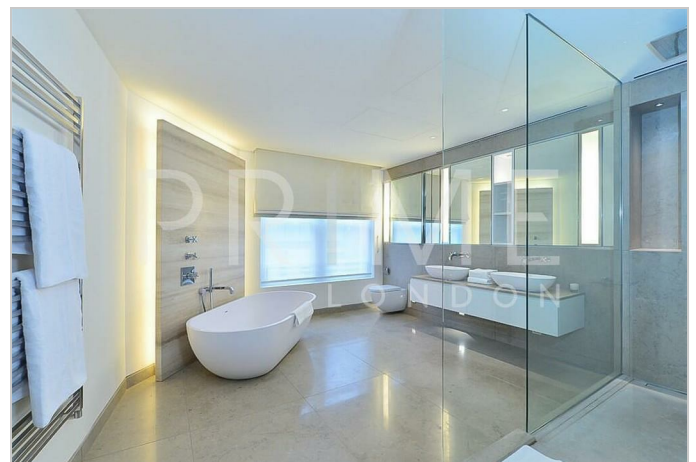


This luxurious apartment, set within a magnificent Grade II listed residence on chic Duke Street, Mayfair, is available for lease through Prime London.

Spanning across 1,800 sq ft (167.22 sqm), the property boasts an expansive living space with ample space for dining, as well as a separate, fully integrated kitchen with natural oak flooring. Additionally, two spacious double bedrooms, each featuring beautifully appointed en-suite bathrooms, as well as an additional study, ideal for home working or flexible living.

Situated in the heart of Mayfair, this property offers unparalleled access to London's finest amenities. Duke Street is renowned for its proximity to world-class shopping on Bond Street, Michelin-starred dining, and vibrant cultural landmarks. The property is just moments from Hyde Park and Grosvenor Square, providing a serene retreat amidst the city's hustle and bustle.

For transportation, Bond Street station (Elizabeth and Central lines) and Marble Arch station (Central line) are both within a short walk, ensuring seamless connectivity to the rest of London.



These particulars, whilst believed to be accurate are set out as a general outline only for guidance and do not constitute any part of an offer or contract. Intending purchasers should not rely on them as statements of representation of fact, but must satisfy themselves by inspection or otherwise as to their accuracy. No person in this firm's employment has the authority to make or give any representation or warranty in respect of the property.