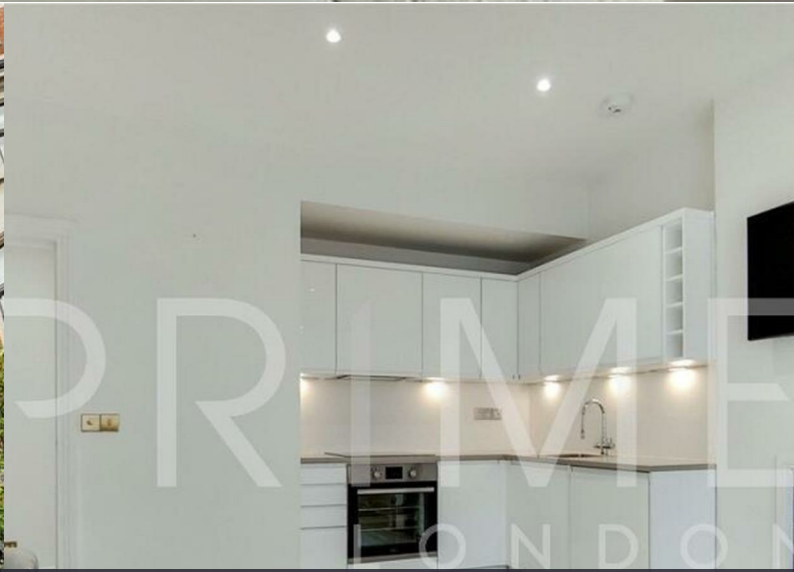




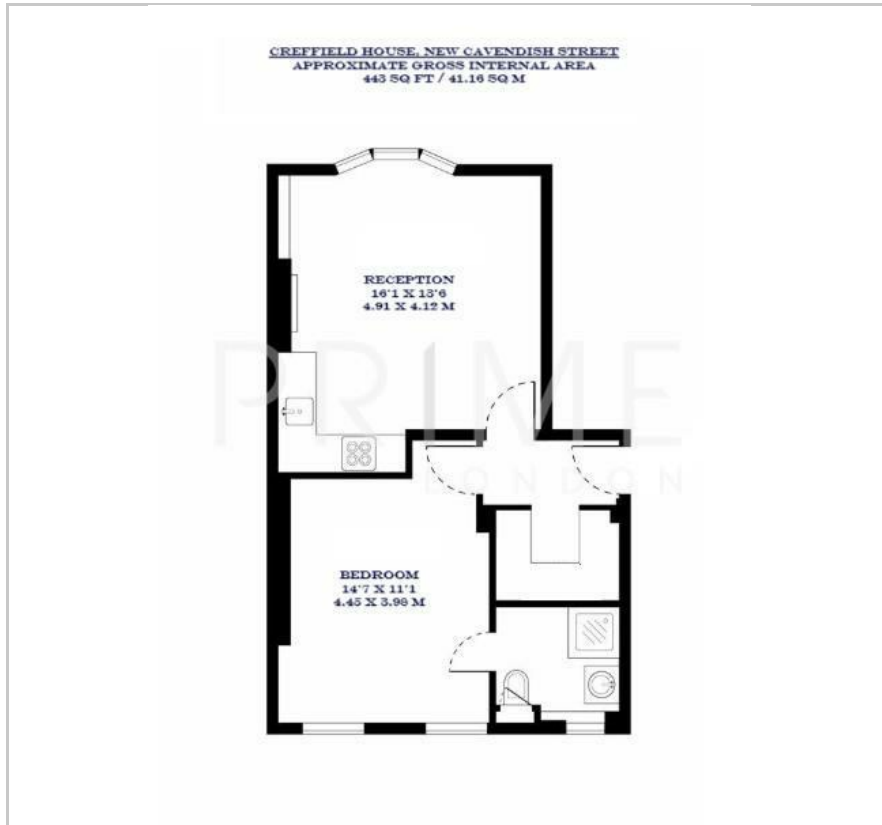
Creffield House

30 New Cavendish Street, Marylebone, W1G 8UA

£825 Per Week



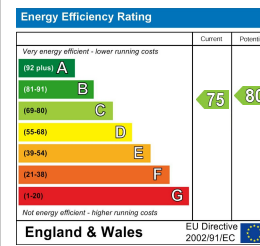
Floor Plan



Area Map



Energy Efficiency Graph



Viewing

By appointment. Contact us on 0207 052 1075 if you wish to arrange a viewing appointment for this property, or require further information.

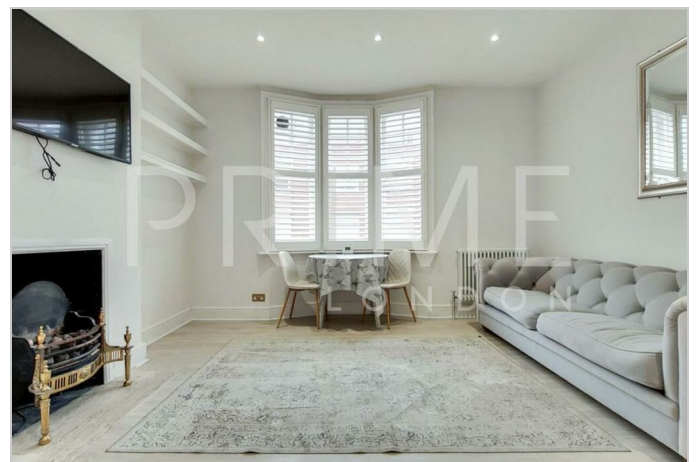
- One bedroom apartment
- 442 sq ft (41.6 sqm)
- Fully furnished to a high standard
- Walk-in wardrobe
- Close to the amenities of Marylebone High Street
- Short walk to Baker Street station

This charming one bedroom apartment, situated within a short stroll of Marylebone High Street, is available for lease through Prime London.

Totalling 442 sq ft (41.6 sqm), the property features a spacious, open-plan reception room and a modern, fully integrated kitchen. A generously sized double bedroom boasts a walk-in wardrobe, offering ample storage and an added touch of luxury. The bathroom is complete with contemporary fittings.

Creffield House is located on the west end of New Cavendish Street, just moments from the iconic Marylebone High Street, renowned for its chic boutiques, trendy cafés, and a variety of restaurants.

Public transport links are exceptional, with the Baker Street Underground Station just a short walk away, offering easy access to several major London tube lines.



These particulars, whilst believed to be accurate are set out as a general outline only for guidance and do not constitute any part of an offer or contract. Intending purchasers should not rely on them as statements of representation of fact, but must satisfy themselves by inspection or otherwise as to their accuracy. No person in this firm's employment has the authority to make or give any representation or warranty in respect of the property.