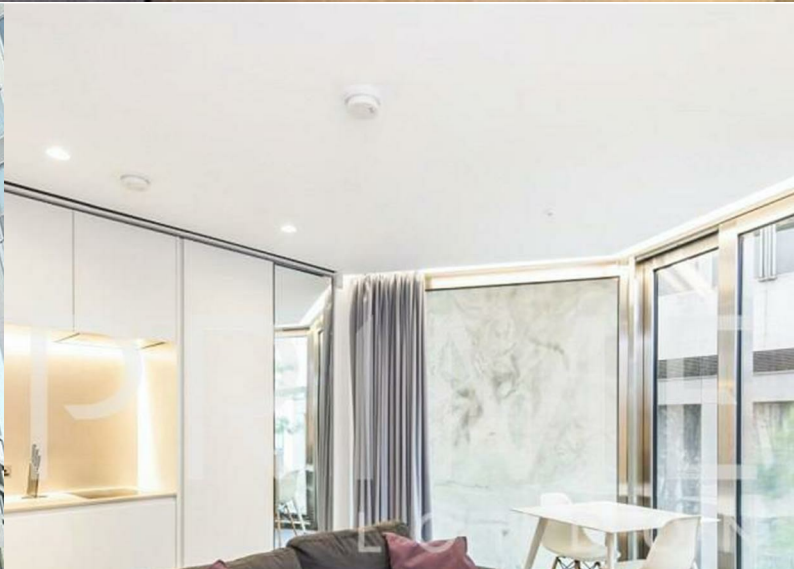




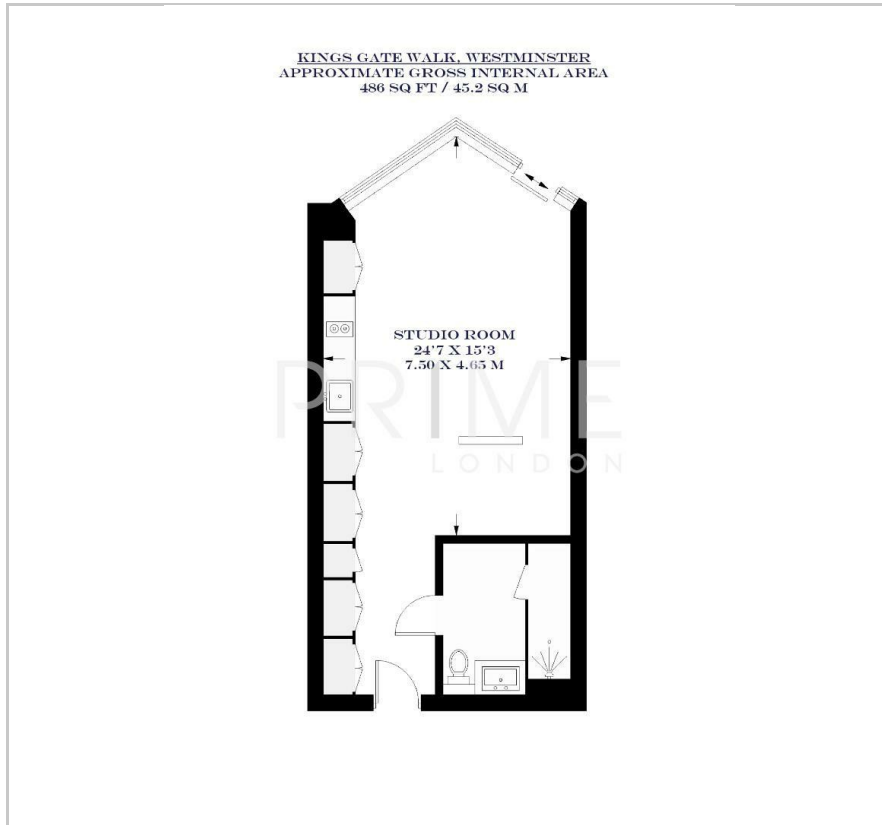
Kings Gate Walk

Westminster, London, SW1E 6AN

£795 Per Week



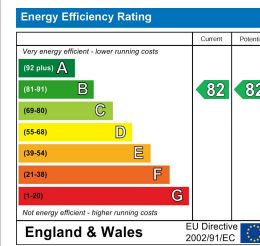
Floor Plan



Area Map



Energy Efficiency Graph



Viewing

By appointment. Contact us on 0207 052 1075 if you wish to arrange a viewing appointment for this property, or require further information.

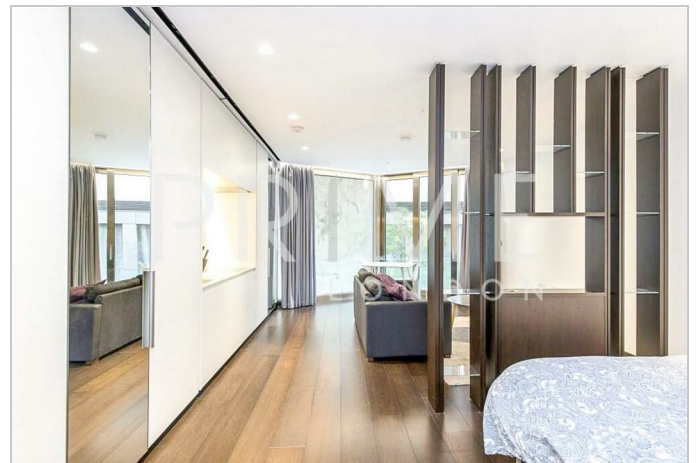
- Studio apartment
- Floor to ceiling windows
- Just 0.3 miles away from Victoria station
- 468 sq ft (45.2 sqm)
- Fully equipped kitchen with high end appliances
- 24 hour concierge

This spacious studio apartment, located in the popular Kings Gate Walk development, is available for lease through Prime London.

With a generous area of 468 sq ft (45.2 sqm), this apartment features a modern, open-plan layout that seamlessly integrates a fully equipped kitchen with high-end appliances, alongside a versatile bedroom/reception area. The apartment includes a luxurious bathroom, complete with a walk-in shower and stone tiling

Residents of Kings Gate Walk benefit from the convenience and security provided by a dedicated 24-hour concierge service, stationed in the stylish entrance lobby.

There are an abundance of shops and boutiques close by including Hugo Boss and restaurants and cafes continue in the nearby Nova complex. For transportation, Victoria underground and rail station is just 0.3 miles away.



These particulars, whilst believed to be accurate are set out as a general outline only for guidance and do not constitute any part of an offer or contract. Intending purchasers should not rely on them as statements of representation of fact, but must satisfy themselves by inspection or otherwise as to their accuracy. No person in this firm's employment has the authority to make or give any representation or warranty in respect of the property.