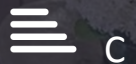




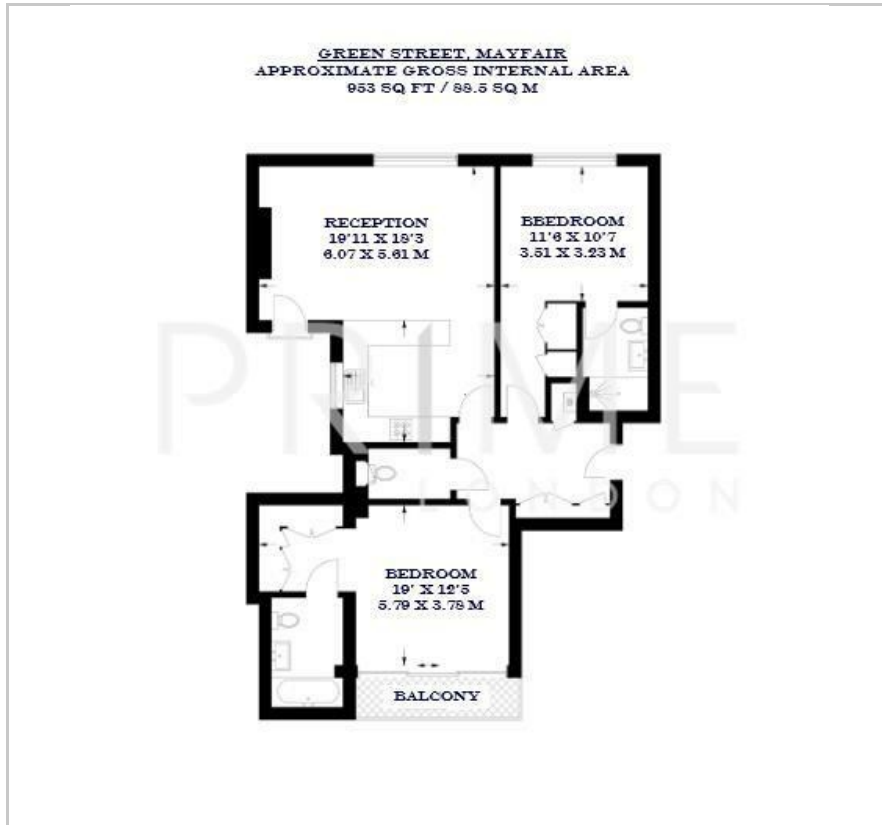
62 Green Street

Mayfair, London, W1K 6RQ

£2,500 Per Week



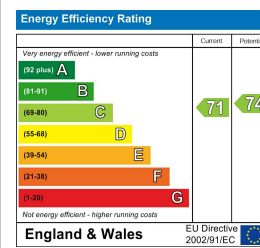
Floor Plan



Area Map



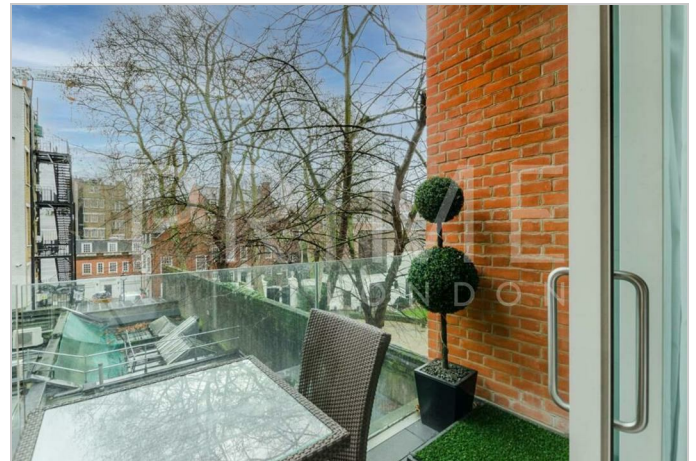
Energy Efficiency Graph



Viewing

By appointment. Contact us on 0207 052 1075 if you wish to arrange a viewing appointment for this property, or require further information.

- Two bedroom apartment
- Fully furnished
- Located in the heart of Mayfair
- 953 sq ft (88.5 sqm)
- Private balcony
- Just a few minutes to New Bond Street



This exquisite two-bedroom apartment, located in the heart of Mayfair and offering a luxurious living experience, is available for lease through Prime London.

The spacious property spans approximately 953 sq ft (88.5 sqm) and features an intelligently designed layout with ample natural light throughout. The property boasts a grand reception room, perfect for entertaining or relaxing, with its generous proportions and elegant style. The main bedroom is an expansive double en suite, complete with built-in wardrobes and direct access to a private balcony. The second bedroom also benefits from en suite facilities, ensuring privacy and comfort for guests or family members.

Additional highlights include a guest WC, a fully equipped modern kitchen, and a variety of storage options.

Situated just off the prestigious Oxford Street, this prime Mayfair address is surrounded by world-class shopping, dining, and cultural experiences. The apartment is conveniently located near Marble Arch and Bond Street Underground Stations, offering effortless connections to the rest of London.



These particulars, whilst believed to be accurate are set out as a general outline only for guidance and do not constitute any part of an offer or contract. Intending purchasers should not rely on them as statements of representation of fact, but must satisfy themselves by inspection or otherwise as to their accuracy. No person in this firm's employment has the authority to make or give any representation or warranty in respect of the property.