

16 Warwick Row

St James's Park, SW1E 5ER

Asking Price £825,000



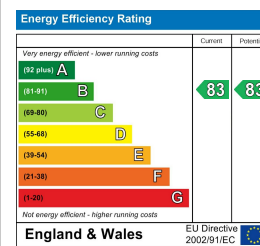
## Floor Plan



## Area Map



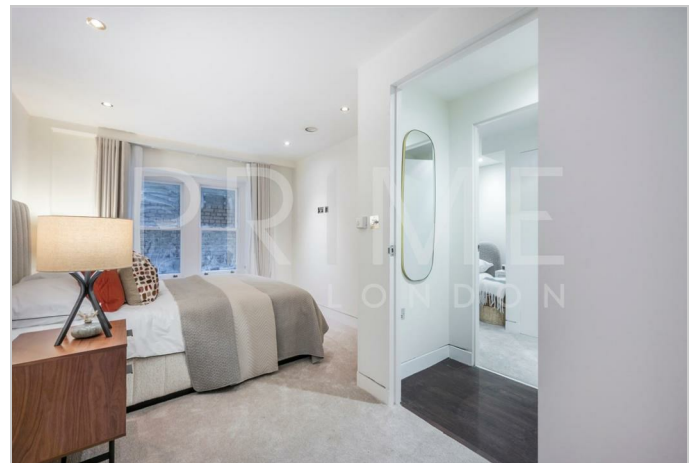
## Energy Efficiency Graph



## Viewing

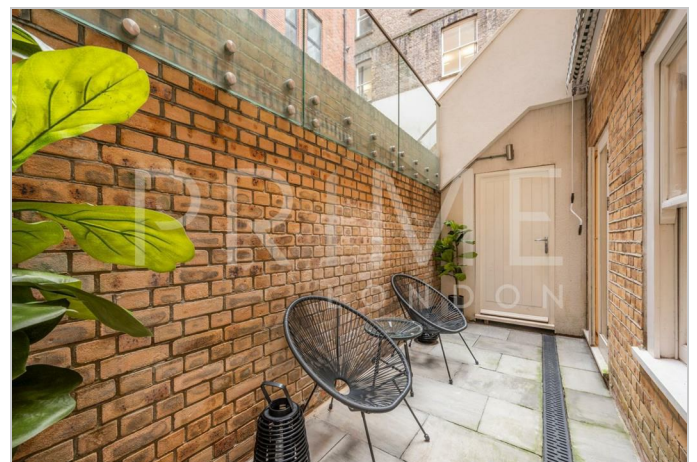
By appointment. Contact us on 0207 052 1075 if you wish to arrange a viewing appointment for this property, or require further information.

- Refurbished Duplex
- Two bed, two bathroom apartment
- 875 sq ft (82 sqm)
- Landscaped courtyard
- Yards from Buckingham Palace
- Chain free with vacant possession



Exclusively available through Prime London, this exceptional duplex apartment is offered with vacant possession and chain-free. Spanning 875 sq ft (82 sqm), the apartment has been meticulously refurbished to the highest standard. It comprises two spacious bedrooms, two luxurious bathrooms, and a master bedroom with an en suite shower. Both bedrooms open onto a private patio, with the added benefit of a small storage cupboard adjacent to the patio. The apartment is accessed via a beautifully landscaped courtyard, exclusive to residents, ensuring privacy and tranquillity. Located just a few hundred yards from Buckingham Palace Gardens and moments from Buckingham Palace, this property offers an enviable central position.

The vibrant Nova complex, home to over 20 restaurants and leisure venues, including Sticks and Sushi, Casa do Frango, Vagabonds, and Flight Club, is nearby. Westminster, Belgravia, and Victoria Station are all within walking distance – less than 10 minutes to Westminster and Belgravia, and just 5 minutes to Victoria – offering the perfect blend of luxury, convenience, and accessibility.



These particulars, whilst believed to be accurate are set out as a general outline only for guidance and do not constitute any part of an offer or contract. Intending purchasers should not rely on them as statements of representation of fact, but must satisfy themselves by inspection or otherwise as to their accuracy. No person in this firm's employment has the authority to make or give any representation or warranty in respect of the property.