



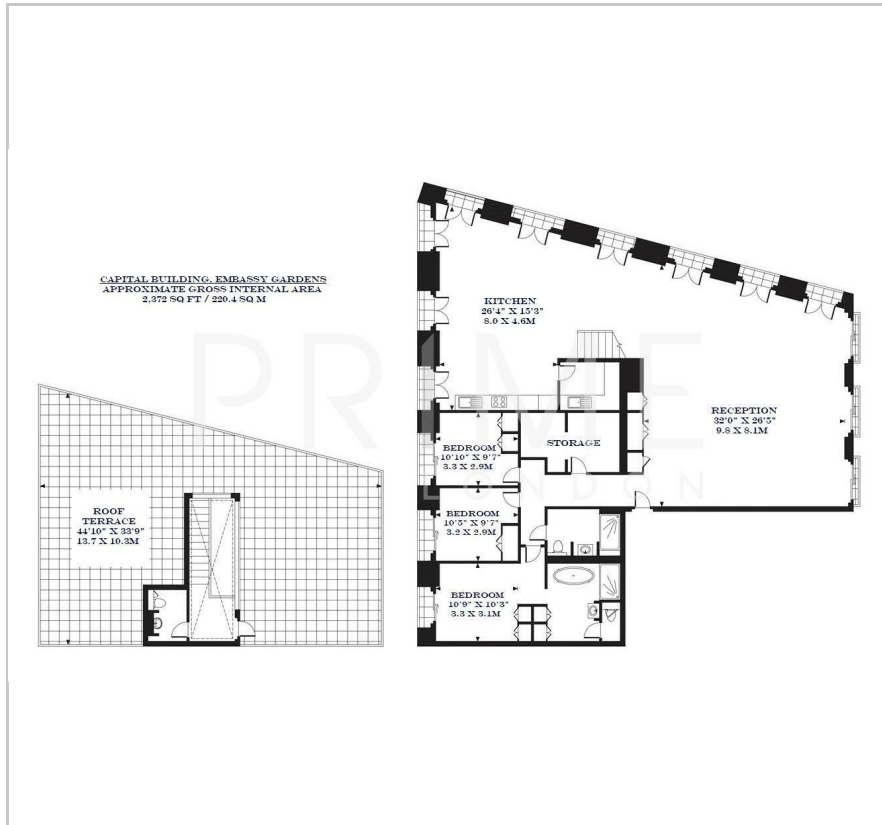
Capital Building

8 New Union Square, Embassy Gardens, SW8 5AU

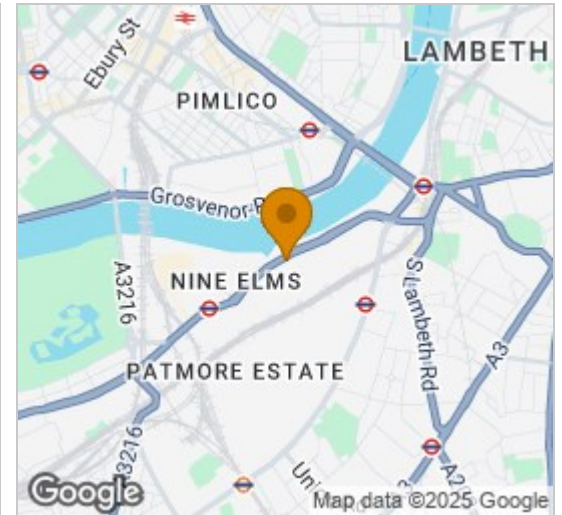
£2,750 Per Week



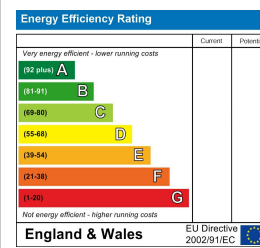
Floor Plan



Area Map



Energy Efficiency Graph



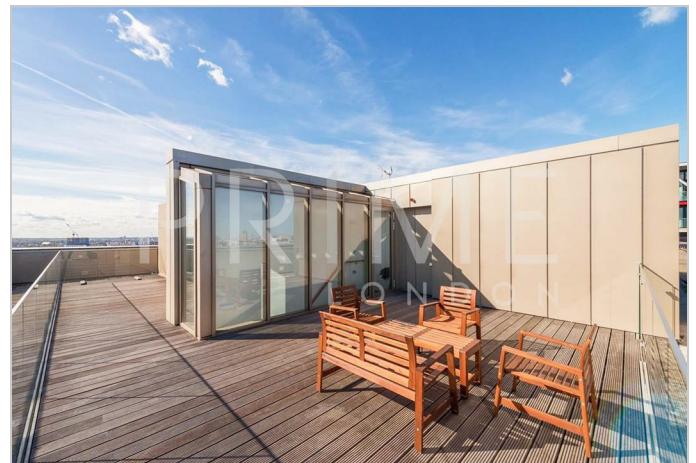
Viewing

By appointment. Contact us on 0207 928 6663 if you wish to arrange a viewing appointment for this property, or require further information.

- Large three-bedroom penthouse apartment
- River views
- Large private roof terrace
- Exclusive private club and health spa
- Secure valet parking
- Fully furnished and Comfort cooling
- 24 hour concierge

A huge three bedroom penthouse apartment of over 2,372 sq ft (220.4 sq m), with triple aspect reception boasting full river views, extensive roof terrace and secure valet parking, available for lease through Prime London in The Capital Building, Embassy Gardens.

Designed to the highest specification, the apartment boasts comfort cooling and abundant natural light reminiscent of a Manhattan loft apartment. Located on the banks of the Thames and near London's cultural South bank, residents not only enjoy a wealth of the Capital's finest attractions and amenities practically on their doorstep but also premium residents facilities including an exclusive private club and health spa, which rivals the best international hotels in the world.



These particulars, whilst believed to be accurate are set out as a general outline only for guidance and do not constitute any part of an offer or contract. Intending purchasers should not rely on them as statements of representation of fact, but must satisfy themselves by inspection or otherwise as to their accuracy. No person in this firm's employment has the authority to make or give any representation or warranty in respect of the property.