



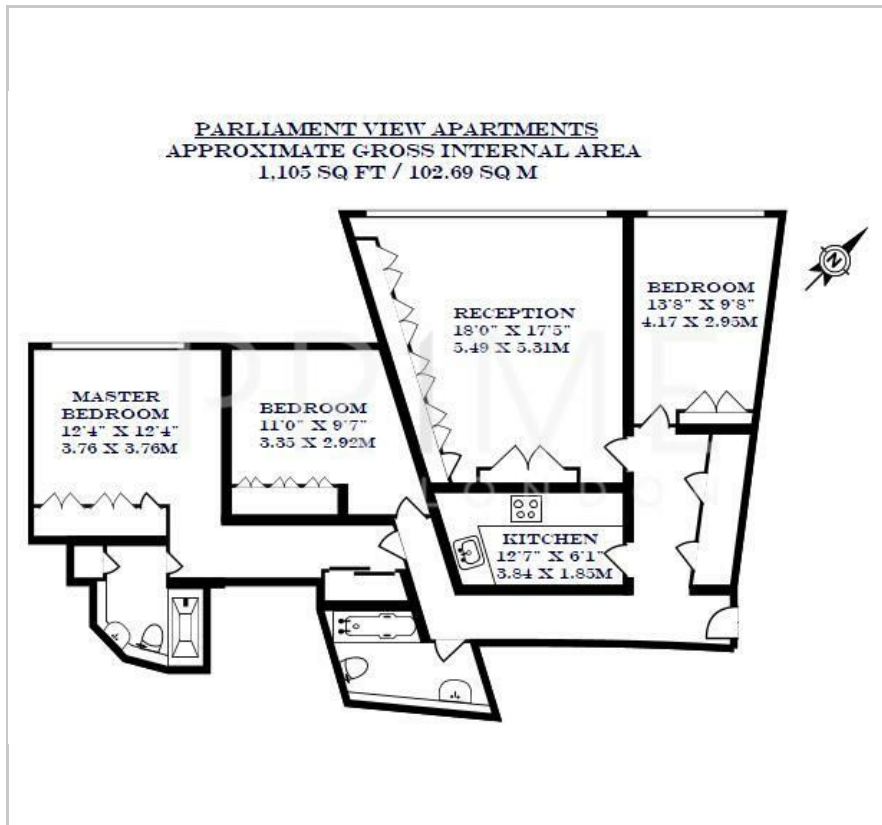
Parliament View Apartments

1 Albert Embankment, SE1 7XQ

£923 (From) Per Week



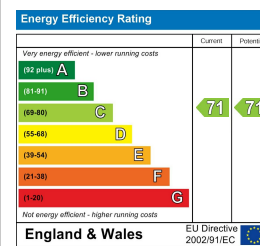
Floor Plan



Area Map



Energy Efficiency Graph



Viewing

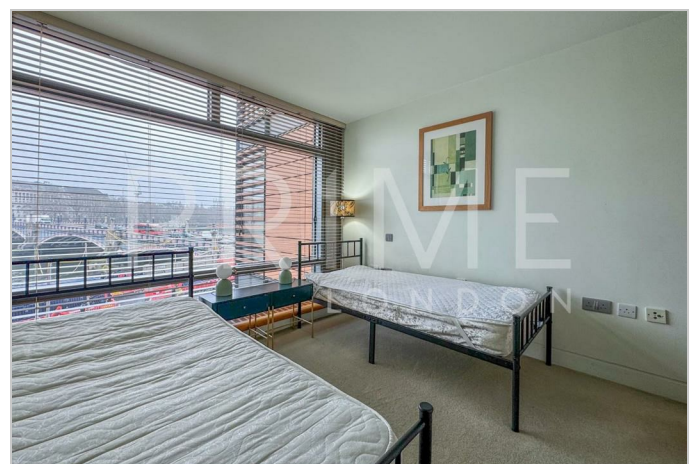
By appointment. Contact us on 0207 928 6663 if you wish to arrange a viewing appointment for this property, or require further information.

- Three-bedroom apartment
- 1206 sqft / 112 qm
- Stunning views of the River Thames and Houses Of Parliament
- Furnished
- Includes parking
- Residents' gymnasium and 24 hour concierge service

This furnished three-bedroom apartment, showcasing iconic views of the River Thames and Houses of Parliament, totalling 1,105 sqft / 102.69 sqm and with secure parking, is available to rent through Prime London.

The apartment comprises a bright reception with exceptional views, a separate fully fitted kitchen, a master bedroom facing the river with an ensuite bathroom, two further double bedrooms and a separate family bathroom. The property also benefits from having wooden flooring and air cooling.

Parliament View itself offers a 24 hour concierge service, residents' gymnasium and an excellent location on the river between Lambeth and Vauxhall Bridge. As a result the development is within easy reach of the West End, Westminster, the City and South Bank. Waterloo and Vauxhall rail and underground station are also both within walking distance of the property, making it easily accessible from all locations.



These particulars, whilst believed to be accurate are set out as a general outline only for guidance and do not constitute any part of an offer or contract. Intending purchasers should not rely on them as statements of representation of fact, but must satisfy themselves by inspection or otherwise as to their accuracy. No person in this firm's employment has the authority to make or give any representation or warranty in respect of the property.