

## Two Riverlight Quay

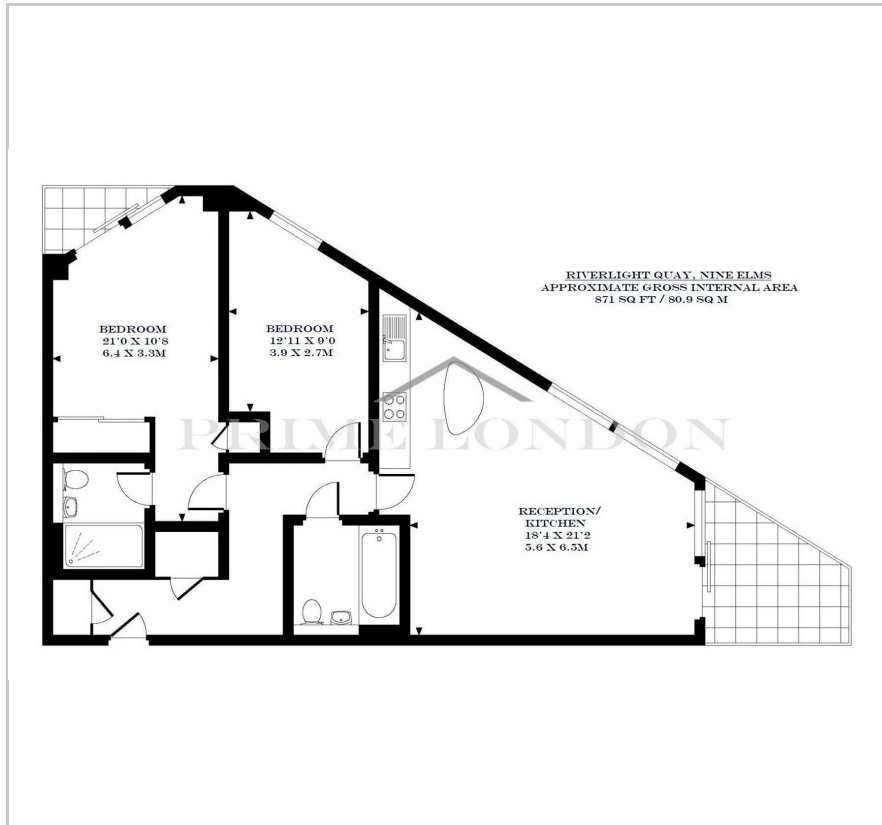
Nine Elms, SW8 5AU

£923 Per Week

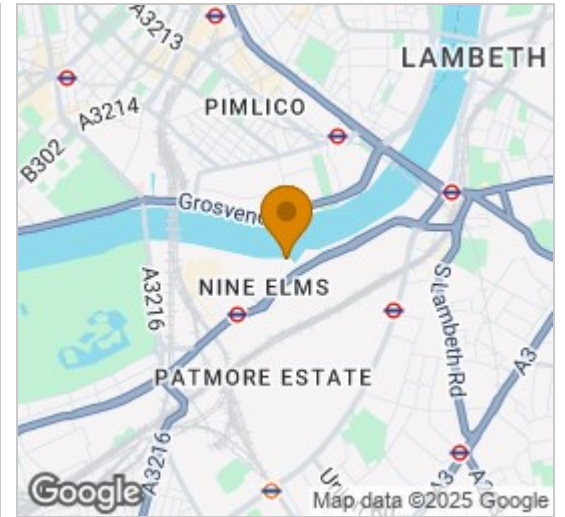




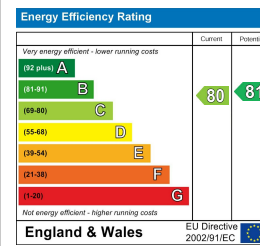
## Floor Plan



## Area Map



## Energy Efficiency Graph



## Viewing

By appointment. Contact us on 0207 928 6663 if you wish to arrange a viewing appointment for this property, or require further information.

- Two bedroom two bathroom
- 871 sq ft / 80.9 sq m
- Secure parking space
- Fully furnished
- On-site leisure and resident's facilities
- 24 hour concierge

This fully furnished two bedroom two bathroom prow style apartment, which faces onto the River Thames with views from the balcony up towards the city and down towards Battersea Power Station, is available for lease through Prime London.

The 871 sq ft / 80.9 sq m property comprises a light-filled reception with open fully fitted kitchen, two balconies, family bathroom and en suite to master, two equally well sized double bedrooms. Everything is finished to a high specification level throughout, and the property further benefits from having comfort cooling and under floor heating.

An exclusive residents Clubhouse offers a unique third space between home and work which to socialise, exercise and be entertained, from a private screening room to virtual golf facilities; a residents club lounge and library and a 15m swimming pool, state-of-the-art gymnasium and spa.



These particulars, whilst believed to be accurate are set out as a general outline only for guidance and do not constitute any part of an offer or contract. Intending purchasers should not rely on them as statements of representation of fact, but must satisfy themselves by inspection or otherwise as to their accuracy. No person in this firm's employment has the authority to make or give any representation or warranty in respect of the property.