



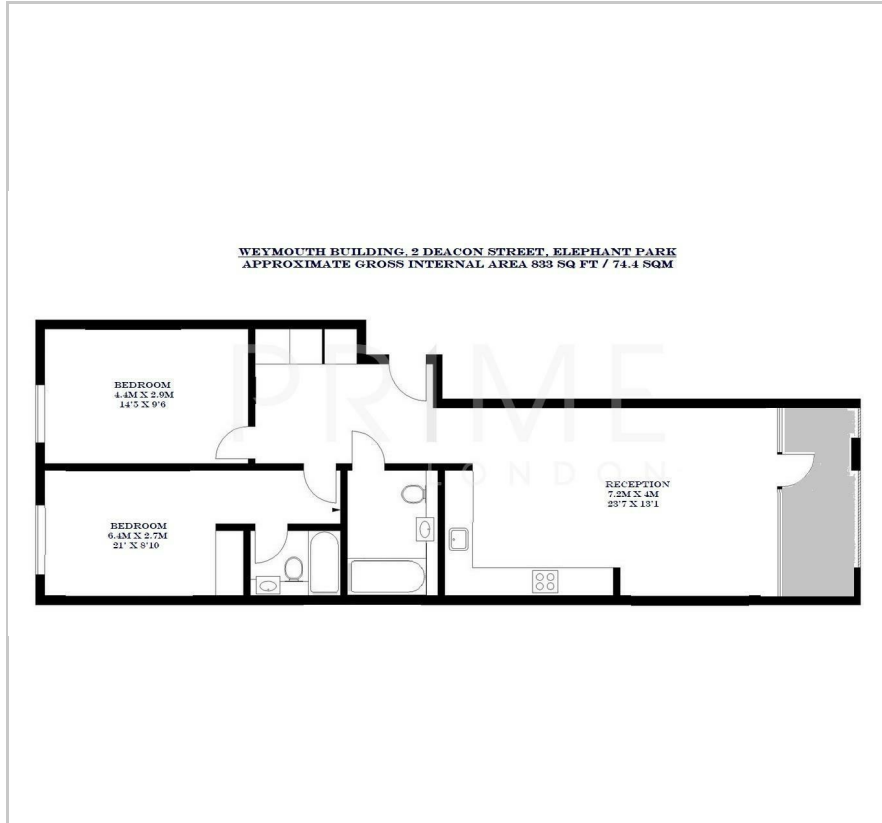
Weymouth Building

Elephant Park, SE17 1GB

Asking Price £775,000



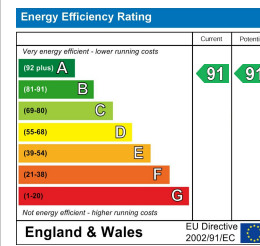
Floor Plan



Area Map



Energy Efficiency Graph



Viewing

By appointment. Contact us on 0207 928 6663 if you wish to arrange a viewing appointment for this property, or require further information.

- Dual aspect apartment
- 833 sq ft
- 24 hour concierge
- Residents' gym



This spacious dual-aspect apartment of over 900 sq ft, set in the North Block of Highwood Garden Terrace, is available for chain free sale through Prime London Residential.

The property comprises an open plan reception with modern fitted kitchen, two double bedrooms, both with fitted wardrobes and ensuite to master, additional family bathroom, substantial storage and a private South-West facing balcony with access from the lounge.

Residents have access to a 24- hour concierge set within a spacious lobby, as well as access to a rooftop function room, complete with a generous terrace overlooking the London skyline, communal grow garden with 40 plots to plant and nurture fruit, vegetables and herbs as well as the Walworth Road retail shops.



These particulars, whilst believed to be accurate are set out as a general outline only for guidance and do not constitute any part of an offer or contract. Intending purchasers should not rely on them as statements of representation of fact, but must satisfy themselves by inspection or otherwise as to their accuracy. No person in this firm's employment has the authority to make or give any representation or warranty in respect of the property.