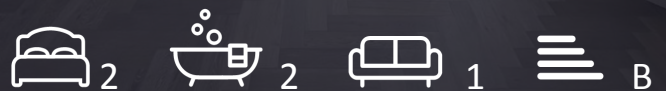




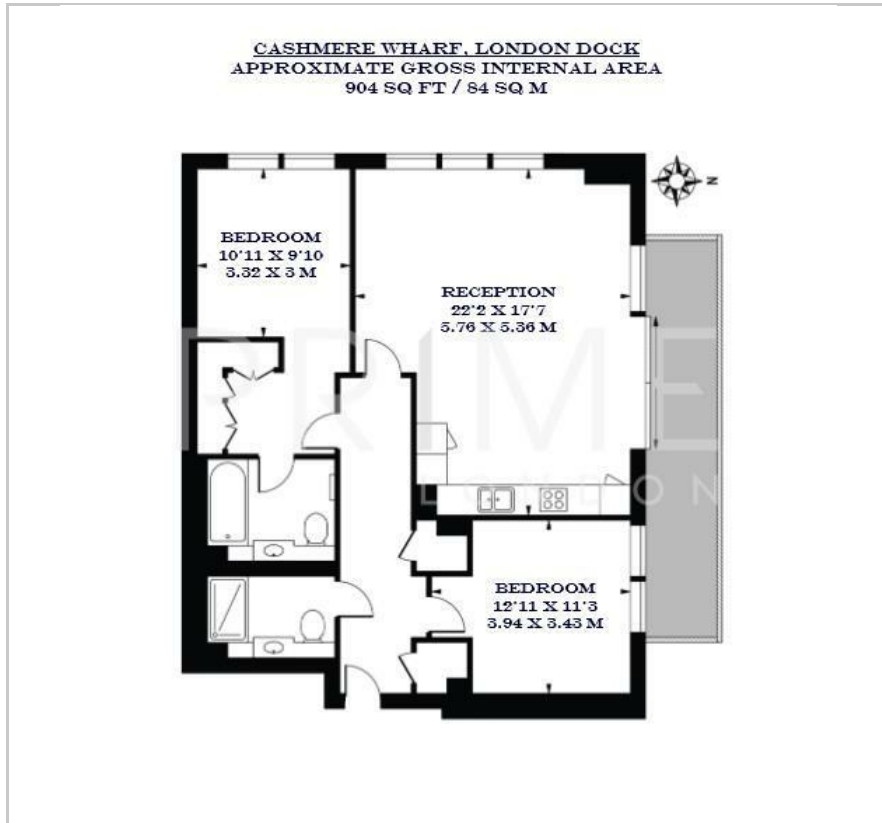
Cashmere Wharf

23 Gauging Square, London Dock, E1W 2AW

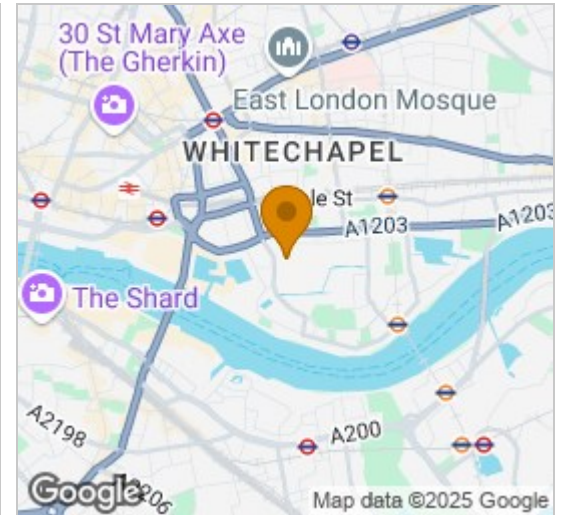
£900 Per Week



Floor Plan



Area Map



Energy Efficiency Graph



Viewing

By appointment. Contact us on 0207 052 1075 if you wish to arrange a viewing appointment for this property, or require further information.

- Two bed, two bath - 960 sq ft ■ 11th Floor / 90 sq m
- 24 hours concierge and ■ Sauna, gym and swimming security pool
- Cinema and Games Room ■ Golf simulator and Squash Court

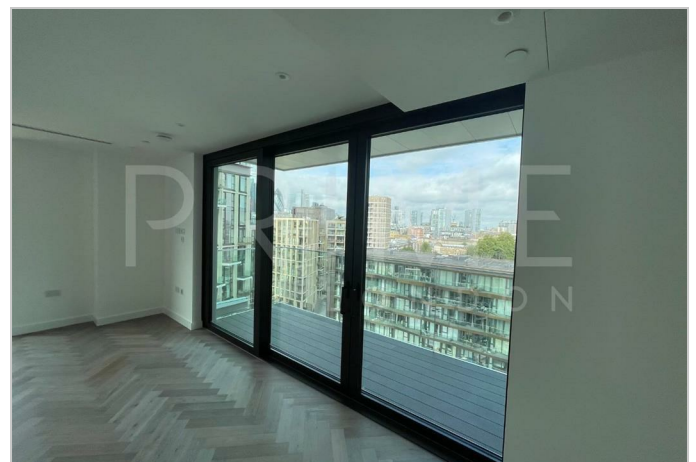


This stunning and spacious two-bedroom, two-bathroom apartment, situated on the 11th floor and spanning 904 sq. ft (approx. 84 sq. m), is available to rent in Cashmere Wharf, part of the prestigious London Dock development.

The apartment offers a rare triple aspect, with impressive views towards both Canary Wharf and the City of London. Thoughtfully designed for easy living, this residence enjoys access to beautifully landscaped private gardens, vibrant squares, and attractive boulevards. Floor-to-ceiling windows flood the space with natural light, enhancing the sense of openness, while the bespoke bathrooms provide a luxurious, spa-like experience.

Residents of London Dock benefit from an impressive 14,000 sq. ft of world-class amenities, including a steam room, swimming pool, jacuzzi, and 24-hour concierge service. For leisure and fitness, there is a virtual golf suite, a state-of-the-art gym, and a private cinema for the ultimate entertainment experience.

Conveniently located, the apartment is just a nine-minute walk from Tower Hill Station (Circle and District lines) and an eleven-minute walk from Shadwell Station (DLR and Overground), providing excellent transport links across the city.



These particulars, whilst believed to be accurate are set out as a general outline only for guidance and do not constitute any part of an offer or contract. Intending purchasers should not rely on them as statements of representation of fact, but must satisfy themselves by inspection or otherwise as to their accuracy. No person in this firm's employment has the authority to make or give any representation or warranty in respect of the property.