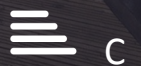




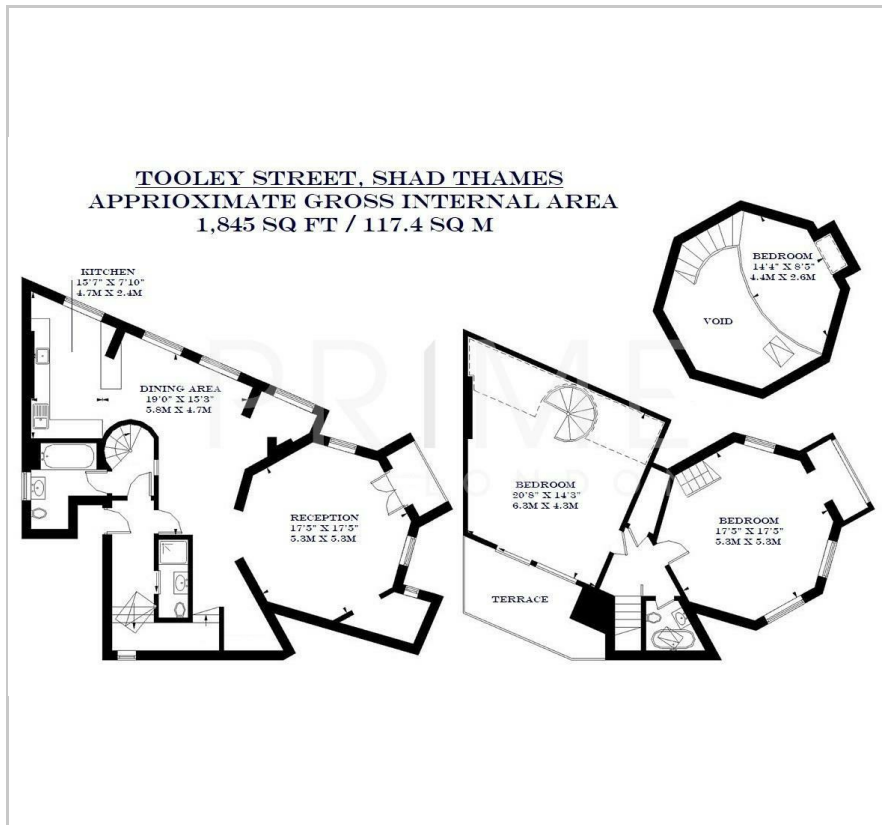
203 Tooley Street

London Bridge, SE1 2JX

£923 Per Week



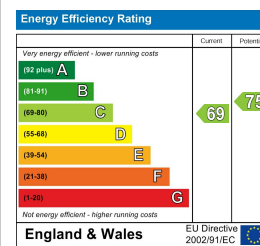
Floor Plan



Area Map



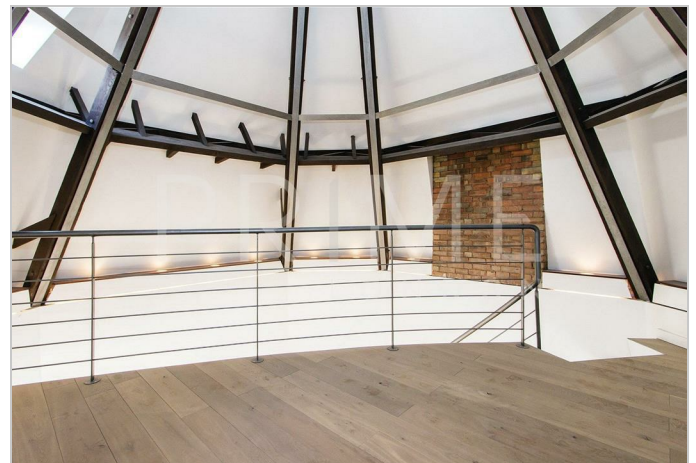
Energy Efficiency Graph



Viewing

By appointment. Contact us on 0207 928 6663 if you wish to arrange a viewing appointment for this property, or require further information.

- Two or three bedroom ■ 1,845 sq ft (117.4 sq m) of apartment living space
- Split level apartment ■ Unfurnished
- Features wooden flooring ■ Close to London Bridge and exposed wooden beams station



This excellent and unique split-level two/three bedroom apartment, boasting almost 1,845 sq ft (117.4 sq m) of living space, is available to rent through Prime London.

Situated in the heart of SE1, this wonderfully designed apartment comprises a large reception room with balcony, open plan kitchen/dining room, spacious master bedroom with mezzanine level, second large bedroom with private terrace, two bathrooms and a shower room. The property further benefits from gorgeous wood floors, exposed wood beams and is offered unfurnished.

The property is also only a couple of minutes walk to London Bridge Underground and Rail stations, offering great connections to the entire city.



These particulars, whilst believed to be accurate are set out as a general outline only for guidance and do not constitute any part of an offer or contract. Intending purchasers should not rely on them as statements of representation of fact, but must satisfy themselves by inspection or otherwise as to their accuracy. No person in this firm's employment has the authority to make or give any representation or warranty in respect of the property.