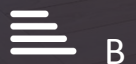


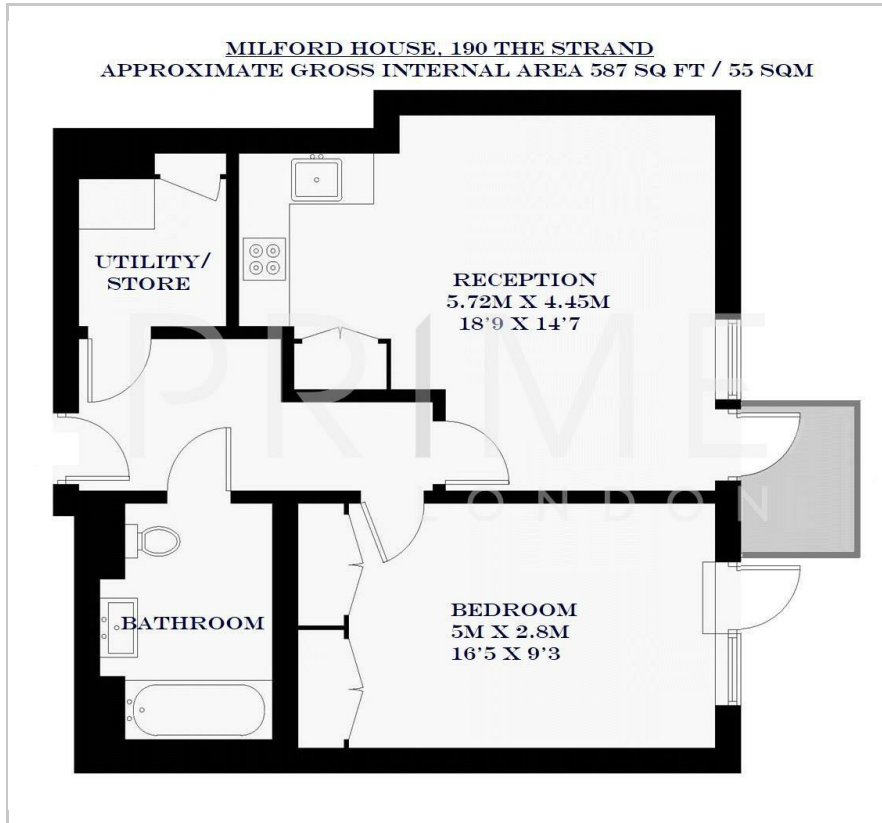
Milford House

190 The Strand, WC2R 1AB

Asking Price £1,580,000



Floor Plan



Area Map



Energy Efficiency Graph

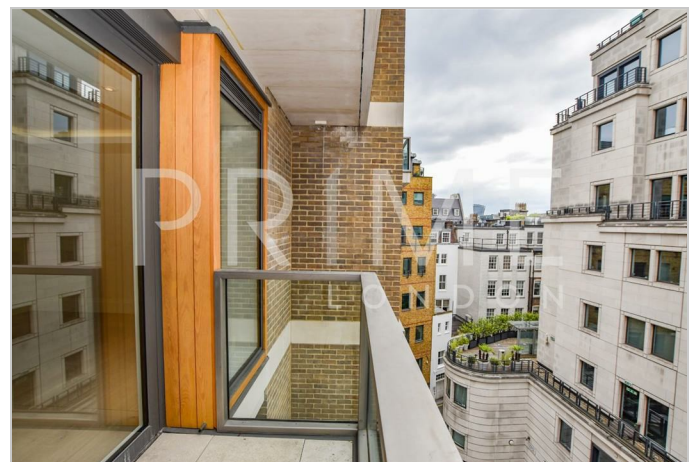


Viewing

By appointment. Contact us on 0207 052 1075 if you wish to arrange a viewing appointment for this property, or require further information.

- 587 sq ft (55 sqm)
- Private balcony
- Solid parquet wood flooring
- Residents' private cinema
- Swimming pool
- Allocated secure parking
- Comfort cooling
- Five-star 24 hour concierge service
- State of the art gym
- Spa facilities

An exceptional brand new apartment of 587 sq ft (55 sqm), with allocated secure parking, situated on the quiet south facing side of the luxurious 190 The Strand development, is available for chain free sale through Prime London. The property comprises a spacious entrance hall with ample storage, a large open-plan reception room with private balcony, smart kitchen with Miele integrated appliances, substantial double bedroom (with built-in wardrobes) and luxury bathroom suite. The property also features comfort cooling, underfloor heating, and solid parquet wood flooring. 190 The Strand benefits from a five-star 24 hour concierge service, residents' private cinema, state of the art gym and swimming pool/spa.



These particulars, whilst believed to be accurate are set out as a general outline only for guidance and do not constitute any part of an offer or contract. Intending purchasers should not rely on them as statements of representation of fact, but must satisfy themselves by inspection or otherwise as to their accuracy. No person in this firm's employment has the authority to make or give any representation or warranty in respect of the property.