



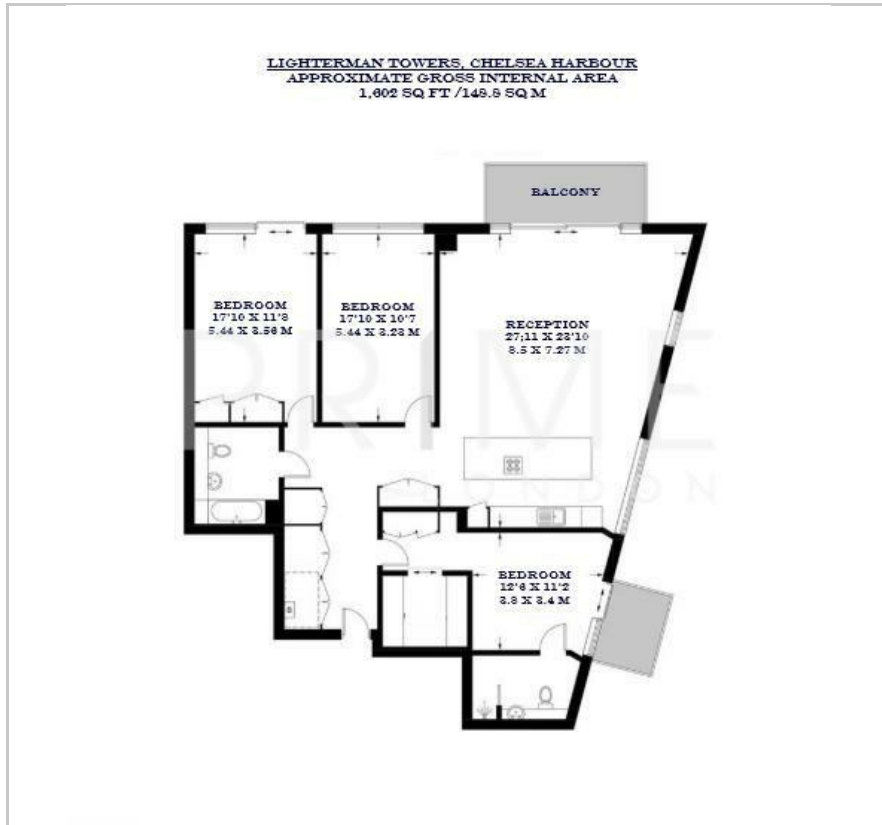
Lighterman Towers

Chelsea Harbour, London, SW10 0HW

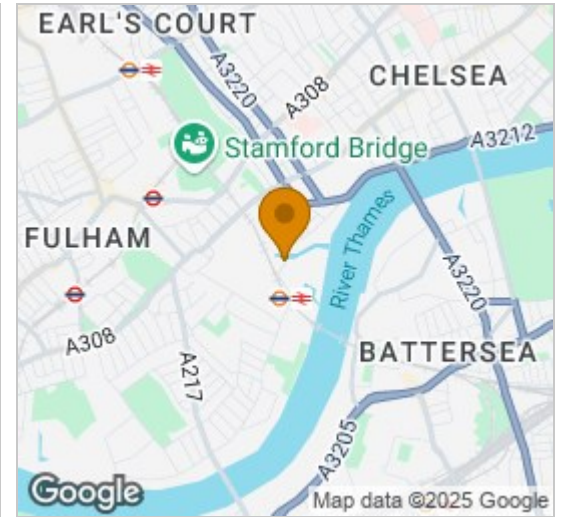
£1,845 Per Week



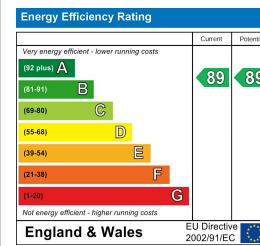
Floor Plan



Area Map



Energy Efficiency Graph



Viewing

By appointment. Contact us on 0207 052 1075 if you wish to arrange a viewing appointment for this property, or require further information.

- Three bedroom apartment
- Two private balconies
- Residents' gym
- 1,602 sq ft (148.8 sqm)
- Ample storage throughout
- 24 hour concierge



This expansive three-bedroom apartment, located in the prestigious Lighterman Towers, Chelsea Harbour, is available for lease through Prime London.

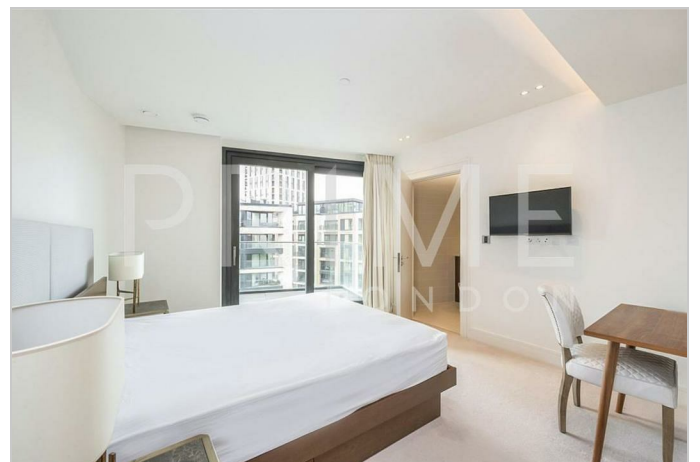
Spanning across 1,602 sq ft (148.8 sqm), the property features an open-plan living and dining area bathed in natural light through floor-to-ceiling windows, creating an inviting space with breathtaking views of the Thames and Chelsea Harbour. Seamlessly connected to a private balcony, this area provides the perfect setting for both relaxation and entertaining.

The high-specification kitchen is thoughtfully designed with premium appliances, extensive cabinetry, and a large island, making it ideal for both everyday living and hosting guests.

Each of the three spacious bedrooms is designed for comfort and functionality. The master suite features a stylish en-suite bathroom, while the two additional bedrooms share a sleek, modern bathroom. All bedrooms include ample built-in storage, ensuring a balance of elegance and practicality.

Residents enjoy exclusive amenities, including a concierge service, a landscaped roof garden, a state-of-the-art gym, and secure underground parking.

Perfectly positioned in Chelsea Harbour, this stunning home is moments from boutique shopping, fine dining, and the renowned Chelsea Harbour Design Centre.



These particulars, whilst believed to be accurate are set out as a general outline only for guidance and do not constitute any part of an offer or contract. Intending purchasers should not rely on them as statements of representation of fact, but must satisfy themselves by inspection or otherwise as to their accuracy. No person in this firm's employment has the authority to make or give any representation or warranty in respect of the property.