



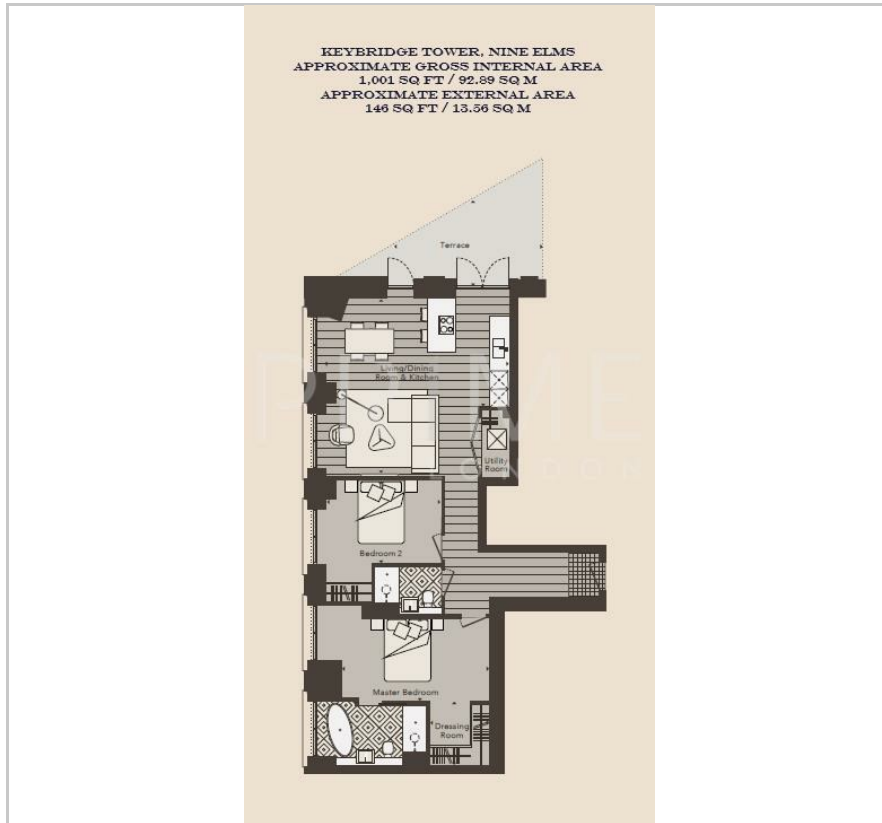
Keybridge Tower

Nine Elms, SW8 1BG

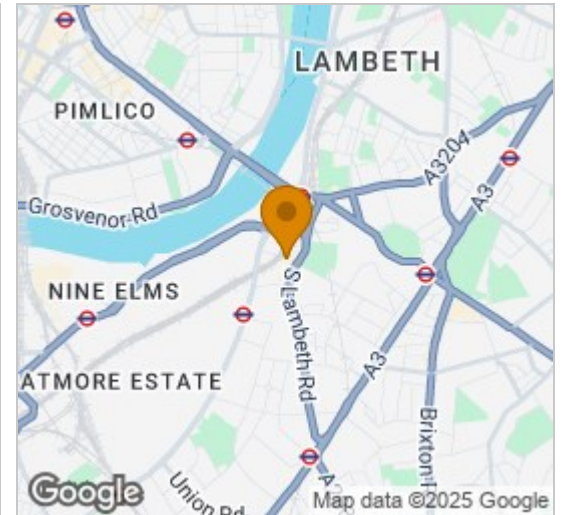
Best Offers Over £999,999



Floor Plan



Area Map



Energy Efficiency Graph



Viewing

By appointment. Contact us on 0207 928 6663 if you wish to arrange a viewing appointment for this property, or require further information.

- Loft style two bedroom ▪ Large private terrace apartment
- Updated and modified ▪ Secure parking space throughout
- Gym, pool, spa, sauna and ▪ 24-hour concierge service steam room and residents' Club Lounge

This spacious loft style two bedroom apartment with a rare private terrace and set within the highly desirable Keybridge development, is available for chain free sale through Prime London. The property also comes with secure underground parking.

The property is an excellent size at 1,001 sq ft (92.89 sq m) and is located in the UK's tallest brick tower, which is also surrounded by 1 acre of landscaped open space. The apartment is finished to a high standard and comprises an open-plan living and dining area with a modern integrated kitchen and breakfast bar, leading to a large private terrace. The property further comprises a spacious main bedroom including an en-suite bathroom, and a large second double bedroom with a separate luxurious family bathroom. Additional features include comfort cooling, underfloor heating, and ample storage throughout.

Residents of Keybridge benefit from a 24 hour concierge service, a gym and 15 metre swimming pool, a club lounge and communal gardens, all within walking distance of Zone 1 transport links.



These particulars, whilst believed to be accurate are set out as a general outline only for guidance and do not constitute any part of an offer or contract. Intending purchasers should not rely on them as statements of representation of fact, but must satisfy themselves by inspection or otherwise as to their accuracy. No person in this firm's employment has the authority to make or give any representation or warranty in respect of the property.