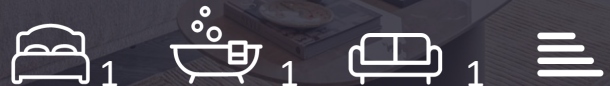


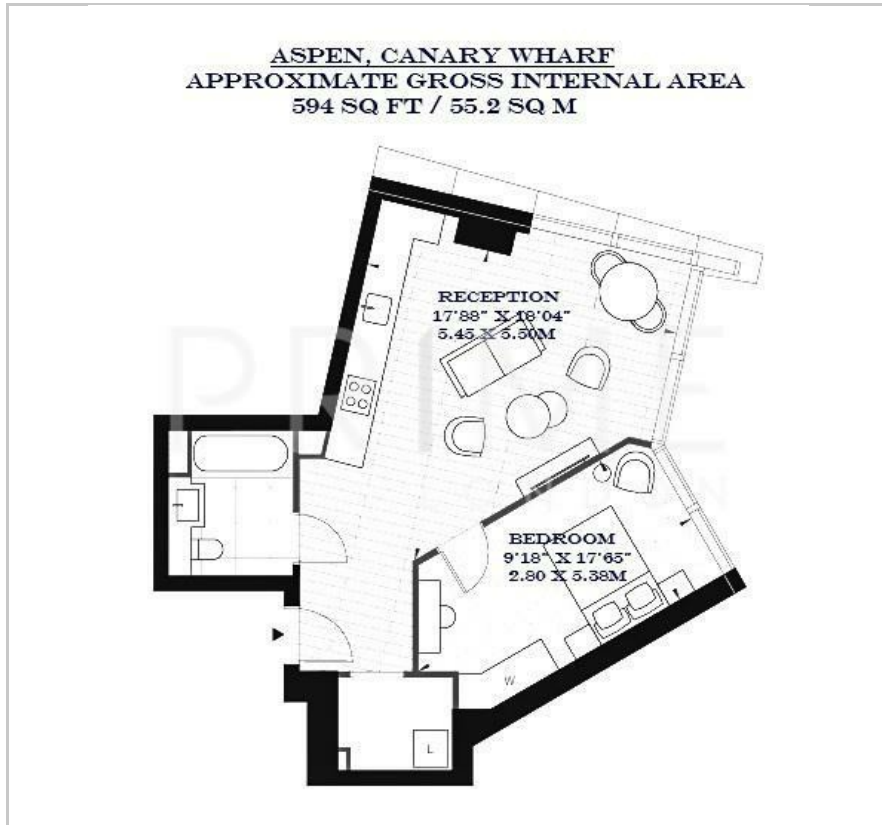
## Aspen

50 Marsh wall, SE1 7BT

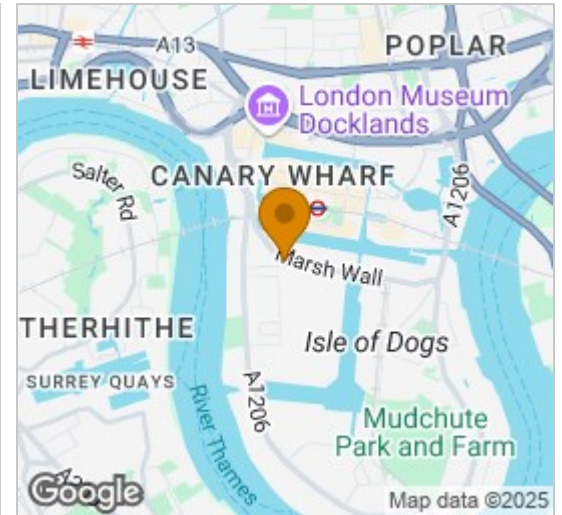
£710,000



## Floor Plan



## Area Map



## Energy Efficiency Graph

## Viewing

By appointment. Contact us on 0207 928 6663 if you wish to arrange a viewing appointment for this property, or require further information.

- One bedroom apartment
- 595 sqft / 55.2 sqm
- 24-hour Concierge
- 22nd floor health & wellness suite
- 63rd floor sky bar & lounge
- 11 Minute Walk to Canary Wharf Station

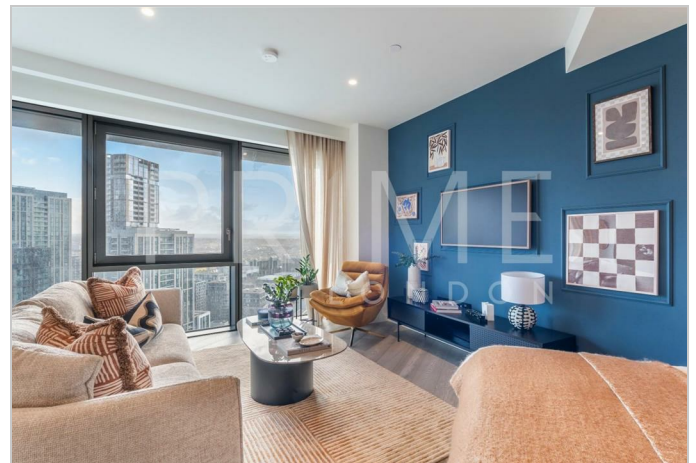
This stunning one-bedroom apartment in the new Aspen development in Canary Wharf offers 595 sq ft / 55.2 sq m of space and is available for chain free sale through Prime London.

This apartment comprises a spacious open plan reception and kitchen, a double bedrooms with a bespoke built in wardrobe, and a modern bathrooms with bespoke textured feature walls and marble effect vanity units. The property also benefits from having wooden flooring throughout and underfloor heating.

Residents of Aspen get to enjoy a paramount sky bar and lounge, an outdoor terrace with stunning views of London, a private dining and wine room, business suite, residents lounge and winter garden and on the 22nd floor Aspen offers a health and wellness suite including a gym, sauna, steam room and vanity pool. The 1st floor of the building also offers a soft play area for young children along with a family room. Residents of Aspen can also benefit from exclusive membership to the Dorset Hotel, which will offer residents a range of hotel services including newspaper delivery, housekeeping, laundry and catering.

Aspen is very well connected: There's the jubilee line, south quay (DLR and Heron Quays (DLR)). The Thames Clippers river boat service also runs from Canary Wharf pier to London's landmark destinations such as Greenwich, Tower Bridge, Tate Modern, Westminster and Blackfriars. Aspen is located near many shops, bars, restaurants and cafe's.

\*These photos are of a show apartment and are intended to show example finishes and layout\*



These particulars, whilst believed to be accurate are set out as a general outline only for guidance and do not constitute any part of an offer or contract. Intending purchasers should not rely on them as statements of representation of fact, but must satisfy themselves by inspection or otherwise as to their accuracy. No person in this firm's employment has the authority to make or give any representation or warranty in respect of the property.