



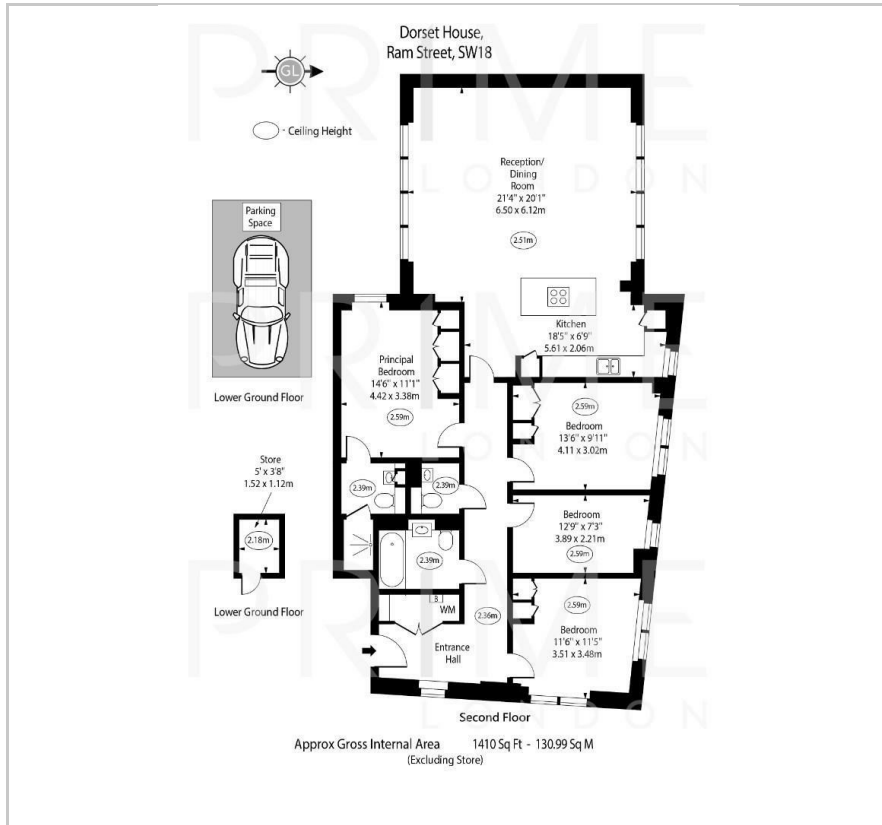
## Dorset House

Ram Quarter, Wandsworth, SW18 1UB

Asking Price £1,095,000



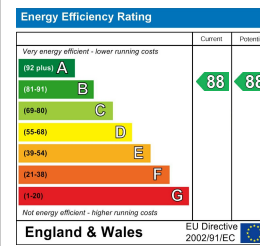
## Floor Plan



## Area Map



## Energy Efficiency Graph



## Viewing

By appointment. Contact us on 0207 928 6663 if you wish to arrange a viewing appointment for this property, or require further information.

- Four bedroom apartment
- 1,410 sq ft (131 sq m)
- Underfloor heating and comfort cooling
- Storage unit
- Underground parking
- Chain free and vacant possession
- Beautiful garden views
- 24 hour concierge service

Prime London is delighted to bring to market this unique and spacious four-bedroom apartment, located in the highly regarded Ram Quarter development in the heart of Wandsworth. Offered chain-free with vacant possession, this property combines convenience and modern living in an exceptional setting.

Situated on the second floor, the apartment spans 1,410 sq ft (131 sq m) of well-designed space, perfect for contemporary lifestyles. The open-plan kitchen and living area is ideal for entertaining and everyday family life. Full-height doors open onto Juliet balconies on either side, bathing the space in natural light and offering tranquil views of the private residents' garden. The stylish, integrated kitchen features high-quality appliances for effortless functionality.

The property includes four well-proportioned bedrooms, ideal for a growing family or those needing additional space for a study or baby room. There are three double bedrooms, all of which boast built-in wardrobes, as well as one single room, offering flexibility for various uses. The master suite features a modern ensuite with a walk-in shower. The other three bedrooms are served by a spacious family bathroom, with the additional convenience of a separate guest WC. Underfloor heating and comfort cooling provide year-round comfort, and residents benefit from a 24-hour concierge service.

Dorset House is part of the prestigious Ram Quarter development, ideally located in central Wandsworth. Wandsworth Town station is just a short walk away, providing excellent transport links into central London.



These particulars, whilst believed to be accurate are set out as a general outline only for guidance and do not constitute any part of an offer or contract. Intending purchasers should not rely on them as statements of representation of fact, but must satisfy themselves by inspection or otherwise as to their accuracy. No person in this firm's employment has the authority to make or give any representation or warranty in respect of the property.