



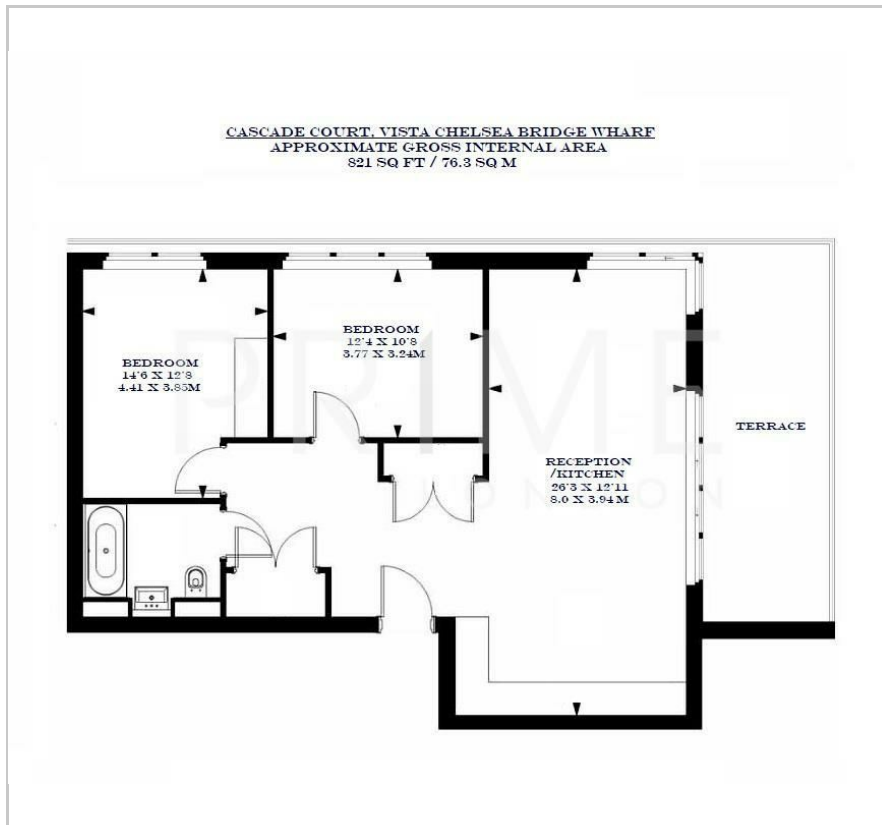
Cascade Court

Sopwith Way, Vista, SW11 8AZ

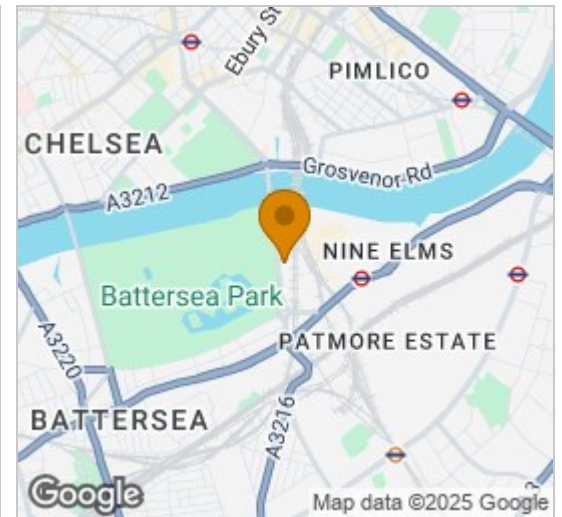
Asking Price £800,000



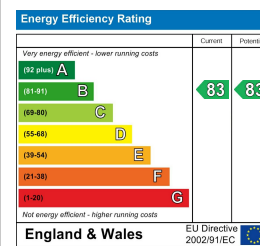
Floor Plan



Area Map



Energy Efficiency Graph



Viewing

By appointment. Contact us on 0207 928 6663 if you wish to arrange a viewing appointment for this property, or require further information.

- Two bedroom two bathroom ■ 821 sq ft / 76.3 sq m apartment
- Large private terrace ■ Chain free
- Resident's leisure facilities ■ 24 hour concierge

This modern two bedroom apartment, with large private terrace and set within the highly sought after Vista Chelsea Bridge Wharf development (next to Battersea Park and the River Thames), is available for chain free sale through Prime London.

Cascade Court at Vista Chelsea Bridge Wharf is the first phase in this contemporary development (with residents' leisure facilities and 24 concierge) positioned next to Battersea Park, offering bright apartments with magnificent large windows and superb finishes, quality engineered timber flooring, kitchens with subtle satin finishes and beautiful stone work surfaces, high specification bathrooms and bedrooms with a fusion of subtle lighting, muted tones and soft carpeting.

The innovative and striking architecture has been conceived by world-leading architects Scott Brownrigg, to incorporate extensive outdoor landscaping and feature terraces whilst fitting into the beautiful surroundings of Battersea Park.

These are photographs of an identical flat for representation



These particulars, whilst believed to be accurate are set out as a general outline only for guidance and do not constitute any part of an offer or contract. Intending purchasers should not rely on them as statements of representation of fact, but must satisfy themselves by inspection or otherwise as to their accuracy. No person in this firm's employment has the authority to make or give any representation or warranty in respect of the property.