

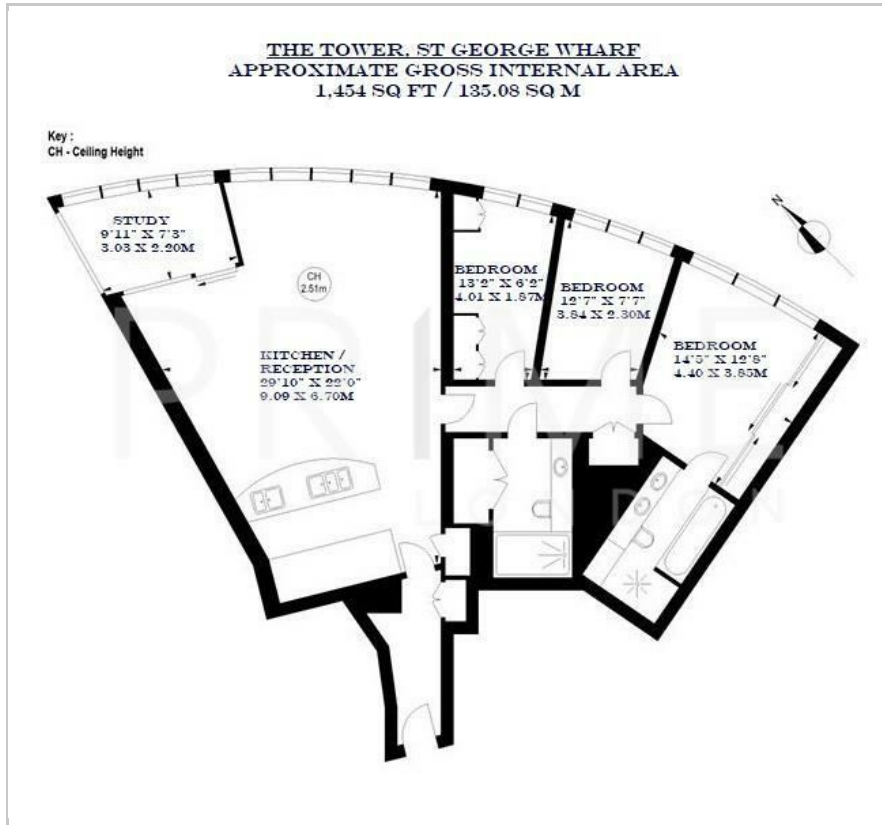
The Tower

One St. George Wharf, SW8 2BW

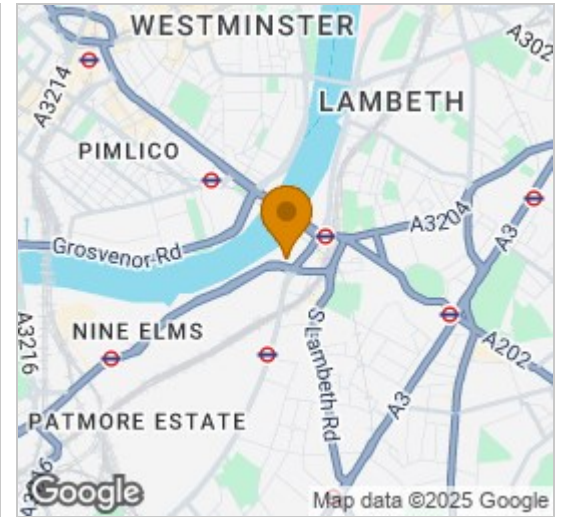
£4,100,000



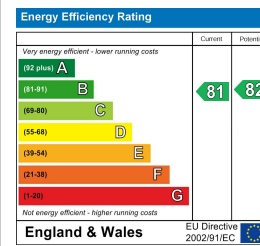
Floor Plan



Area Map



Energy Efficiency Graph



Viewing

By appointment. Contact us on 0207 928 6663 if you wish to arrange a viewing appointment for this property, or require further information.

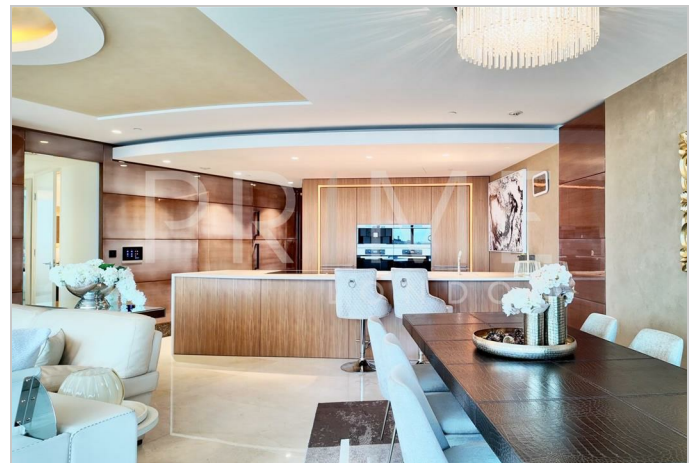
- Three-bedroom apartment
- Views of The River Thames
- 24 Hour concierge
- 1,454 sqft / 135.08 sqm
- Valet parking
- Gym, Pool and Sauna facilities

This exceptional three-bedroom apartment, located in a great position within the iconic St George Wharf Tower, offering excellent views of The River Thames and The City and with secure valet parking, is available for sale through Prime London.

This 1,454 sqft (135.08 sqm) features an excellent specification throughout including marble, glass and polished stone finishes. The apartment further benefits from its own sky garden balcony, comprehensive kitchen with Miele appliances, modern bathrooms and valet parking.

Amenities include front door concierge service, first floor gym, pool and sauna facilities as well as a private cinema. St George Wharf offers on site riverside bars and restaurants such as Waterfront London, The Riverside, Four Degree and Pop Art Sushi as well as direct access to Vauxhall Underground Station on the Victoria Line.

For additional convenience other on site outlets include Tesco Express, Pret a Manger, Hudson's Dry Cleaners, Riverside Medical Centre & Dental Spa and more.



These particulars, whilst believed to be accurate are set out as a general outline only for guidance and do not constitute any part of an offer or contract. Intending purchasers should not rely on them as statements of representation of fact, but must satisfy themselves by inspection or otherwise as to their accuracy. No person in this firm's employment has the authority to make or give any representation or warranty in respect of the property.