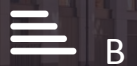


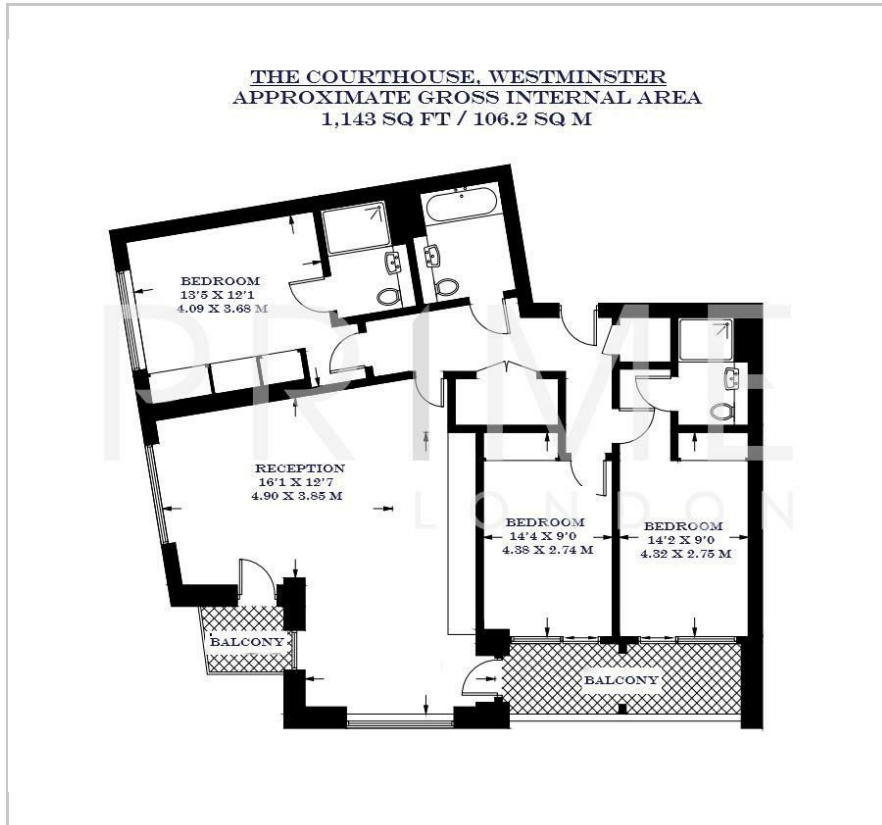
## The Courthouse

70 Horseferry Road, Westminster, SW1P 2FE

Asking Price £1,850,000



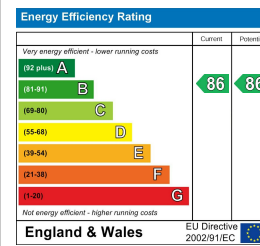
## Floor Plan



## Area Map



## Energy Efficiency Graph



## Viewing

By appointment. Contact us on 0207 052 1075 if you wish to arrange a viewing appointment for this property, or require further information.

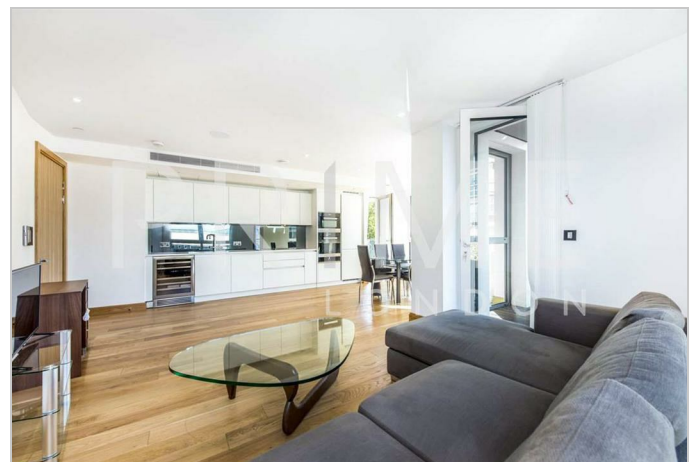
- Centrally located three bedroom apartment
- 1,143 sq ft (106.2 sqm)
- Generously sized balcony
- Residents' fitness centre and communal gardens
- Close proximity to St James Park and Westminster stations
- 24 hour concierge

A bright and luxurious three bedroom apartment, located in The Courthouse development in the heart of Westminster, is available for chain free sale through Prime London.

Totalling 1,143 sq ft (106.2 sqm), this property comprises of an open plan reception with a modern integrated kitchen, featuring floor to ceiling windows leading to a large balcony. A master bedroom with an en-suite, and two further double bedrooms and bathrooms.

Residents of The Courthouse benefit from a fitness centre, communal gardens and a 24 hour concierge.

Both St James Park (Circle and District lines) and Westminster (Jubilee line) Underground Stations are a short distance away.



These particulars, whilst believed to be accurate are set out as a general outline only for guidance and do not constitute any part of an offer or contract. Intending purchasers should not rely on them as statements of representation of fact, but must satisfy themselves by inspection or otherwise as to their accuracy. No person in this firm's employment has the authority to make or give any representation or warranty in respect of the property.