



## Christchurch Street

London, SW3 4AR

£5,000 Per Week





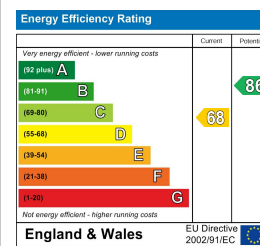
## Floor Plan



## Area Map



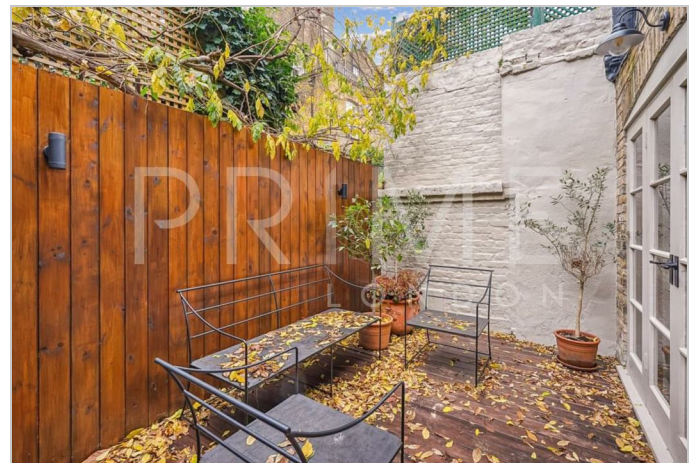
## Energy Efficiency Graph



## Viewing

By appointment. Contact us on 0207 052 1075 if you wish to arrange a viewing appointment for this property, or require further information.

- Three bedroom house
- 1,325 sq ft (123.1 sqm)
- Premium Chelsea location
- Bespoke built in storage throughout
- Ample outdoor space
- Short walk to the fashionable King's Road



**SHORT LET** - A beautifully presented three bedroom house, located in the heart of Chelsea, is available for short let through Prime London.

This charming property boasts approximately 1,325 sq ft (123.1 sqm) of meticulously designed living space, combining elegance with modern functionality. The interior features stunning wood flooring throughout, high ceilings, and thoughtfully curated finishes, creating a bright and airy ambiance.

The ground floor includes a sleek, fully integrated kitchen that opens onto a private terrace, perfect for alfresco dining or entertaining. The spacious reception room offers a warm and inviting space, ideal for both relaxing and hosting guests. Upstairs, the property comprises well-proportioned bedrooms and luxurious bathrooms, with the primary suite benefitting from bespoke built-in storage.

Positioned on Christchurch Street, the property enjoys an unparalleled location, just a short stroll from the boutique shops, fine dining, and vibrant atmosphere of Kings Road and Sloane Square. The historic Chelsea Physic Garden, within 0.2 miles, offers picturesque walks and a tranquil escape from the city.



These particulars, whilst believed to be accurate are set out as a general outline only for guidance and do not constitute any part of an offer or contract. Intending purchasers should not rely on them as statements of representation of fact, but must satisfy themselves by inspection or otherwise as to their accuracy. No person in this firm's employment has the authority to make or give any representation or warranty in respect of the property.