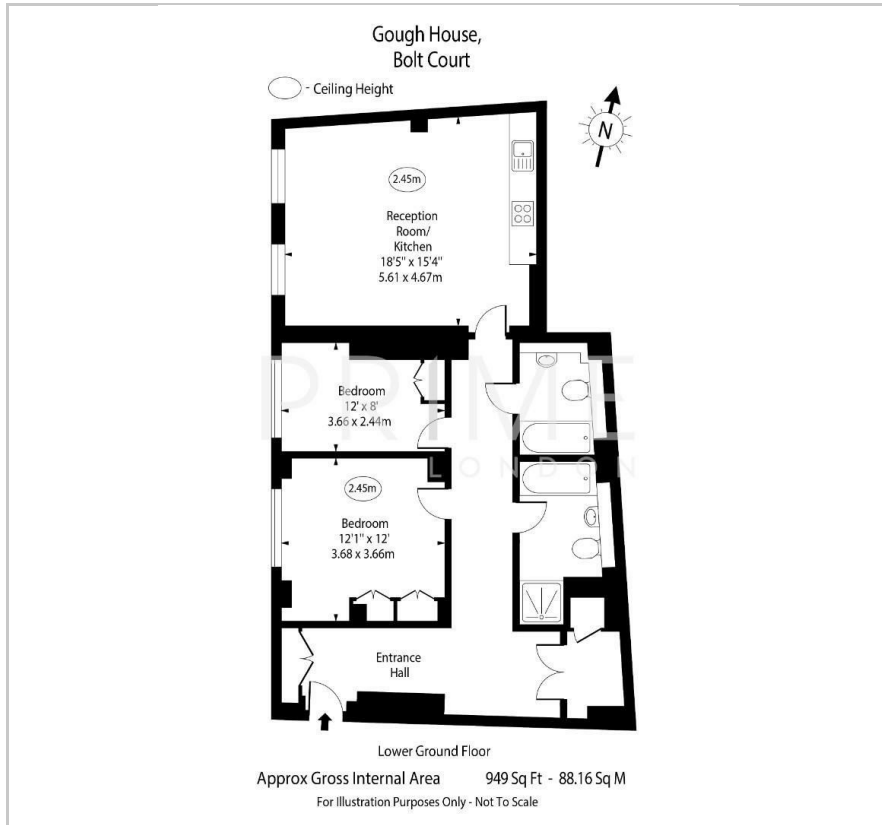




Gough House,
6 Bolt Court, London, EC4A 3DQ
£975,000



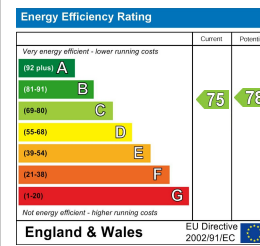
Floor Plan



Area Map



Energy Efficiency Graph



Viewing

By appointment. Contact us on 0207 928 6663 if you wish to arrange a viewing appointment for this property, or require further information.

- Meticulously interior designed apartment
- Situated in a Grade 2 listed designed apartment building
- Two bedroom apartment
- Chain free
- Day porter

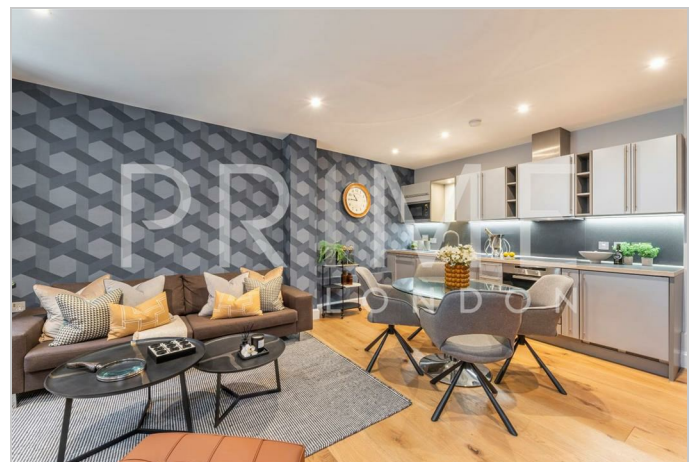
Situated in a Grade II Listed building, this spacious apartment offers an ideal home in central London.

Once a print works and college, the building has been elegantly transformed into a desirable residential complex. The apartment has been meticulously interior designed which boasts two generously sized bedrooms and two luxurious bathrooms. The expansive open-plan kitchen and living area is well-lit and perfect for entertaining.

The building features a video entry system and a weekday porter service from 8 am to 12 noon in the impressive oak-panelled lobby.

Bolt Court is conveniently close to the bars, restaurants, and theatres of Covent Garden and just a short walk from the tranquil green spaces of Lincoln's Inn Fields.

Chancery Lane, Temple, and Blackfriars underground stations are all nearby, providing excellent transport links across the capital.



These particulars, whilst believed to be accurate are set out as a general outline only for guidance and do not constitute any part of an offer or contract. Intending purchasers should not rely on them as statements of representation of fact, but must satisfy themselves by inspection or otherwise as to their accuracy. No person in this firm's employment has the authority to make or give any representation or warranty in respect of the property.