



## 18 Ennismore Gardens

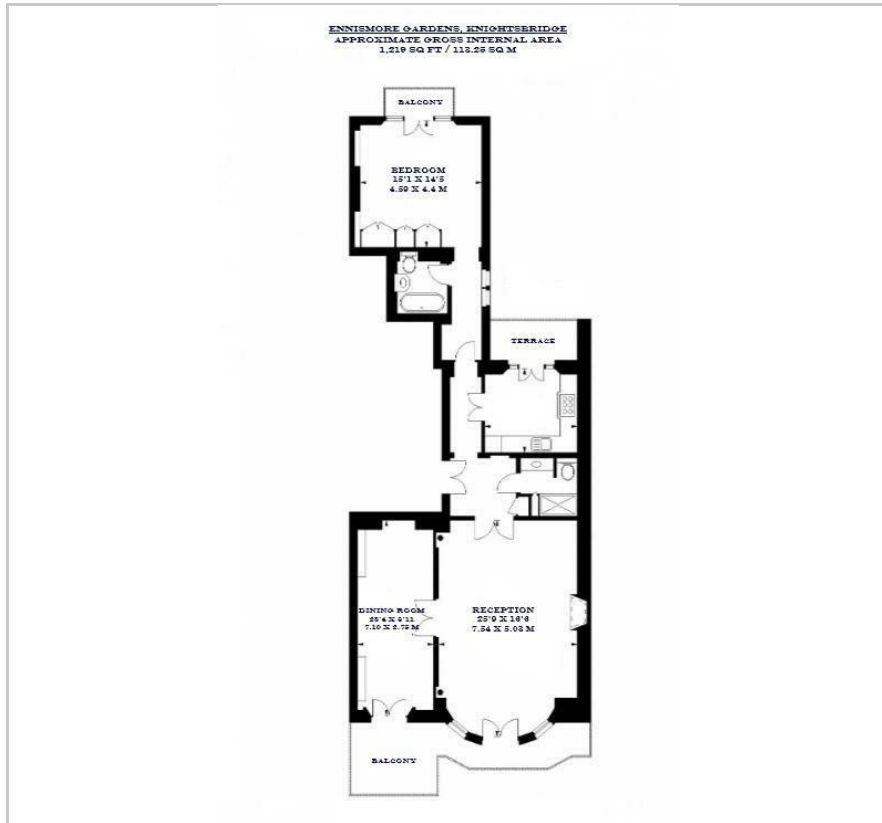
Knightsbridge, SW7 1AA

£1,845 Per Week





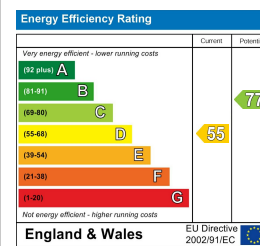
## Floor Plan



## Area Map



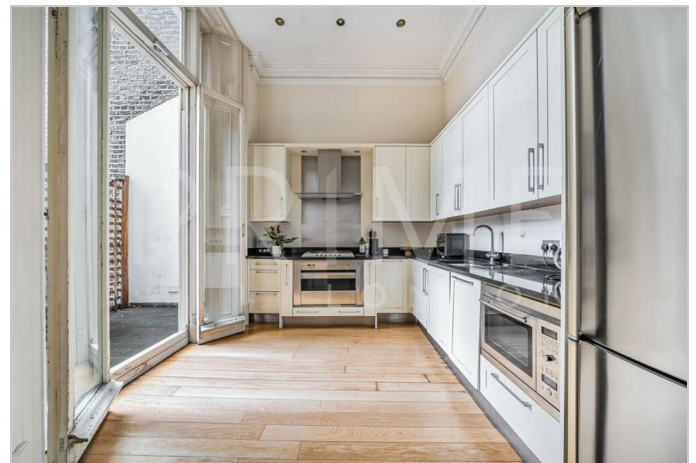
## Energy Efficiency Graph



## Viewing

By appointment. Contact us on 0207 052 1075 if you wish to arrange a viewing appointment for this property, or require further information.

- One bedroom apartment
- 1,219 sq ft (113.25 sqm)
- Nestled between Hyde Park and Brompton Road
- Modern, fully fitted kitchen
- Three private terraces
- Classic period detailing throughout

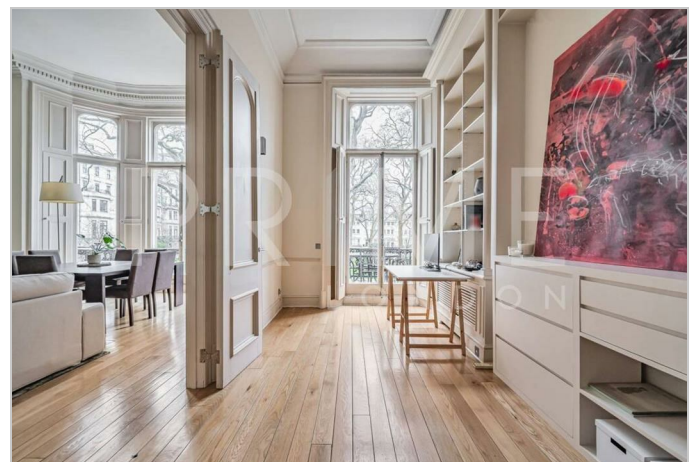


This exceptional one bedroom apartment, located in a period conversion in the prestigious Knightsbridge neighborhood, is available for lease through Prime London.

Offering approximately 1,219 sq ft (113.25 sqm) of beautifully designed living space, this property boasts a grand reception and dining room, featuring soaring ceilings, rich wood flooring, and classic period detailing, all bathed in natural light. A charming private balcony overlooks the serene communal gardens, providing an idyllic setting for relaxation.

The generously proportioned bedroom is complemented by two luxurious bathrooms finished to an impeccable standard. The modern, fully fitted kitchen not only provides sleek, high-end appliances but also benefits from direct access to a second terrace.

Ennismore Gardens is ideally positioned just moments from the lush open spaces of Hyde Park, offering a peaceful oasis in the heart of London. The world-class shopping, fine dining, and vibrant cultural scene of South Kensington and Brompton Road—home to the iconic Harrods—are just a short stroll away.



These particulars, whilst believed to be accurate are set out as a general outline only for guidance and do not constitute any part of an offer or contract. Intending purchasers should not rely on them as statements of representation of fact, but must satisfy themselves by inspection or otherwise as to their accuracy. No person in this firm's employment has the authority to make or give any representation or warranty in respect of the property.