

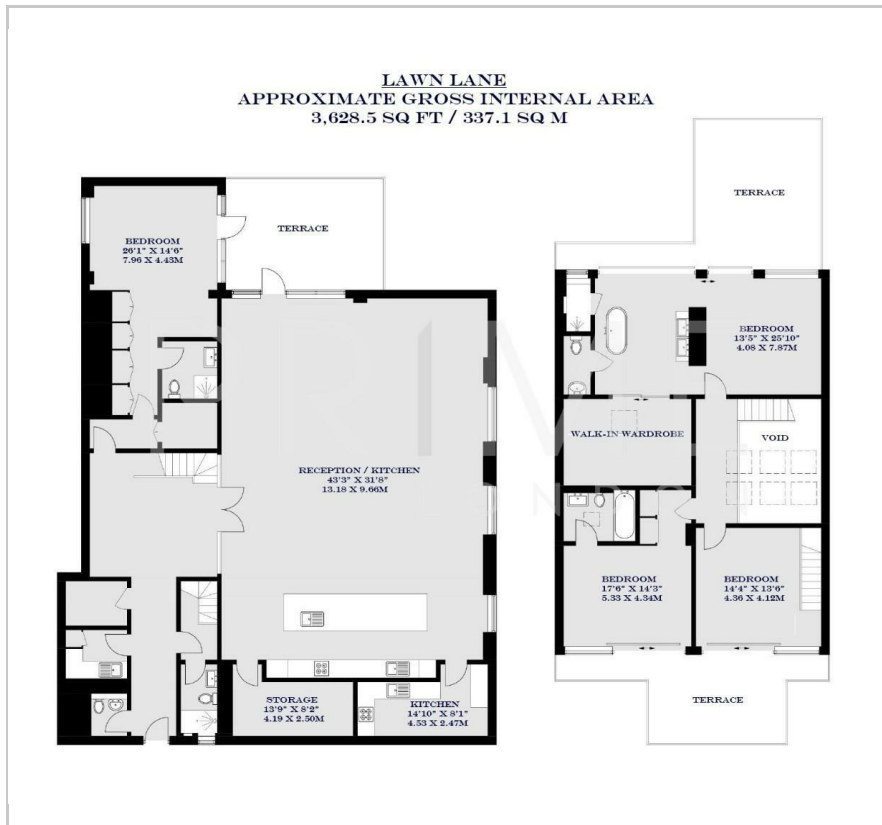


Lawn Lane

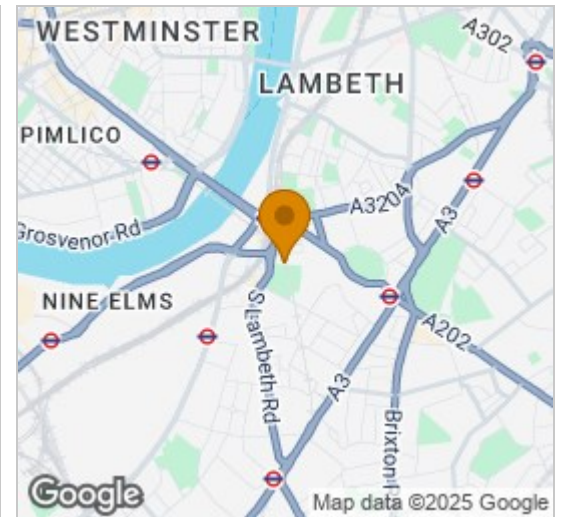
12 Lawn Lane, SW8 1UD

£7,450,000

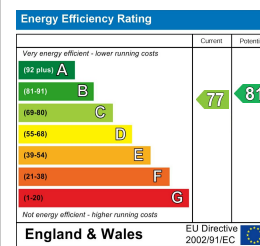
Floor Plan



Area Map



Energy Efficiency Graph



Viewing

By appointment. Contact us on 0207 928 6663 if you wish to arrange a viewing appointment for this property, or require further information.

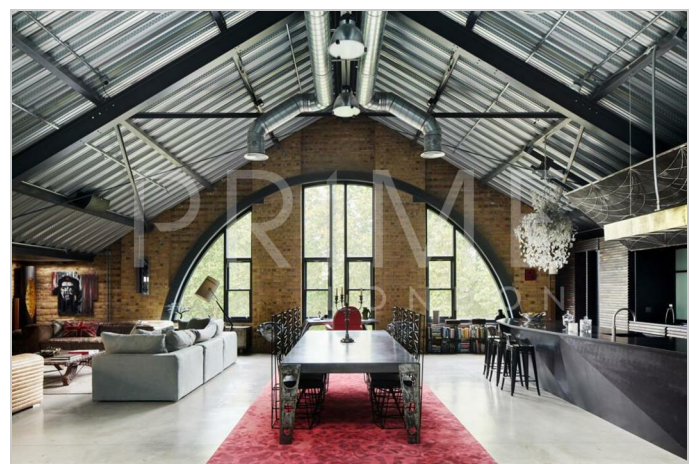
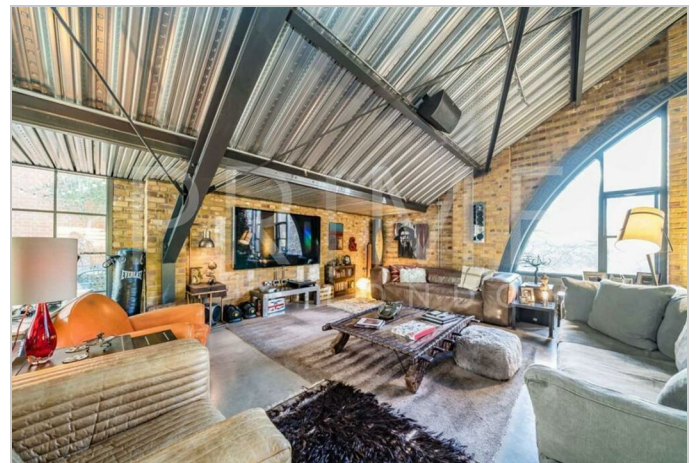
- Magnificent loft style
- Four bedrooms, four Bathrooms
- 3,628.5 sqft / 337.1 sqm
- Two parking spaces
- Three private roof terraces
- 24-hour concierge and lift access

This truly magnificent loft-style penthouse, and extraordinary residence in Embassy Works offers unparalleled industrial elegance with three expansive private terraces boasting views over Vauxhall Park is available for sale through Prime London.

Designed by acclaimed architects Foster Lomas, this one-of-a-kind home spans nearly 3,700 sq ft over two levels, boasting soaring vaulted ceilings, stunning bespoke interiors, and three private terraces. Entering on the third floor, a striking atrium hallway leads to an expansive open-plan kitchen and reception area with soaring 20ft ceilings and vast warehouse-style proportions and a hidden preparation kitchen. The main level features a spacious guest bedroom with rough-render walls, a porthole window to its ensuite shower room, and private roof terrace access.

A dramatic steel staircase leads to the upper floor, where three double bedrooms open onto private terraces. The principal suite includes a luxurious dressing room, semi open-plan ensuite with a handcrafted Estonian teak bath, Italian-tiled shower, double sinks, and a private terrace with city views. One bedroom has an ensuite bathroom, while the other enjoys a sleek shower room.

This penthouse exemplifies craftsmanship and modern convenience, offering acoustic insulation, air conditioning, Lutron lighting, and a weekday concierge service. Embassy Works, a grand warehouse conversion on Lawn Lane, is moments from Vauxhall Station, the River Thames, the American Embassy, Battersea Power Station, and the Houses of Parliament.



These particulars, whilst believed to be accurate are set out as a general outline only for guidance and do not constitute any part of an offer or contract. Intending purchasers should not rely on them as statements of representation of fact, but must satisfy themselves by inspection or otherwise as to their accuracy. No person in this firm's employment has the authority to make or give any representation or warranty in respect of the property.