

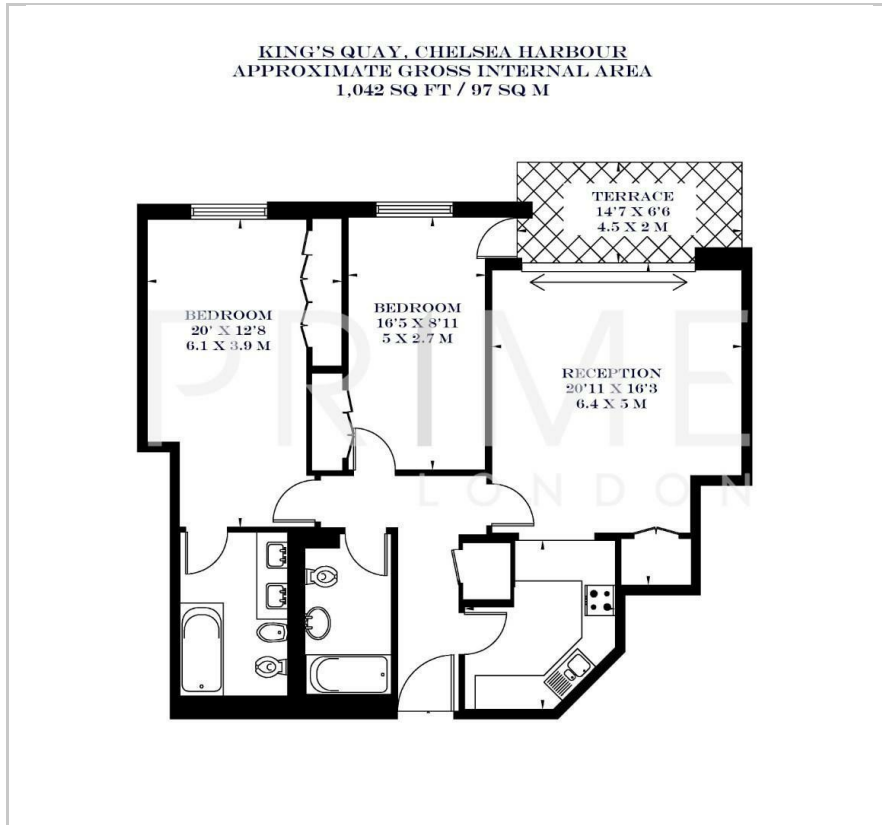


King's Quay

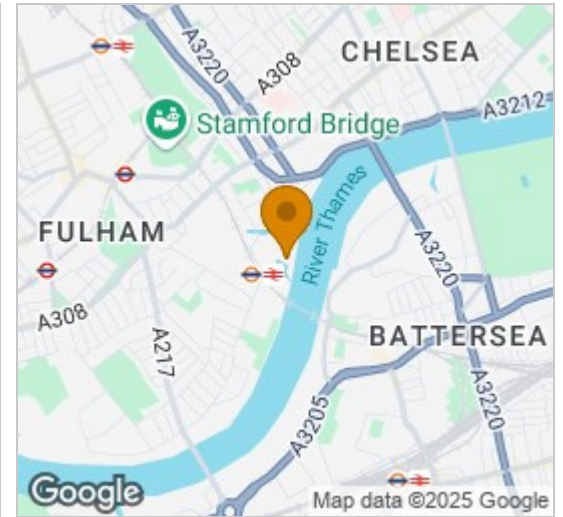
Chelsea Harbour, SW10 0UX

£876 Per Week

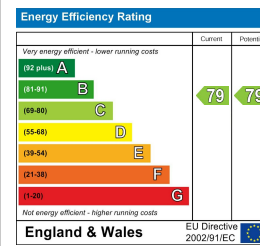
Floor Plan



Area Map



Energy Efficiency Graph



Viewing

By appointment. Contact us on 0207 052 1075 if you wish to arrange a viewing appointment for this property, or require further information.

- Two bedroom apartment
- Offering river views
- Furnished to a high standard
- 1,042 sq ft (97 sqm)
- Prime Chelsea location
- 24 hour concierge



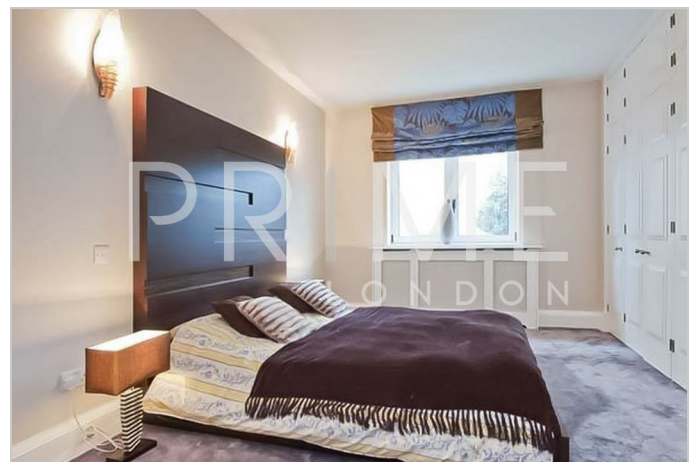
This beautifully presented two double bedroom apartment, situated within the highly sought-after Chelsea Harbour Development, is available for lease through Prime London.

Offering 1,042 sq ft (97 sqm), this stylish apartment offers spectacular views of the iconic harbour from a private terrace, allowing residents to enjoy a tranquil and picturesque setting right from their doorstep. The apartment is well-appointed with a large reception area, separate kitchen, and two bedrooms, one featuring an en-suite bathroom.

In addition, the property comes with the convenience of one underground parking space and access to a 24-hour concierge service, ensuring peace of mind and top-tier assistance whenever needed.

The property enjoys beautiful river views, enhancing the appeal of this already exceptional location. Within walking distance, you'll find a variety of shops, cafes, and fine dining options at both Imperial Wharf and King's Road.

Imperial Wharf station is just a short walk away, offering direct overground services to destinations such as Clapham Junction, West Brompton, and beyond.



These particulars, whilst believed to be accurate are set out as a general outline only for guidance and do not constitute any part of an offer or contract. Intending purchasers should not rely on them as statements of representation of fact, but must satisfy themselves by inspection or otherwise as to their accuracy. No person in this firm's employment has the authority to make or give any representation or warranty in respect of the property.