

## Merano Residences

30 Albert Embankment, SE1 7GS

Asking Price £1,670,000



2



2

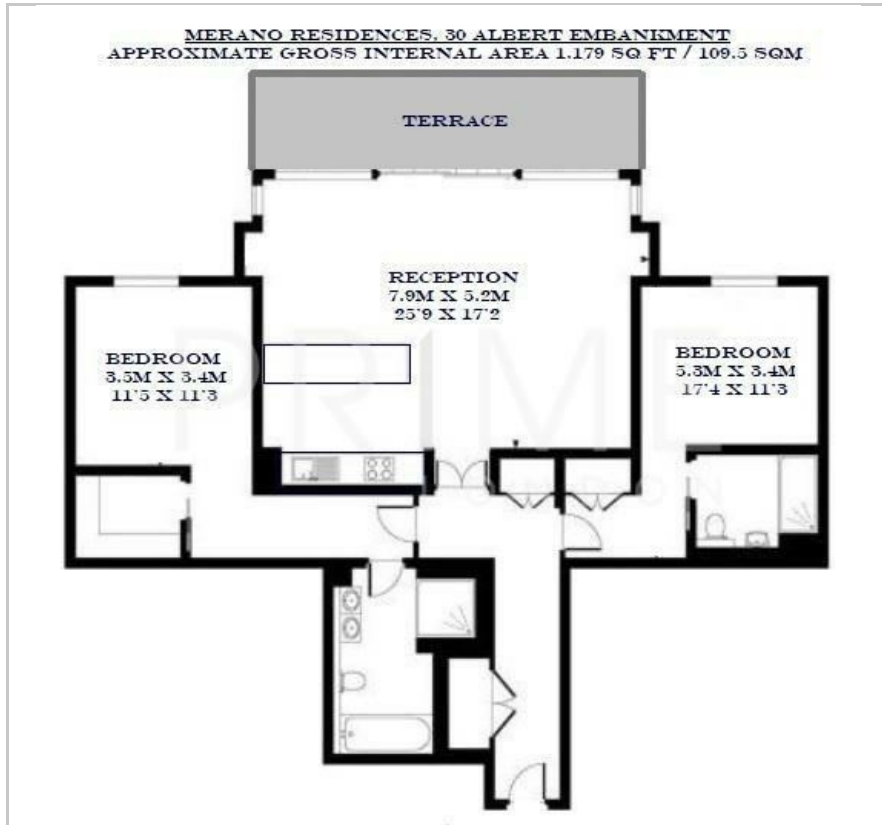


1

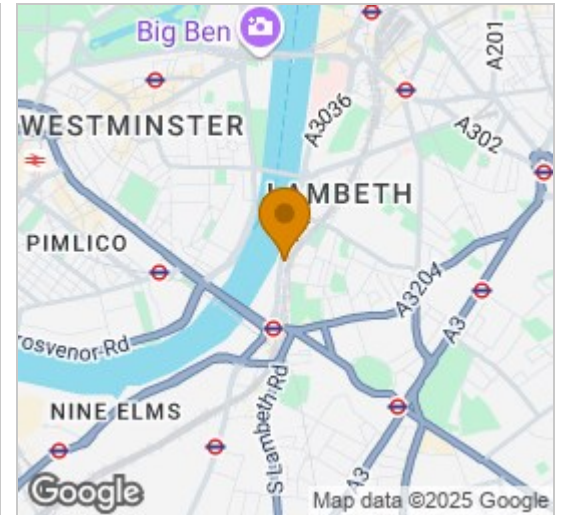


B

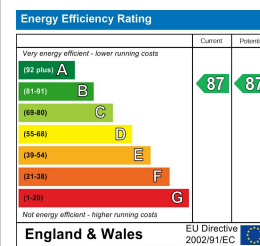
## Floor Plan



## Area Map



## Energy Efficiency Graph



## Viewing

By appointment. Contact us on 0207 928 6663 if you wish to arrange a viewing appointment for this property, or require further information.

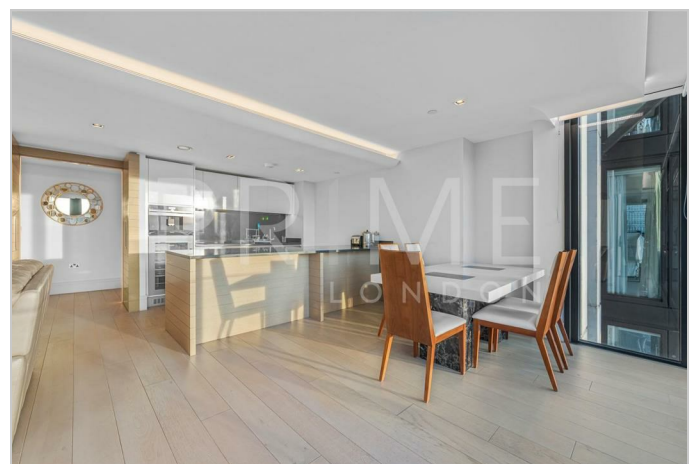
- Luxurious two bedroom two bathroom apartment
- Chain free
- Resident's sky garden
- Extraordinary views up and down the Thames
- 24 hour concierge

This high specification river facing two bedroom apartment with extraordinary views of the River Thames and Houses of Parliament and an internal space totalling 1,179 sq ft (109.5 sqm), is available for chain free sale through Prime London.

Set in the elegant Merano Residences, this spacious apartment benefits from having all rooms overlooking the River Thames. The property comprises a substantial open plan reception and kitchen with fully integrated Siemens appliances as well as floor to ceiling windows leading to a huge private balcony, two equal double bedrooms, both with built in storage and en suite bathrooms, plenty of further storage in the hallway.

An elegant double-height lobby marks the entrance to Merano, home to an integrated 24-hour concierge and lifestyle management service.

The private sky garden at Merano sits 140ft above the river and city beneath, a space that enjoys daylong sunlight and affords spectacular views across the heart of London.



These particulars, whilst believed to be accurate are set out as a general outline only for guidance and do not constitute any part of an offer or contract. Intending purchasers should not rely on them as statements of representation of fact, but must satisfy themselves by inspection or otherwise as to their accuracy. No person in this firm's employment has the authority to make or give any representation or warranty in respect of the property.