

## Sky Gardens

155 Wandsworth Road, Vauxhall, SW8 2FZ

£545,000



1



1

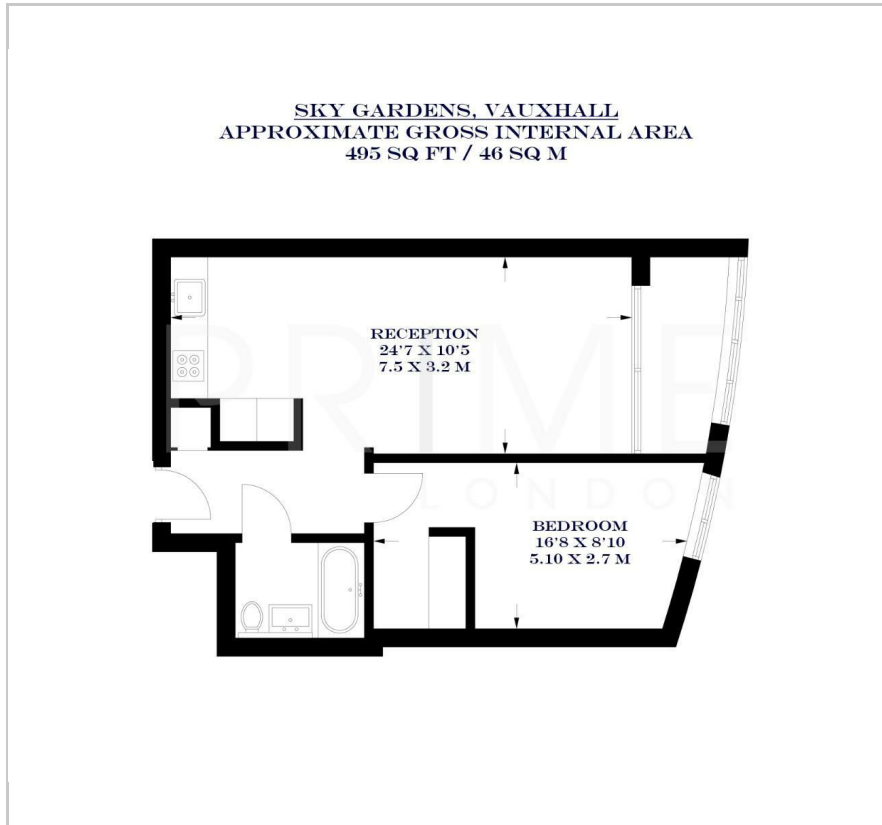


1

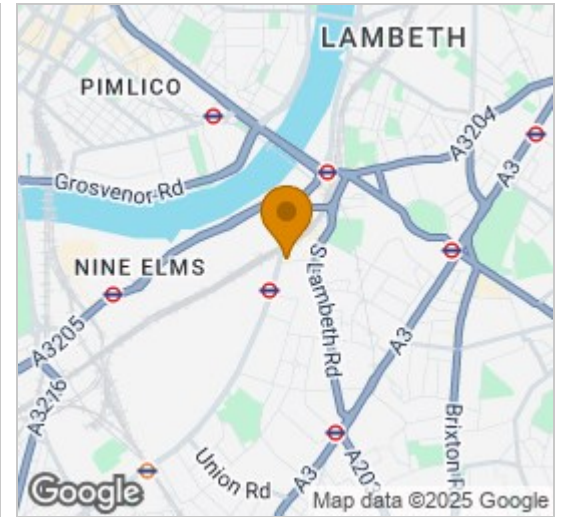


B

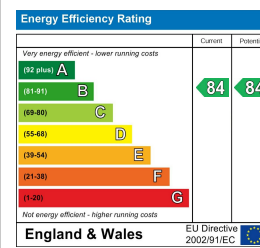
## Floor Plan



## Area Map



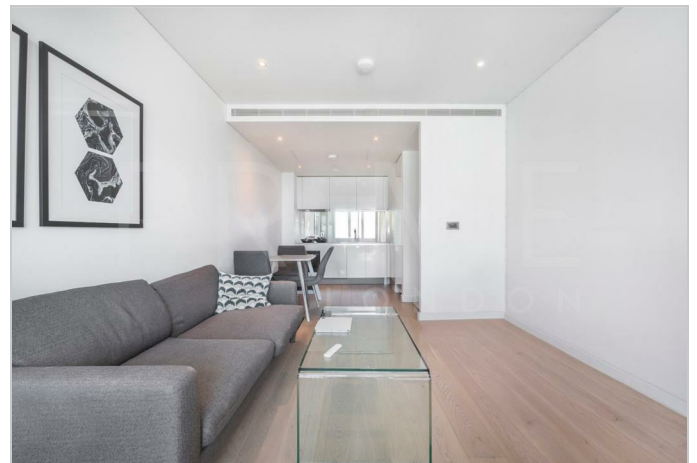
## Energy Efficiency Graph



## Viewing

By appointment. Contact us on 0207 928 6663 if you wish to arrange a viewing appointment for this property, or require further information.

- One bedroom apartment
- 495 sq ft (46 sqm)
- Winter garden
- Residents' gym and roof garden
- Short walk to Vauxhall Underground and Rail Station
- 24 hour concierge



This bright and spacious one-bedroom apartment in the highly sought-after Sky Gardens development, located in Vauxhall, is available for sale chain-free through Prime London.

Spanning 495 sq ft (46 sqm), the property features an open-plan reception area with a fully fitted kitchen, leading to a winter garden. It also includes a well-proportioned bedroom, with a dressing area, and a stylish bathroom, with comfort cooling and underfloor heating throughout.

Residents of Sky Gardens benefit from a state-of-the-art gym on the eighth floor, a 24-hour concierge service, and an impressive rooftop garden on the thirty-fourth floor.

Ideally situated for transport links, Sky Gardens offers easy access to Vauxhall Station's rail, tube, bus, and river taxi services. Nearby amenities include Waitrose, Sainsbury's, Argos, Starbucks, and the diverse dining options at St George Wharf.



These particulars, whilst believed to be accurate are set out as a general outline only for guidance and do not constitute any part of an offer or contract. Intending purchasers should not rely on them as statements of representation of fact, but must satisfy themselves by inspection or otherwise as to their accuracy. No person in this firm's employment has the authority to make or give any representation or warranty in respect of the property.