

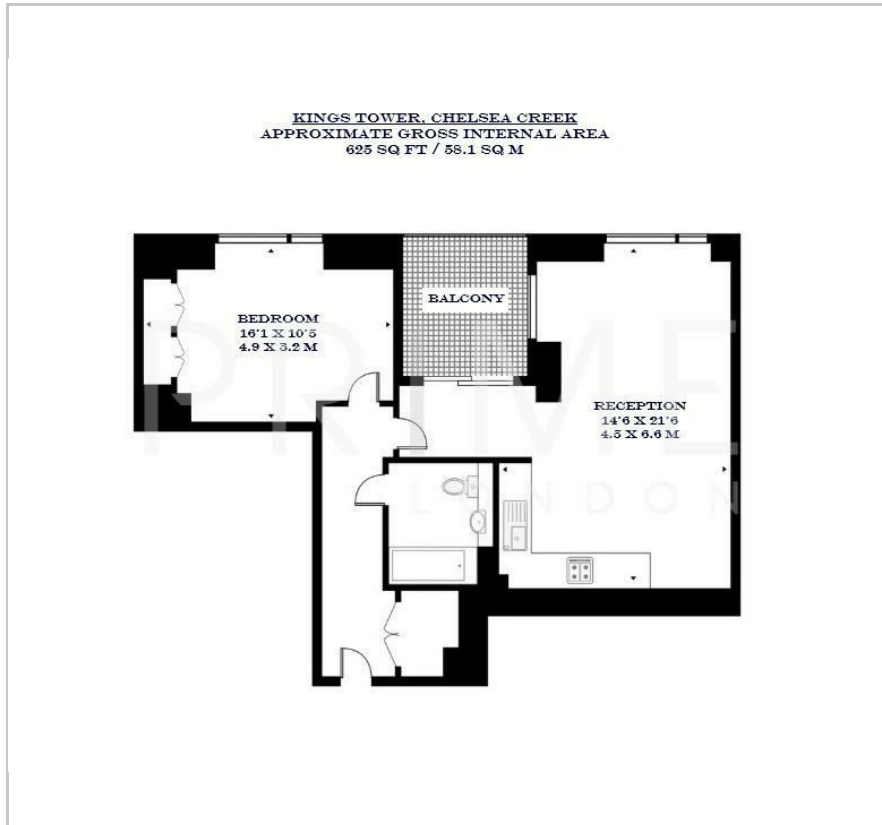
Kings Tower

2 Bridgewater Avenue, Chelsea Creek, SW6 2FZ

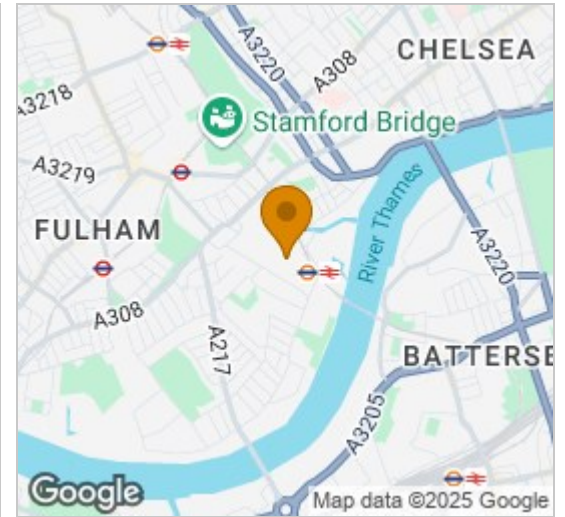
£850,000



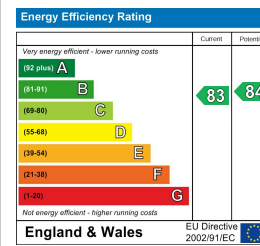
Floor Plan



Area Map



Energy Efficiency Graph



Viewing

By appointment. Contact us on 0207 052 1075 if you wish to arrange a viewing appointment for this property, or require further information.

- One bedroom apartment
- 625 sq ft (58.1 sqm)
- Private balcony offering beautiful views
- Residents' pool, gym, treatment room and cinema
- Just 0.1 miles to Imperial Wharf
- 24 hour concierge

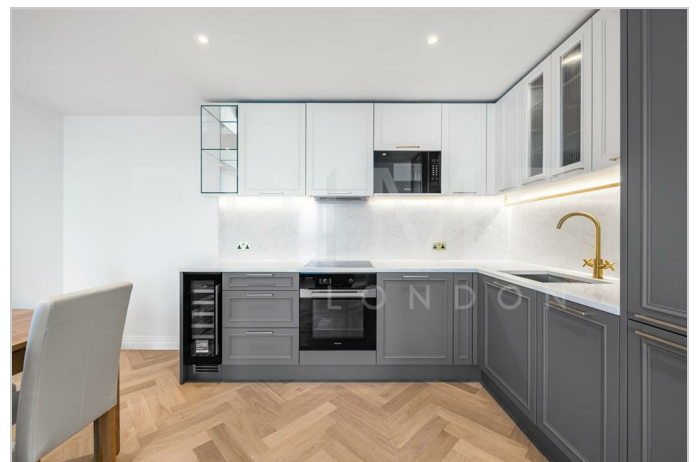


This beautifully designed one-bedroom apartment, located in Kings Tower at the prestigious Chelsea Creek development, is available for chain-free sale through Prime London.

Offering 625 sq ft (58.1 sqm) of living space, the property features a bright and airy open-plan reception room, complete with herringbone flooring, floor-to-ceiling windows, and access to a private balcony that creates a seamless indoor-outdoor feel. The sleek kitchen is fully fitted with high-spec appliances and smart storage solutions, while the spacious bedroom includes spacious custom-built wardrobes and a dedicated workspace by the window.

Residents enjoy exclusive access to the Halcyon Club, a world-class facility with a fully equipped fitness centre, swimming pool, spa with sauna and steam room, private cinema, and meeting room. Additionally, the 31st-floor sky lounge and terrace offer breathtaking panoramic views of the city.

Located within the sought-after Chelsea Creek development, the apartment is conveniently close to transport links, shops, and restaurants, with Imperial Wharf station just a stone's throw away.



These particulars, whilst believed to be accurate are set out as a general outline only for guidance and do not constitute any part of an offer or contract. Intending purchasers should not rely on them as statements of representation of fact, but must satisfy themselves by inspection or otherwise as to their accuracy. No person in this firm's employment has the authority to make or give any representation or warranty in respect of the property.