



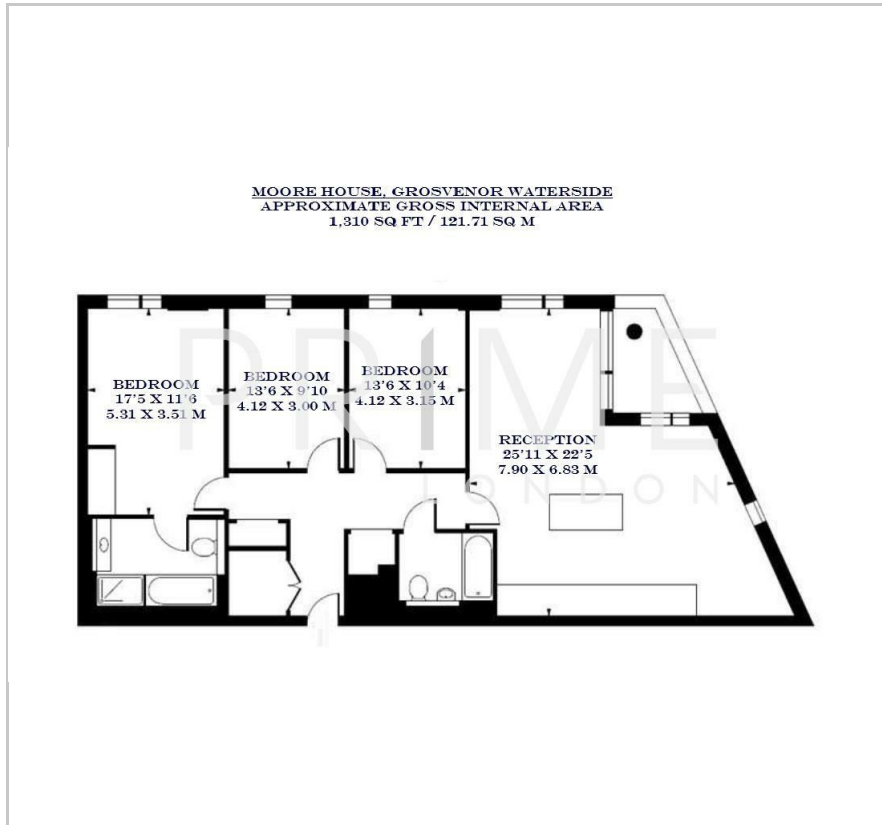
## Moore House

Grosvenor Waterside, 2 Gatliff Road, SW1W 8DU

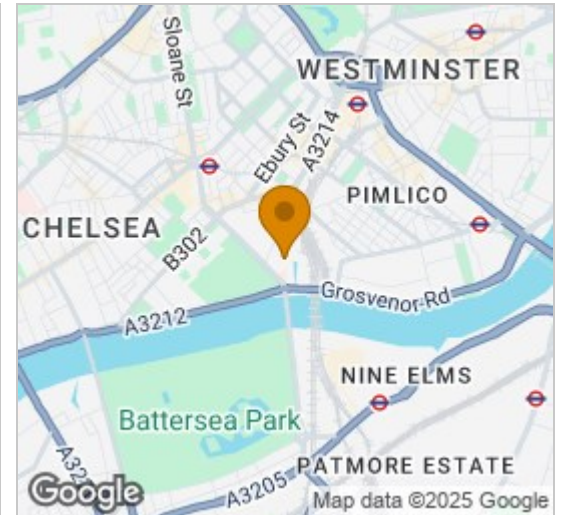
£1,442 Per Week



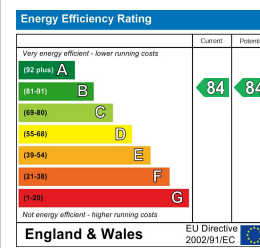
## Floor Plan



## Area Map



## Energy Efficiency Graph



## Viewing

By appointment. Contact us on 0207 052 1075 if you wish to arrange a viewing appointment for this property, or require further information.

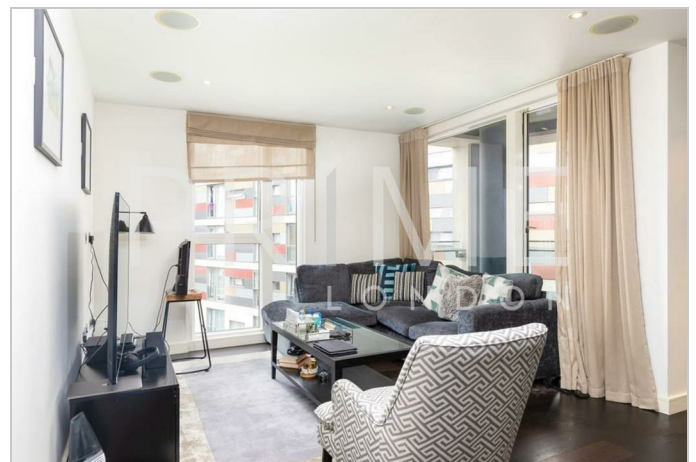
- Three bedroom apartment
- 1,310 sq ft (121.71 sqm)
- Wooden flooring
- Newly refurbished resident's facilities
- Short walk to Battersea Power Station
- 24 hour concierge

This bright and modern three bedroom apartment, in the highly sought-after Grosvenor Waterside, development is available for lease through Prime London.

Spanning 1,310 sq ft (121.71 sqm), the property features an open-plan reception area that opens onto a private balcony. The fully fitted kitchen features a sleek island, enhancing the open layout and creating a central hub for cooking and dining. The master bedroom features an en-suite bathroom, and there are an additional two bedrooms, with access to a modern family bathroom.

Residents of Grosvenor Waterside enjoy access to a newly refurbished gym, spa, and 24-hour concierge services.

Located on the north side of the river by Chelsea Bridge, the apartment is close to the open spaces of Battersea Park. Victoria mainline and underground station (Victoria, Circle, and District lines, zone 1) are nearby, and Grosvenor Waterside is just half a mile from Sloane Square underground station, with Kings Road's fashionable shops within easy walking distance.



These particulars, whilst believed to be accurate are set out as a general outline only for guidance and do not constitute any part of an offer or contract. Intending purchasers should not rely on them as statements of representation of fact, but must satisfy themselves by inspection or otherwise as to their accuracy. No person in this firm's employment has the authority to make or give any representation or warranty in respect of the property.