



Huntington House

Prince of Wales Drive, SW11 4EJ

Offers In Excess Of £625,000



1



1

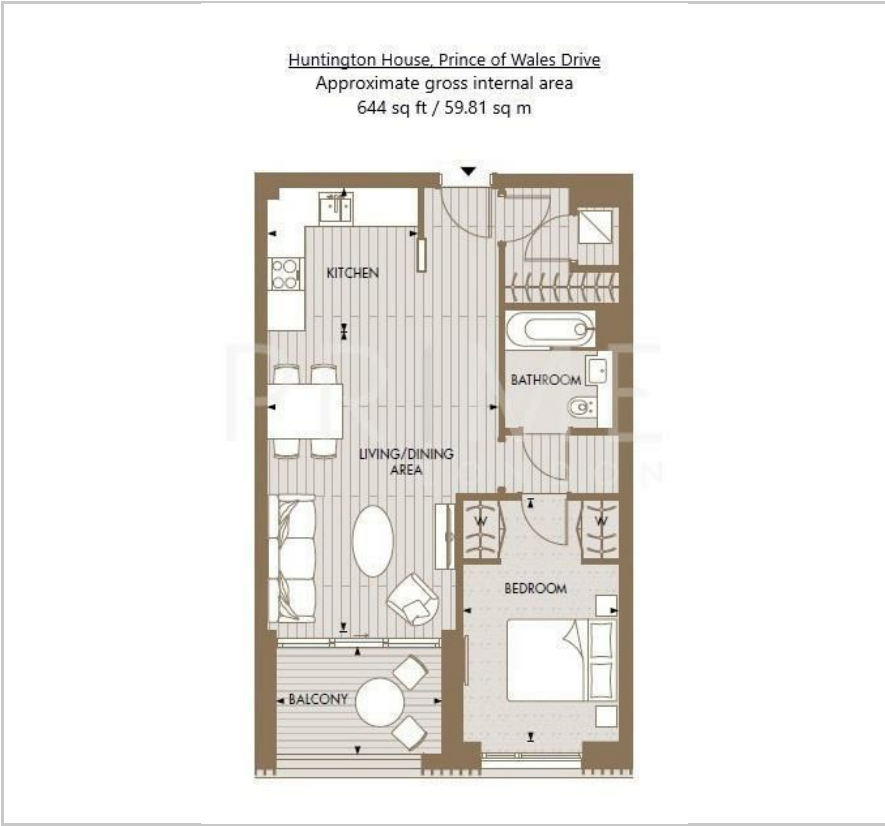


1

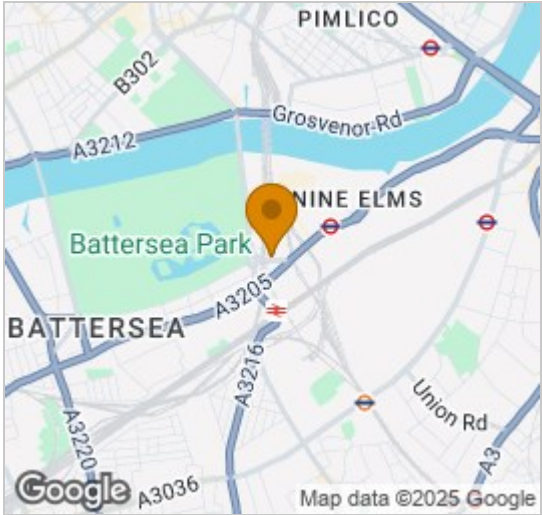


B

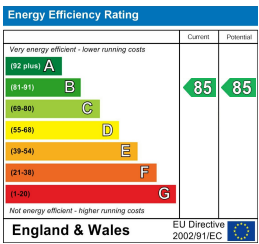
Floor Plan



Area Map



Energy Efficiency Graph



Viewing

By appointment. Contact us on 0207 928 6663 if you wish to arrange a viewing appointment for this property, or require further information.

- Modern one bedroom ■ 644 sq ft (59.81 sqm) apartment
- Chain free
- Close to the new Northern Line Zone 1 tube station
- 17m pool, sauna, steam ■ 24 hour concierge room, and roof terrace

This modern one bedroom apartment, with private balcony, set in a great position within Huntington House, is available for chain free sale through Prime London.

Offering 644 sq ft (59.81 sqm) of living space, the property comprises a spacious open plan living area with a fully integrated kitchen, which leads onto a private balcony, a double bedroom with fitted wardrobes, a family bathroom with bathtub, and a large storage and utility space.

Residents within the development further benefit from a 24 hour concierge, residents roof terrace, swimming pool, sauna and steam room.

Conveniently located moments from Battersea Park, a short stroll over the Thames to Chelsea, adjacent to the iconic Battersea Power Station.

Prince of Wales Drive benefits from the heritage of the old and the delights of the new. Conveniently located for both Queenstown Road and Battersea Park Overground Stations, offering direct connections to Waterloo and Victoria.



These particulars, whilst believed to be accurate are set out as a general outline only for guidance and do not constitute any part of an offer or contract. Intending purchasers should not rely on them as statements of representation of fact, but must satisfy themselves by inspection or otherwise as to their accuracy. No person in this firm's employment has the authority to make or give any representation or warranty in respect of the property.