



The Knightsbridge Apartments, Knightsbridge, SW7 1RH

£6,000 Per Week





£6,000 Per Week

The Knightsbridge Apartments

Knightsbridge, SW7 1RH

- Three bedroom apartment
- Generous private balcony
- Short stroll from Knightsbridge underground station
- 1,598 sq ft (148.5 sqm)
- Residents' gym, pool, spa and communal garden
- 24 hour concierge

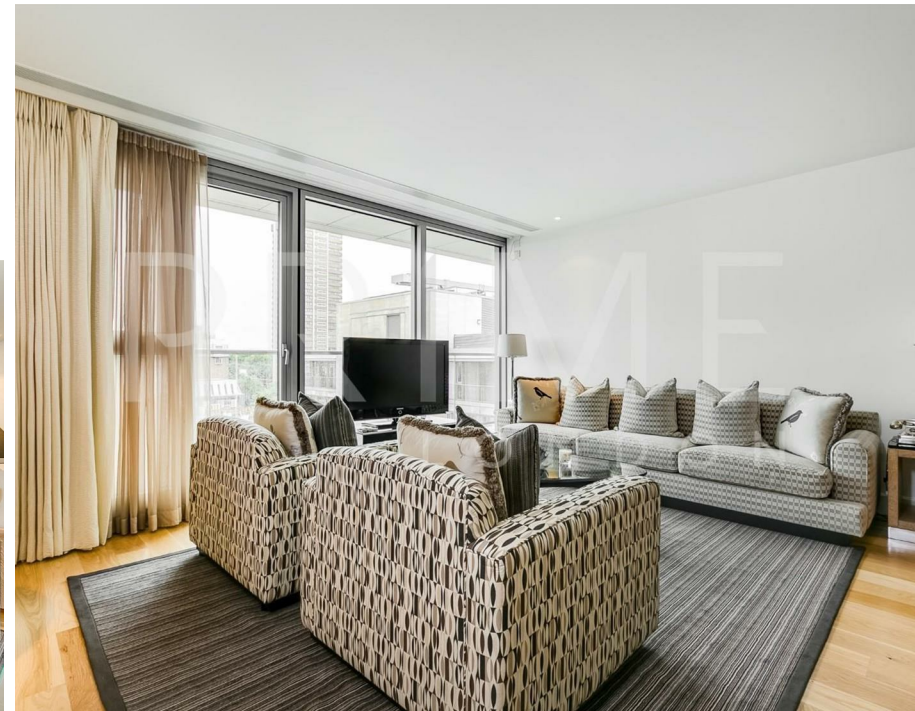
This luxurious three bedroom apartment, located in the prestigious Knightsbridge Apartments, is available now for lease through Prime London.

This exquisite lateral apartment, spanning 1,598 sq ft (148.5 sqm), boasts a spacious and elegantly designed reception and dining area. The separate modern kitchen is fully fitted with high-end appliances. There are three well-proportioned double bedrooms, each offering built-in storage, while the master suite enjoys the added luxury of floor-to-ceiling windows, flooding the space with natural light and providing direct access to a private balcony with stunning views.

Residents of The Knightsbridge Apartments benefit from exceptional amenities, including a 24-hour concierge, a luxurious spa, a state-of-the-art gym, and an indoor swimming pool.

Knightsbridge Underground Station (Piccadilly Line) is just a short walk away, offering transport links across London.

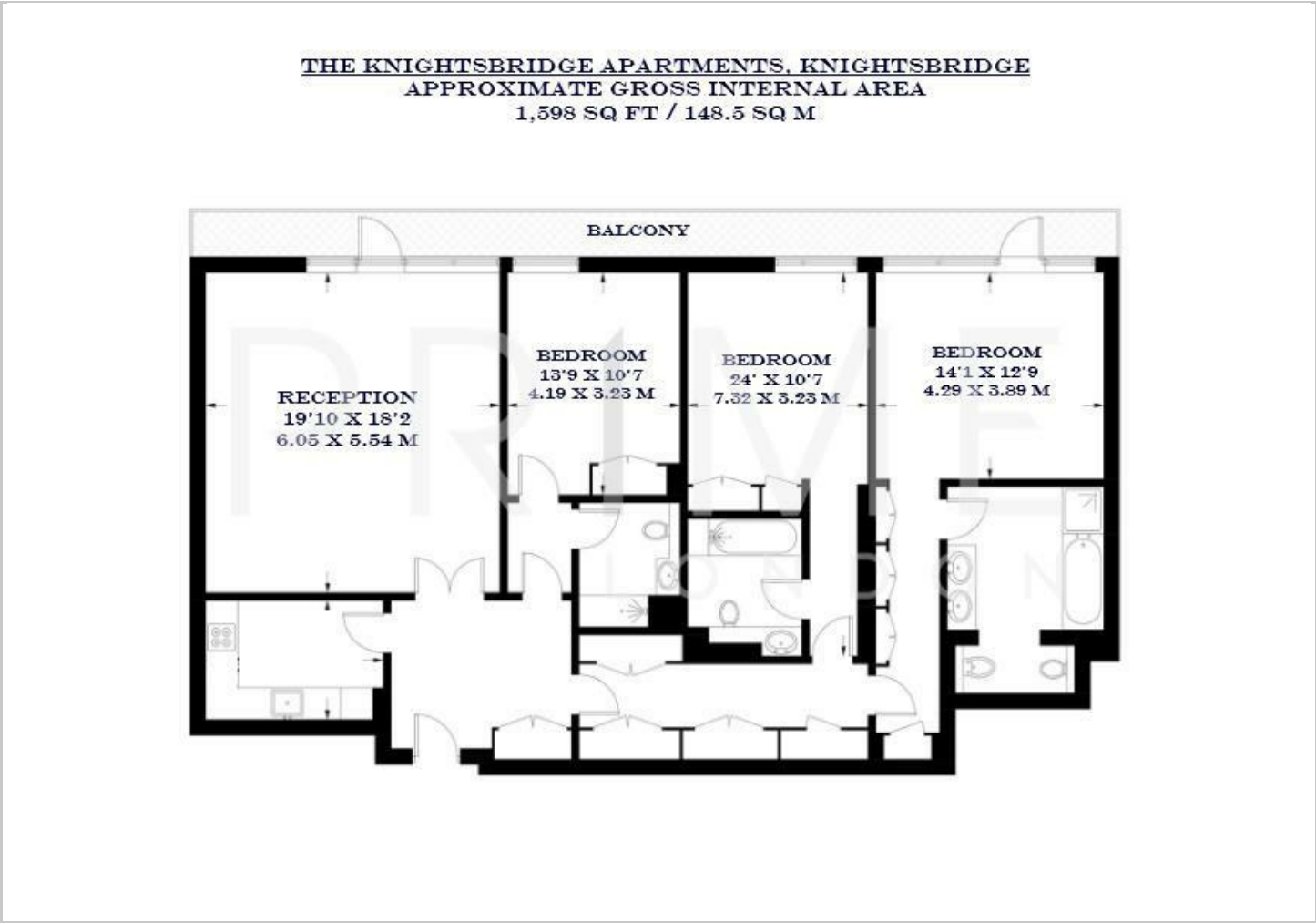
The area is also home to world-renowned shopping destinations, including Harrods and Harvey Nichols, as well as an array of fine dining establishments and cultural landmarks.







Floor Plans

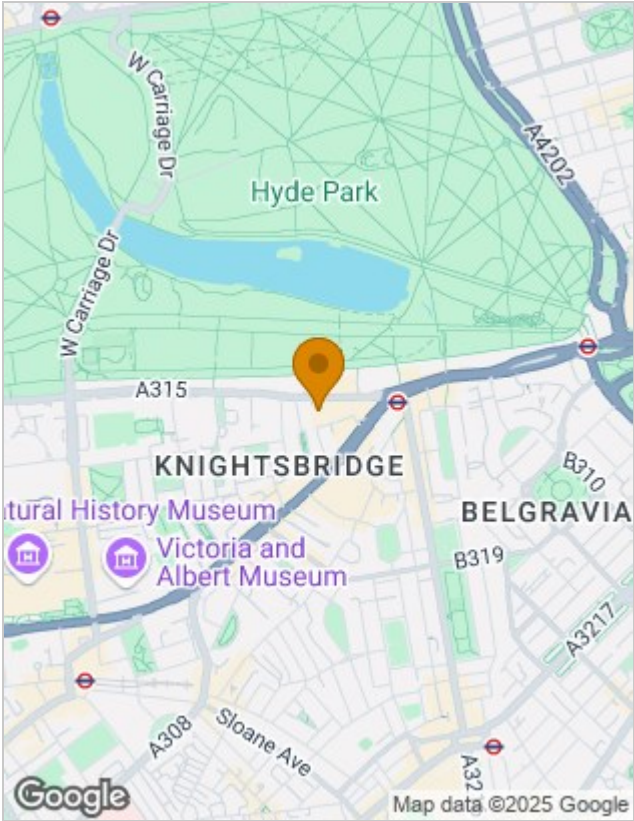


Viewing

By appointment. Contact us if you wish to arrange a viewing appointment for this property, or require further information.

The particulars are set out as a general outline only for the guidance of intended purchasers or lessees, and do not constitute, any part of a contract. Nothing in these particulars shall be deemed to be a statement that the property is in good structural condition or otherwise nor that any of the services, appliances, equipment or facilities are in good working order. Purchasers should satisfy themselves of this prior to purchasing.

Location Map



Energy Performance Graph

