



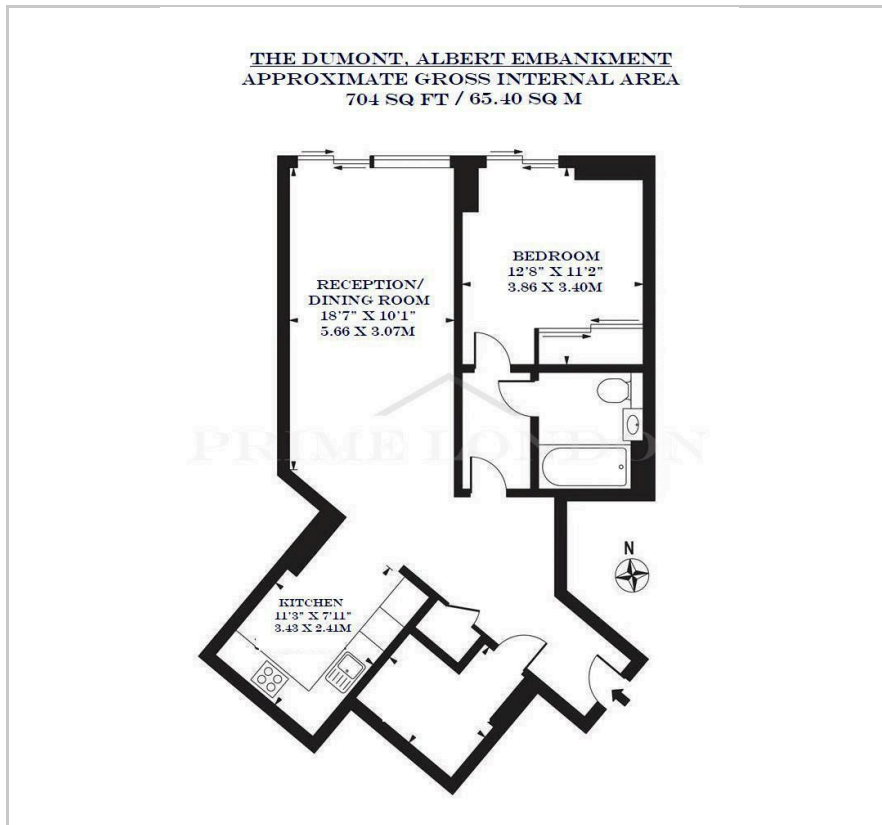
The Dumont

27 Albert Embankment, SE1 7AP

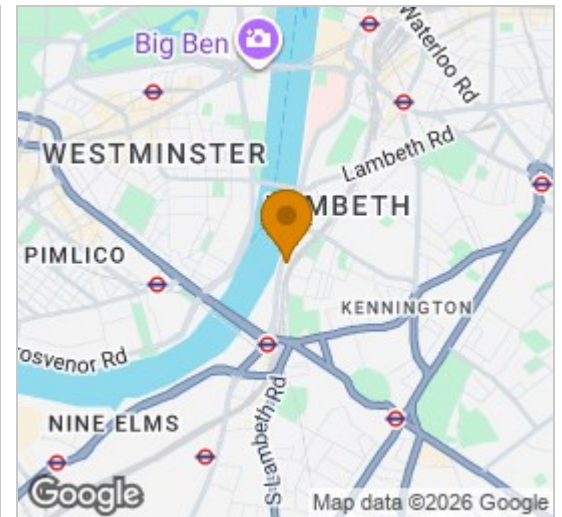
£773 Per Week



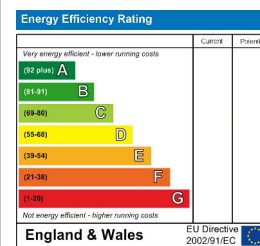
Floor Plan



Area Map



Energy Efficiency Graph



Viewing

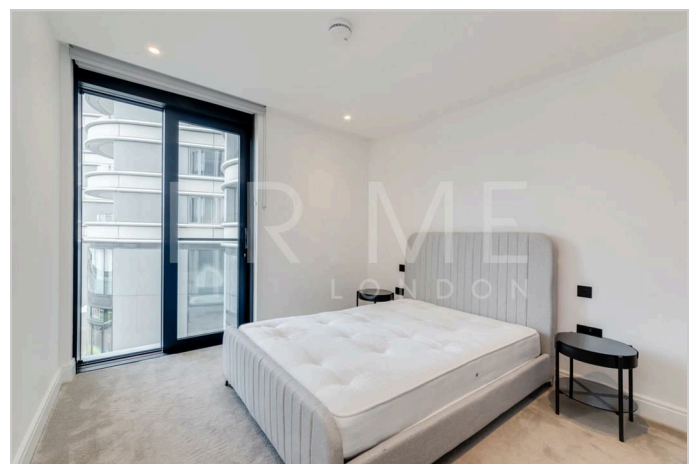
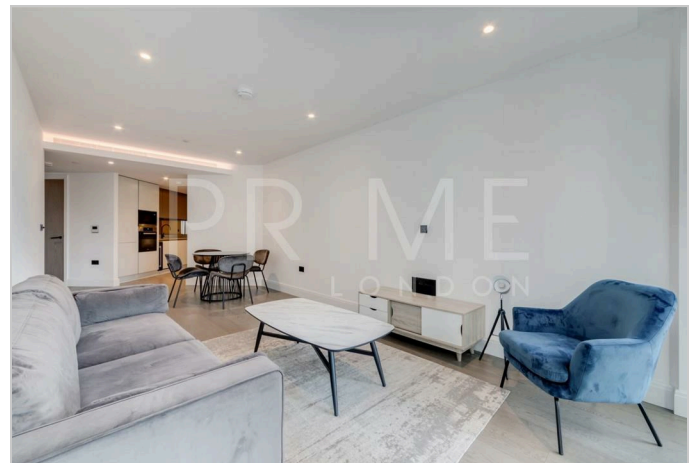
By appointment. Contact us on 0207 928 6663 if you wish to arrange a viewing appointment for this property, or require further information.

- Modern one bedroom ▪ 704 sq ft (65.4 sqm) apartment
- Views of River Thames and Houses of Parliament
- Infinity pool, gym and spa facilities
- Twelfth floor residents' lounge
- 24 hour concierge

This elegantly finished, large one bedroom apartment of 704 sq ft (65.4 sqm), with direct views of the River Thames and Houses of Parliament, is available for lease within The Dumont through Prime London.

Facilities include ten pin bowling & games room, twelfth floor residents' lounge, dining room and roof terrace, 24 hour concierge and an infinity pool, gym and spa facilities located in The Corniche. The building also benefits from exquisite views across one of the most famous stretches of the river, including the Houses of Parliament, the London Eye and The City.

The Dumont completes the St James' trio of buildings on the Albert Embankment, situated between the cultural South Bank and the new Embassy District of Nine Elms.



These particulars, whilst believed to be accurate are set out as a general outline only for guidance and do not constitute any part of an offer or contract. Intending purchasers should not rely on them as statements of representation of fact, but must satisfy themselves by inspection or otherwise as to their accuracy. No person in this firm's employment has the authority to make or give any representation or warranty in respect of the property.