

Meranti House

84 Alie Street, Goodman's Fields, E1 8QB

£1,061



MERANTI HOUSE, GOODMAN'S FIELDS
APPROXIMATE GROSS INTERNAL AREA
894 SQ FT / 83 SQ M

BALCONY
17'3" X 5'9"
5.25 X 1.75M

LIVING AREA
18'6" X 14'7"
5.63 X 4.45M

BEDROOM
13'5" X 11'2"
4.09 X 3.40M

BEDROOM
24'11" X 10'5"
7.60 X 3.18M

A map of the Whitechapel area in London. The map shows the River Thames at the bottom, with the Tower Bridge visible. Major roads include A10, A1209, A107, A11, and A1203. The area is divided into SPITALFIELDS, WHITECHAPEL, CITY OF LONDON, and SHADWELL. A red pin is located in the Whitechapel area, near the intersection of A11 and A1203. The map also shows the location of The Shard and Cable St. The Google logo is in the bottom left corner, and the text 'Map data ©2025 Google' is in the bottom right corner.

| Energy Efficiency Rating | | Current | Potential |
|---------------------------------------------|--|---------|-----------|
| Very energy efficient - lower running costs | | | |
| (92 plus) A | | 84 | 84 |
| (81-91) B | | | |
| (69-80) C | | | |
| (55-68) D | | | |
| (39-54) E | | | |
| (21-38) F | | | |
| (1-20) G | | | |
| Not energy efficient - higher running costs | | | |

England & Wales EU Directive 2002/91/EC

By appointment. Contact us on 0207 928 6663 if you wish to arrange a viewing appointment for this property, or require further information.

- Two bedroom apartment
- Private balcony
- 24 hour concierge
- 894 sq ft (83 sqm)
- Fully furnished
- Gym, swimming pool and cinema room

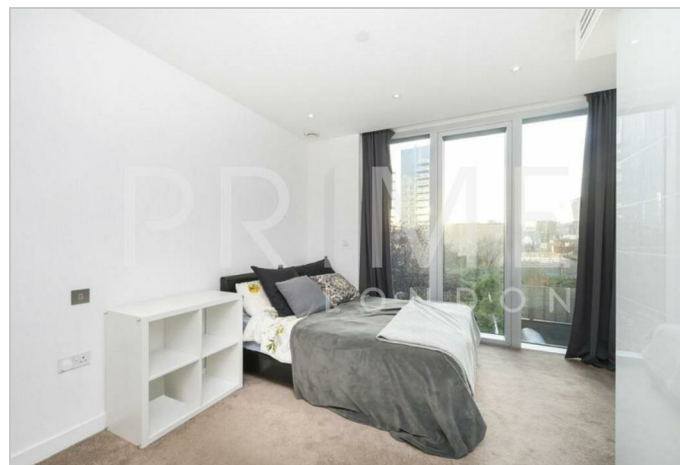
This beautifully furnished two-bedroom apartment, in the luxury Goodman's Fields development, is available to let through Prime London.

This exceptional apartment combines elegance with modern living and features a spacious balcony that offers stunning views of the City and Wharf. The apartment boasts a high-specification open-plan kitchen that is fully fitted with premium appliances, including a dishwasher, induction cooker, and wine cooler, while a dedicated walk-in wardrobe adds a touch of luxury.

The bright and airy reception offers sleek wooden flooring throughout the living area and opens onto a private terrace. The apartment has two generously sized double bedrooms, including a stylish ensuite, along with a contemporary main bathroom and an additional W/C.

Residents of Meranti House have exclusive access to a range of five-star amenities, including a swimming pool, Jacuzzi, steam room, sauna, private cinema, and a state-of-the-art gymnasium. The development also boasts a 24-hour concierge service, ensuring a secure and effortless living experience.

Situated in the heart of Goodman's Fields, this apartment is surrounded by an array of conveniences, including the newly opened Curzon Cinema, a stylish pub, Sainsbury's Local, and a trendy coffee shop. The vibrant local area offers a rich selection of dining, shopping, and cultural experiences.



These particulars, whilst believed to be accurate are set out as a general outline only for guidance and do not constitute any part of an offer or contract. Intending purchasers should not rely on them as statements of representation of fact, but must satisfy themselves by inspection or otherwise as to their accuracy. No person in this firm's employment has the authority to make or give any representation or warranty in respect of the property.