

One Linear Place

Nine Elms, SW11 7ER

£830 Per Week



1



1

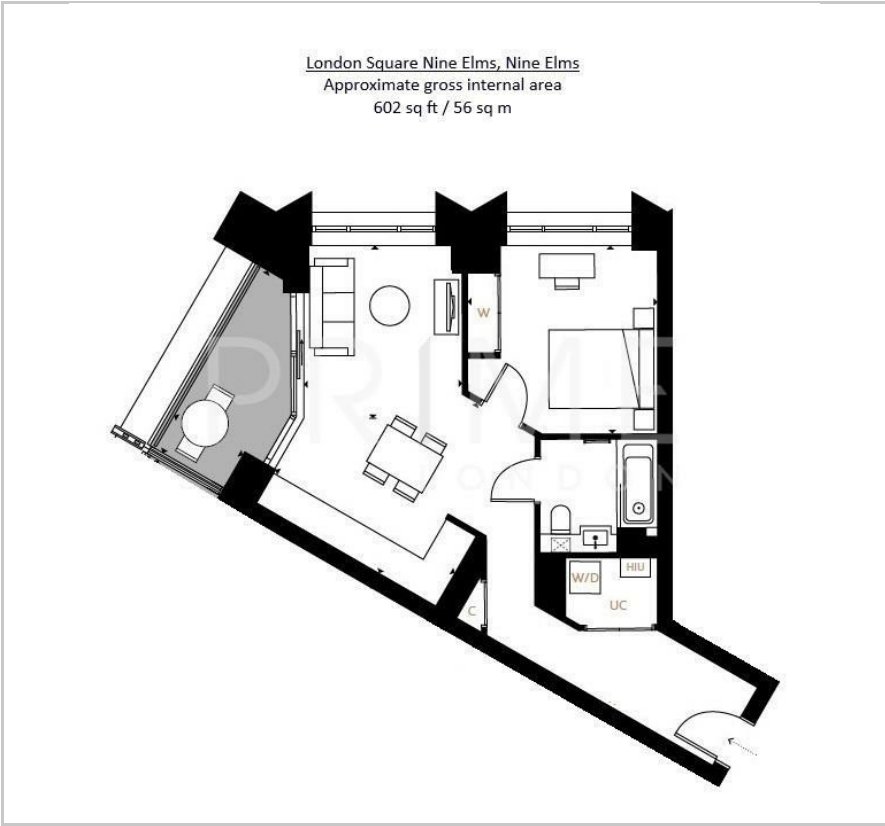


1

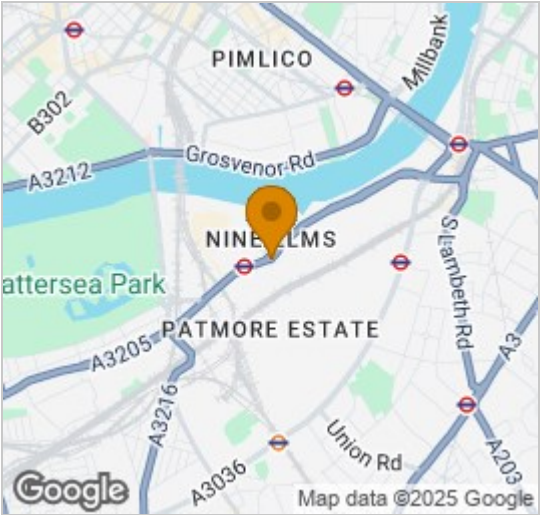


B

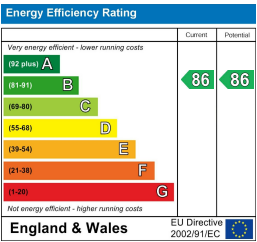
Floor Plan



Area Map



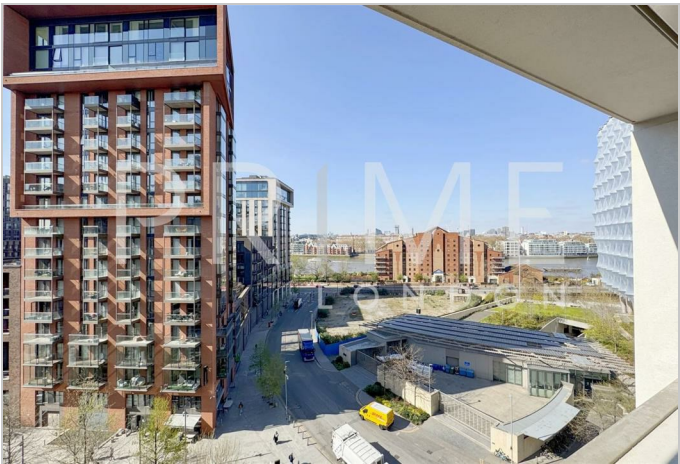
Energy Efficiency Graph



Viewing

By appointment. Contact us on 0207 928 6663 if you wish to arrange a viewing appointment for this property, or require further information.

- Modern apartment
- Balcony with views of River Thames and Embassy
- Residents lounge
- 602 sq ft (56 sqm)
- Underfloor heating throughout
- 24 hour concierge



A brand new, fully furnished one bedroom apartment in One Linear Place, available for first-time occupation from mid-May through Prime London.

Set within a newly completed development of stylish and well-designed apartments, this home offers residents a peaceful setting tucked away from road and rail noise, yet benefits from iconic views of the American Embassy, River Thames, and the city skyline.

Perfectly positioned between Nine Elms, Battersea Power Station, and Vauxhall stations, the property provides excellent access to the London Underground and wider transport network. London Square Nine Elms has been thoughtfully integrated into its surroundings, placing residents right at the heart of beautifully landscaped parkland.



These particulars, whilst believed to be accurate are set out as a general outline only for guidance and do not constitute any part of an offer or contract. Intending purchasers should not rely on them as statements of representation of fact, but must satisfy themselves by inspection or otherwise as to their accuracy. No person in this firms employment has the authority to make or give any representation or warranty in respect of the property.