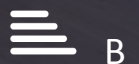




## Brent House

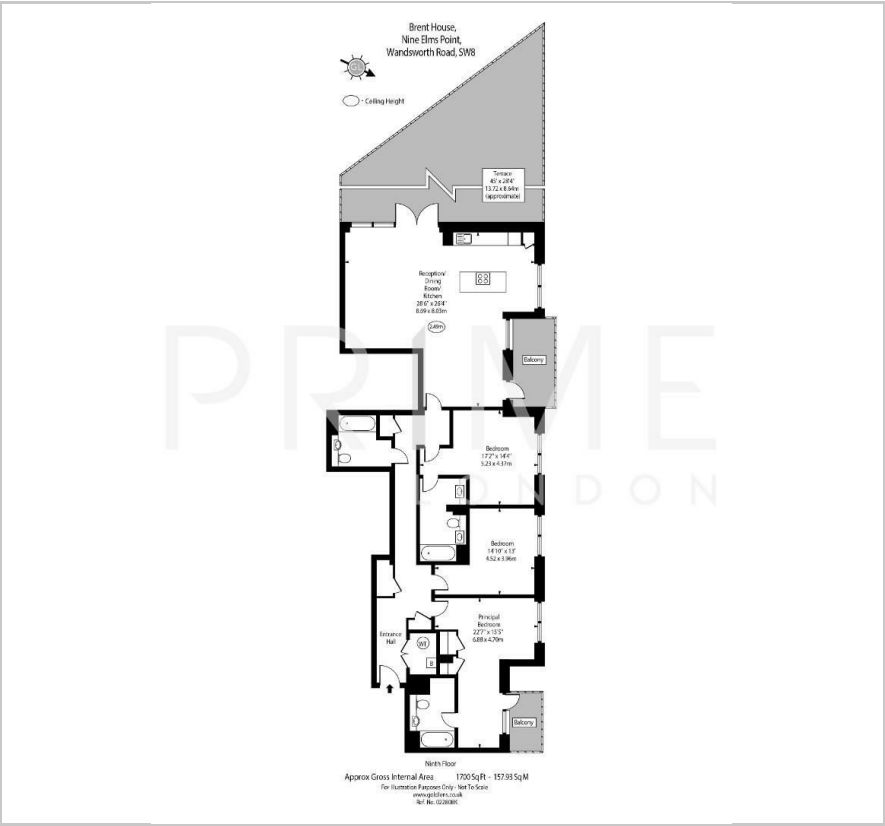
50 Wandsworth Road, Nine Elms Point, SW8 2FL

Asking Price £1,850,000

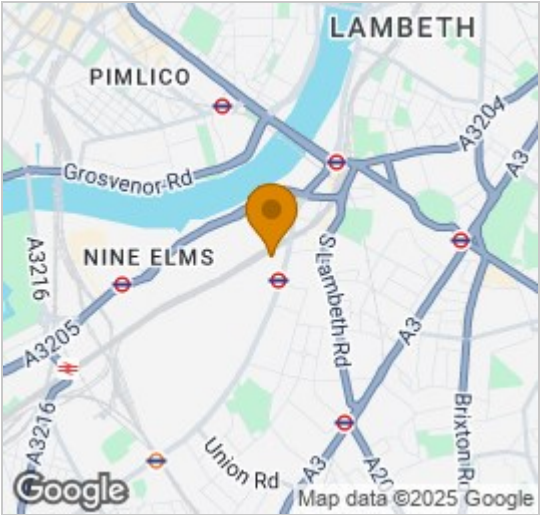




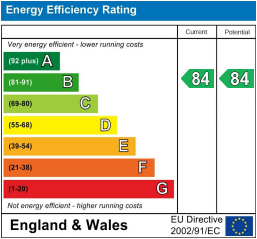
Floor Plan



Area Map



Energy Efficiency Graph



Viewing

By appointment. Contact us on 0207 928 6663 if you wish to arrange a viewing appointment for this property, or require further information.

- Three bedroom penthouse
- Underground car parking
- 1700 sq ft (157.93 sqm)
- Chain free
- Luxuriously furnished
- Expansive private terrace
- 24 hour concierge and fitness suite
- Excellent transport links

An exceptional three-bedroom lateral penthouse in Brent House, Nine Elms Point, available exclusively through Prime London. Offered chain-free and available turnkey with all furniture included, the property also comes with secure underground parking and a dedicated storage unit (approx. 8 sqm).

Spanning 1,700 sq ft (157.93 sq m), the apartment features a spacious open-plan living, kitchen, and dining area with high-spec AEG appliances and a large kitchen island. A standout feature is the 45 ft private south-west-facing terrace, ideal for entertaining or relaxing.

There are three large double bedrooms, two with en-suites, and a separate family/guest bathroom. All bedrooms are beautifully finished and move-in ready.

Residents benefit from 24-hour concierge, a fitness suite, landscaped gardens, and direct access to an 80,000 sq ft flagship Sainsbury's. Nine Elms (Northern Line) is on the doorstep, with Vauxhall Station just a short walk away.

A rare opportunity to own a high-spec, fully furnished penthouse in one of London's most dynamic developments.



These particulars, whilst believed to be accurate are set out as a general outline only for guidance and do not constitute any part of an offer or contract. Intending purchasers should not rely on them as statements of representation of fact, but must satisfy themselves by inspection or otherwise as to their accuracy. No person in this firm's employment has the authority to make or give any representation or warranty in respect of the property.