

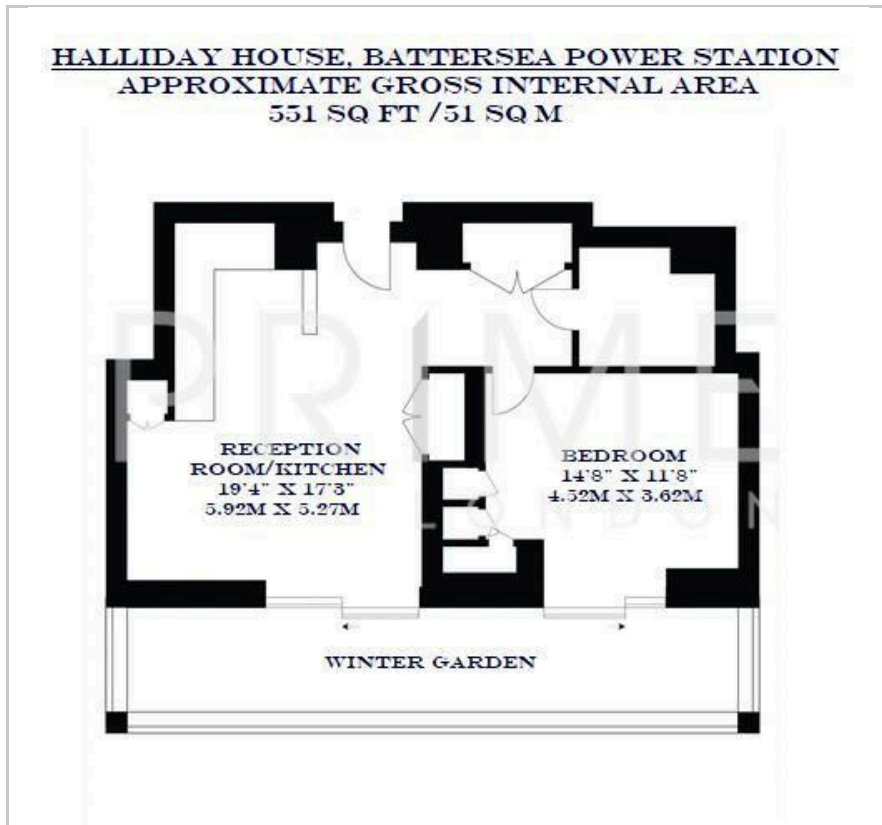
## Halliday House

Battersea Power Station, SW11 8EY

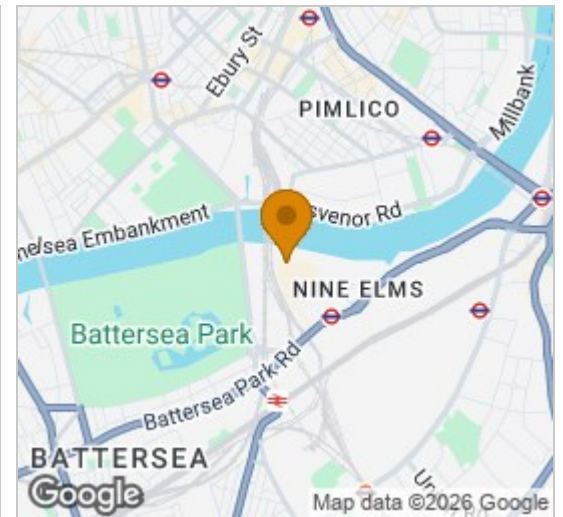
£762 Per Week



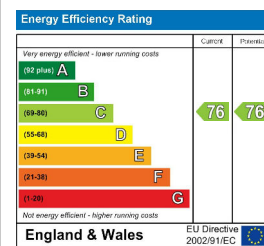
## Floor Plan



## Area Map



## Energy Efficiency Graph



## Viewing

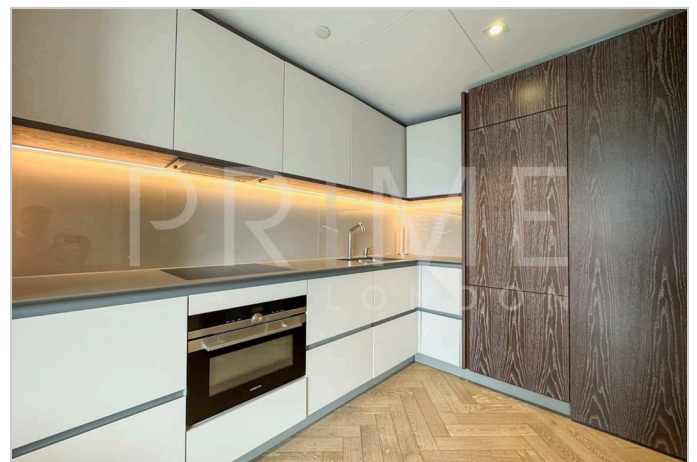
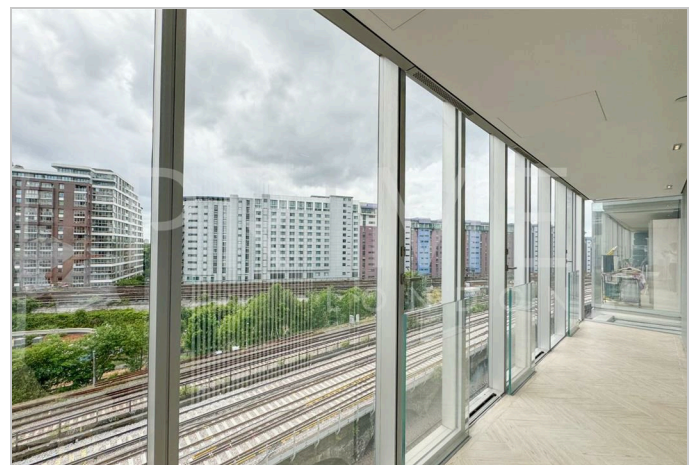
By appointment. Contact us on 0207 928 6663 if you wish to arrange a viewing appointment for this property, or require further information.

- Fully furnished
- One bedroom apartment
- 551 sq ft (51 sqm)
- 24 hour concierge
- Residents' cinema, games room, meeting room
- Residents' gym, swimming pool and spa

This well-presented and modern one bedroom apartment 551 sq ft (51 sqm) within the Battersea Power Station development, next to the River Thames, Battersea Park and the newest Northern Line underground station, is available to rent through Prime London.

Beautifully presented and maintained to an exceptional standard, this modern apartment features a bright reception room with access to a private winter garden, a sleek open plan kitchen with integrated appliances, a generously sized double bedroom with built in wardrobes, and a contemporary bathroom.

Resident facilities include a first class 24 hour concierge, on-site gym, swimming pool and spa, cinema, games room, meeting room and all day restaurant. Located next to the River Thames, this luxury apartment is ideally located for Chelsea, Battersea Park and the tube and rail stations nearby.



These particulars, whilst believed to be accurate are set out as a general outline only for guidance and do not constitute any part of an offer or contract. Intending purchasers should not rely on them as statements of representation of fact, but must satisfy themselves by inspection or otherwise as to their accuracy. No person in this firm's employment has the authority to make or give any representation or warranty in respect of the property.