



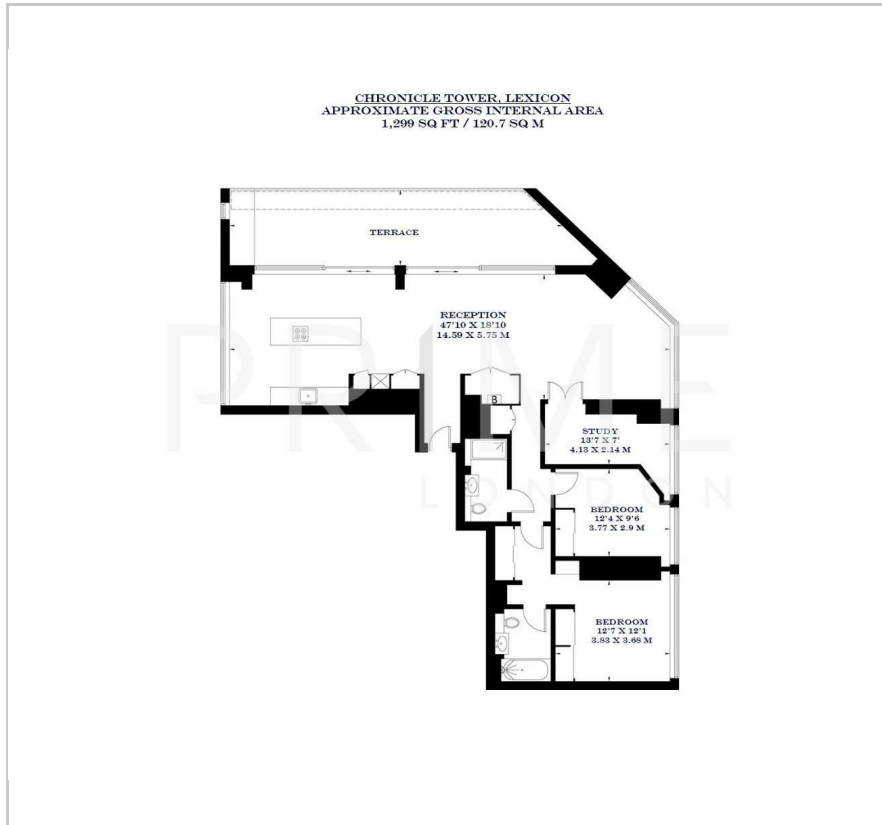
Chronicle Tower

Lexicon, 261B City Road, EC1V 1AL

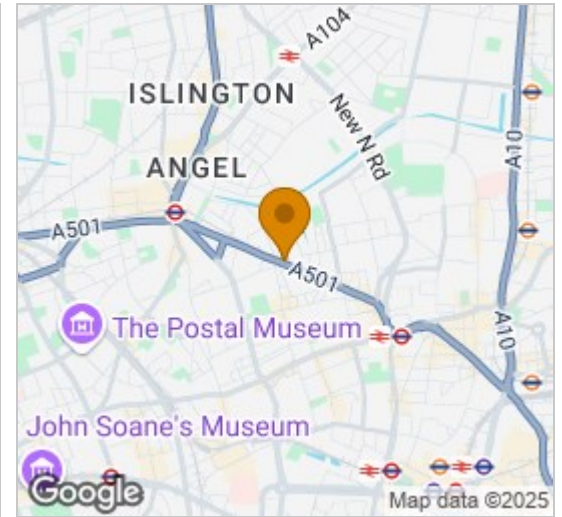
£1,500 Per Week



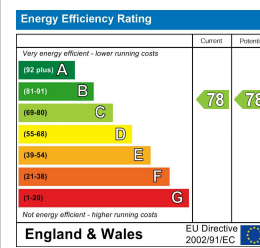
Floor Plan



Area Map



Energy Efficiency Graph



Viewing

By appointment. Contact us on 0207 052 1075 if you wish to arrange a viewing appointment for this property, or require further information.

- Two bedroom (plus study) ■ 1,299 sq ft (120.7 sqm) apartment
- Roof terrace with skyline ■ Residents' gym, spa, and pool views
- Ideally located between ■ 24 hour concierge Shoreditch and Angel



This expansive two bedroom (plus study) penthouse apartment, located in the Lexicon development in The City, is available for lease through Prime London.

Offering over 1,299 sq ft (120.7 sqm) of internal space, the property features a generous open plan kitchen and reception area. There are two proportionally sized double bedrooms, one with an en-suite bathroom. The property features an additional study/office space.

The property features a generous rooftop terrace, offering unparalleled views of London's skyline, as well as underfloor heating and a comfort cooling system for year-round comfort.

Residents have access to a range of premium amenities, including a spa, sauna, swimming pool, gym, and business lounge. A 24-hour concierge service ensures convenience and security.

Located just moments from Angel and Old Street stations, the property offers excellent transport links. Enjoy the vibrant lifestyle of nearby Shoreditch and Upper Street, with their array of shopping, dining, and entertainment options.

For transportation, Angel underground station is located 0.4 miles away.



These particulars, whilst believed to be accurate are set out as a general outline only for guidance and do not constitute any part of an offer or contract. Intending purchasers should not rely on them as statements of representation of fact, but must satisfy themselves by inspection or otherwise as to their accuracy. No person in this firm's employment has the authority to make or give any representation or warranty in respect of the property.