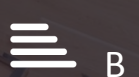
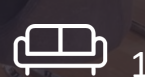




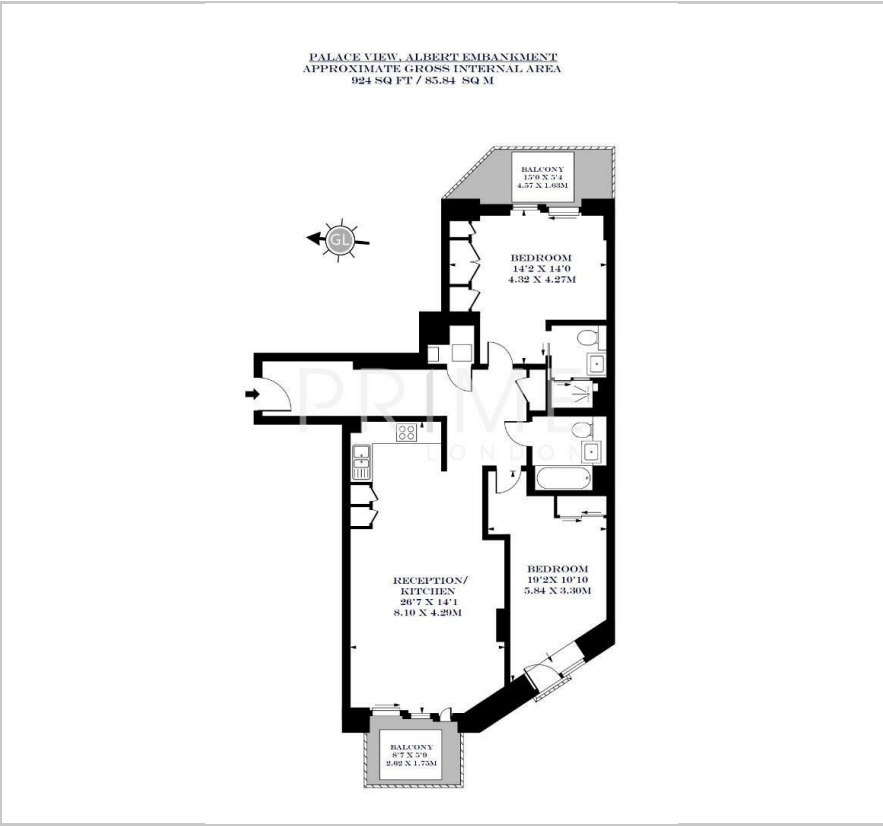
Palace View

1 Lambeth High Street, Albert Embankment, SE1 7AH

Asking Price £915,000



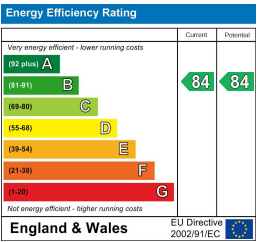
Floor Plan



Area Map



Energy Efficiency Graph



Viewing

By appointment. Contact us on 0207 928 6663 if you wish to arrange a viewing appointment for this property, or require further information.

- Modern two bedroom 924 sq ft / 85.84 sq m apartment with comfort cooling
- Two private balconies
- Residents' gym and cinema room
- Expansive residents only roof 24 hour Concierge service terrace



Available turnkey and chain-free, this rare front-to-back, high-specification two-bedroom apartment—with two private balconies and a peaceful outlook—is ideally positioned within the prestigious boutique Palace View development. Exclusively offered for sale through Prime London.

Generously proportioned at 924 sq ft (85.84 sq m), the apartment offers a bright open-plan reception, a sleek, fully fitted kitchen with integrated appliances and a dedicated dining area, and two private balconies offering partial views of the River Thames. Uniquely, both double bedrooms feature bespoke built-in storage, and the property includes two luxurious bathrooms, one of which is en suite. Additional highlights include premium wooden flooring throughout and integrated comfort cooling.

Palace View delivers a boutique, intimate living experience with exceptional resident amenities, including a panoramic rooftop terrace showcasing views of the River Thames, Houses of Parliament, and the London Eye, along with a private gym, cinema room, and 24-hour concierge service.

Ideally located less than 50 metres from the River Thames and just 0.5 miles from Westminster Bridge, this home sits at the gateway to London's iconic Southbank, with its vibrant cultural and culinary scene.



These particulars, whilst believed to be accurate are set out as a general outline only for guidance and do not constitute any part of an offer or contract. Intending purchasers should not rely on them as statements of representation of fact, but must satisfy themselves by inspection or otherwise as to their accuracy. No person in this firm's employment has the authority to make or give any representation or warranty in respect of the property.