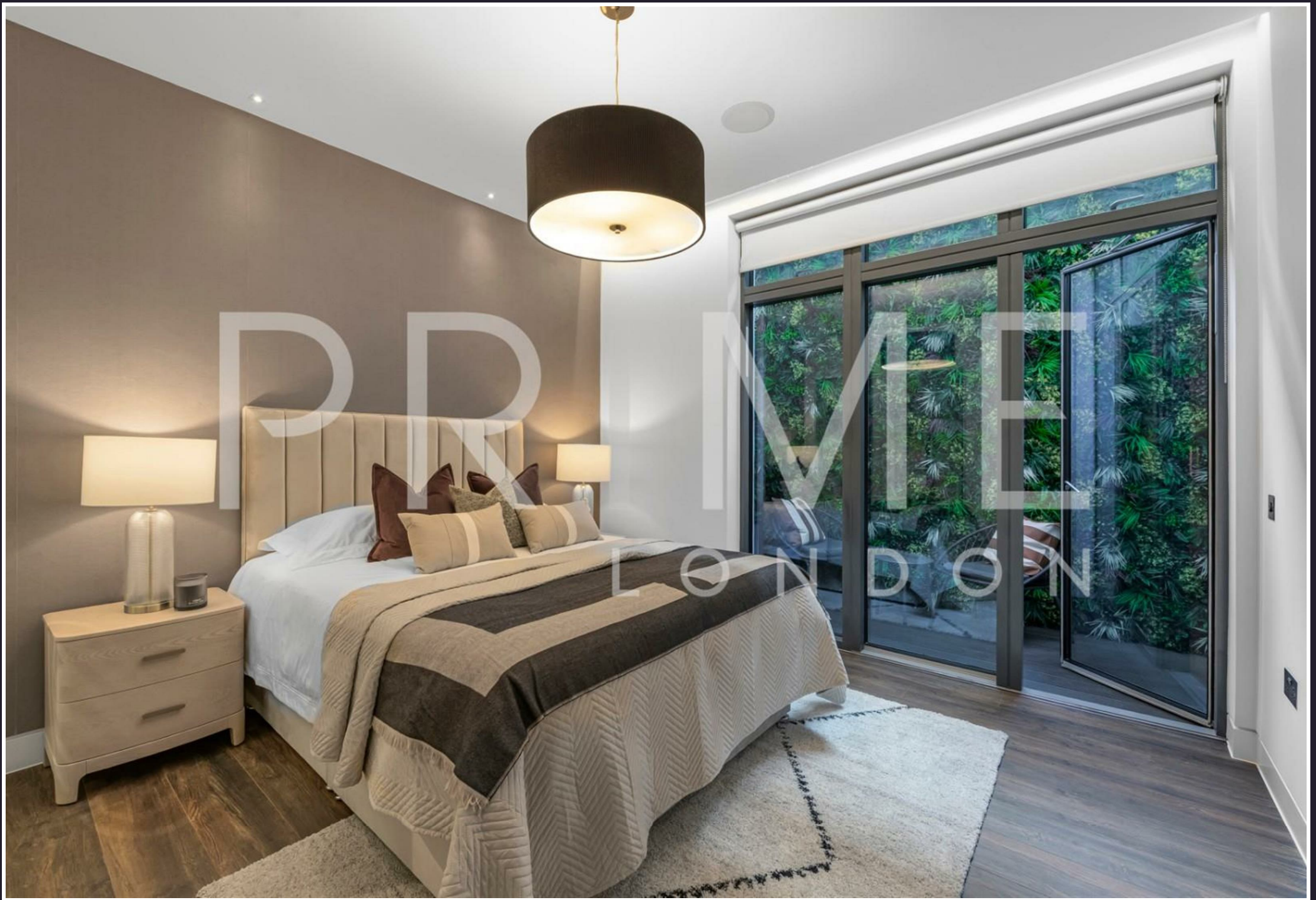




The Hop House, Covent Garden, WC2N 4BN

£1,750,000





£1,750,000

The Hop House

Covent Garden, WC2N 4BN

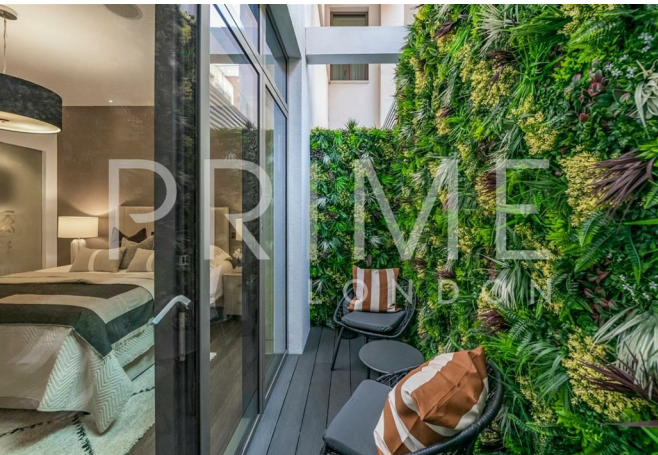
- Two Bedroom Apartment
- 985 Year Lease
- Portered Building
- Additional Study
- Three Bathrooms
- Moments away from Leicester Square and Covent Garden

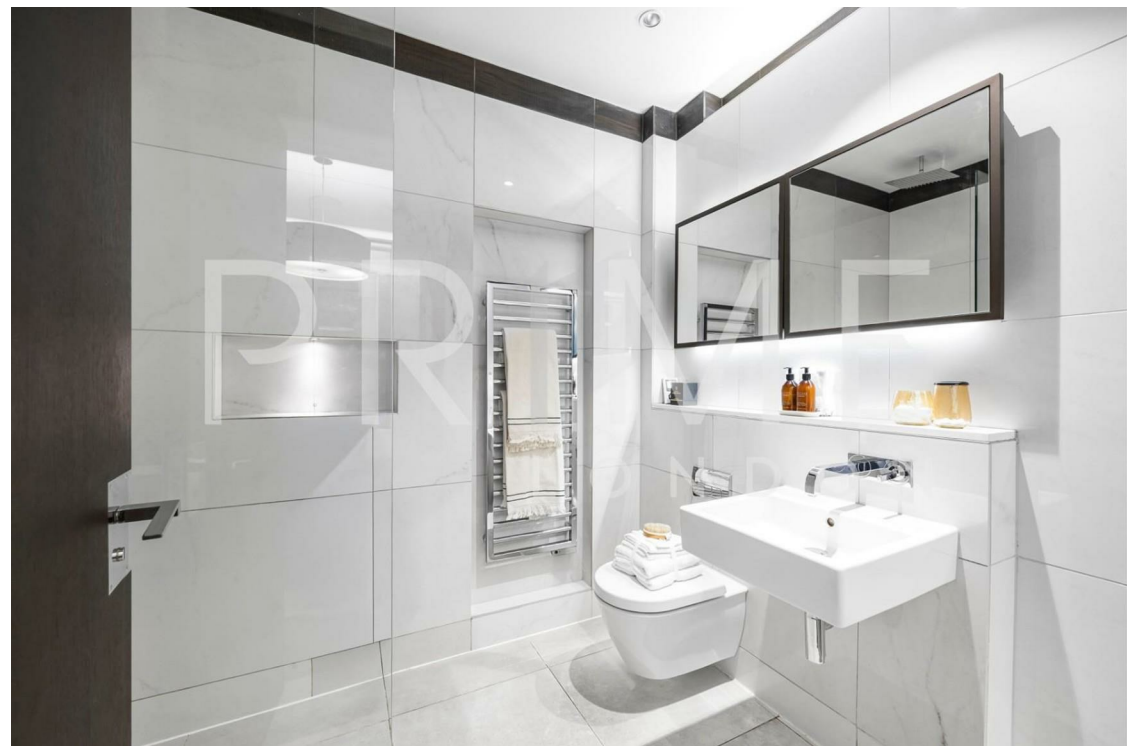
This beautifully refurbished two bedroom apartment (with an additional study) offers a rare combination of quiet comfort and vibrant city living. A peaceful retreat just moments from the buzzing energy of Covent Garden and Leicester Square, the home provides a sense of calm in the heart of London's cultural and entertainment hub.

The apartment has been interior designed and furnished with luxurious, high-quality pieces throughout. From bespoke finishes to carefully curated furniture, every detail has been considered to create a stylish and sophisticated living space.

Ideally located within walking distance of Charing Cross, Covent Garden, and Leicester Square stations, the apartment is exceptionally well-connected and perfectly placed for enjoying the best of London.

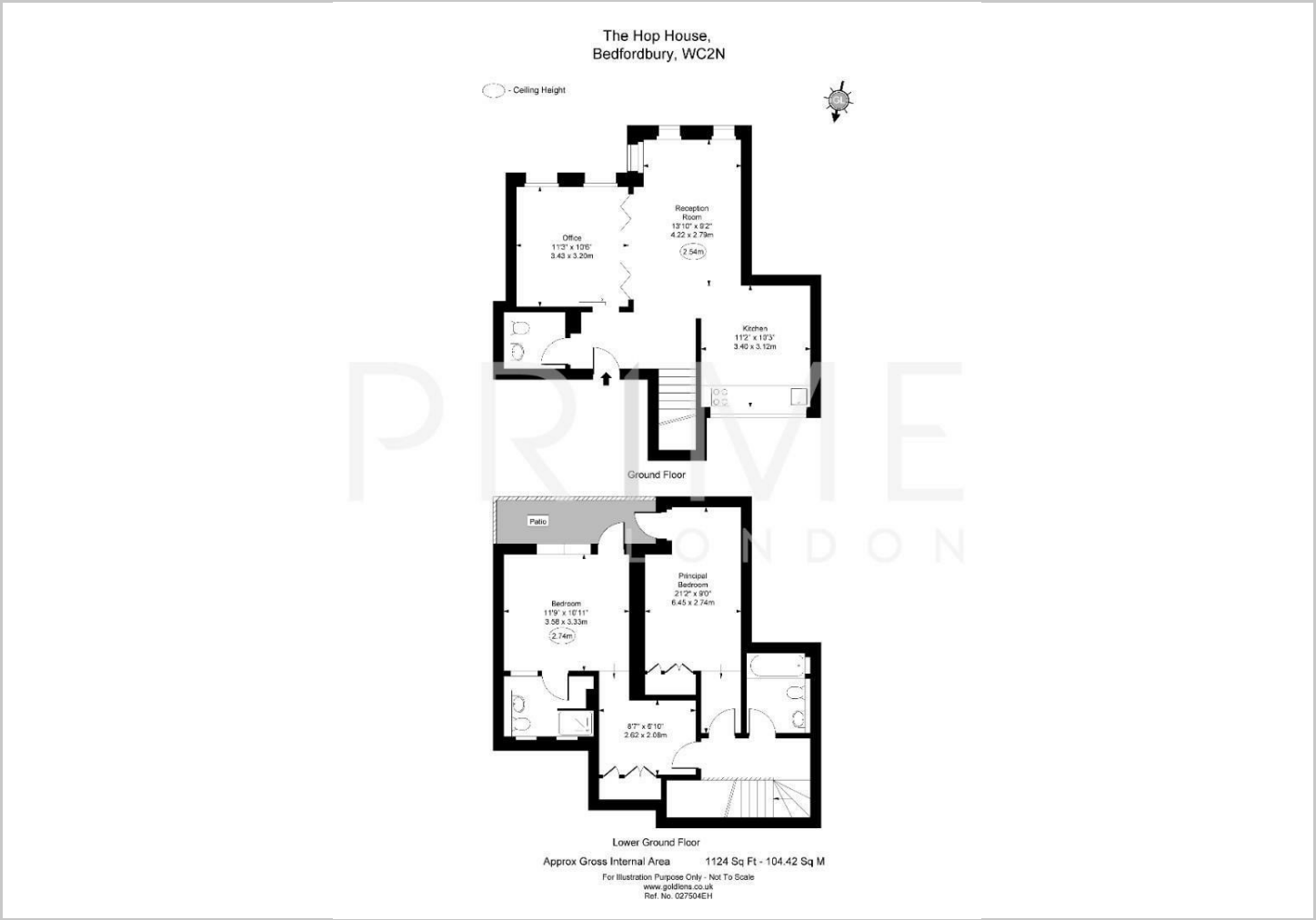
With a long lease of over 985 years, this property is a secure and desirable investment—whether as a refined pied-à-terre or a central London home.







Floor Plans

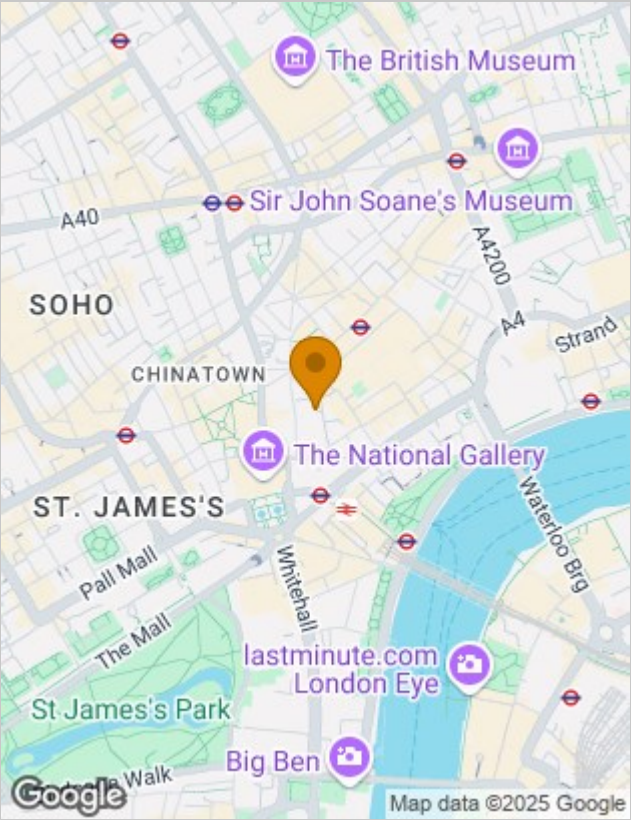


Viewing

By appointment. Contact us if you wish to arrange a viewing appointment for this property, or require further information.

The particulars are set out as a general outline only for the guidance of intended purchasers or lessees, and do not constitute, any part of a contract. Nothing in these particulars shall be deemed to be a statement that the property is in good structural condition or otherwise nor that any of the services, appliances, equipment or facilities are in good working order. Purchasers should satisfy themselves of this prior to purchasing.

Location Map



Energy Performance Graph

